



**TAP WATER SAMPLING FOR LEAD AND COPPER ANALYSIS  
Select NJARNG Facilities  
Round 3 Results  
Calendar Year 2019**



Prepared for:

New Jersey Department of Military and Veterans Affairs  
101 Eggert Crossing Road, Lawrenceville, NJ 08625-0340

And

New Jersey Army National Guard  
CFMO  
101 Eggert Crossing Road, Lawrenceville, NJ 08625-0340

Prepared by:

Stockton University Environmental Internship Program



Intern Advisor: John Hallagan  
Interns: Nicholas Cordivari, Nicholas Gamarro, Alexandria Petrosch, Gregory Fischer, Ethan Freeman,  
Danielle Napier, Emily Gilligan

**Table of Contents**

Acronym List.....1

Definitions.....1

Introduction.....2

    Round 1 Summary.....2

    Round 2 Summary.....2

    Round 3 Summary.....3

Methods.....3

Known Faucets of Concern (FOC).....4

Round 3 Site- Specific Results and Recommended Action Plans.....5

    Atlantic City Armory.....5

    Dover Armory.....6

    Hackettstown Armory.....6

    Lawrenceville FMS.....7

    Newark Armory.....7

    Somerset Armory.....8

    Teaneck Armory.....8

    Westfield Armory and FMS.....9

    Woodbridge Armory.....9

    Woodstown Armory.....10

## **Acronym List**

AL - Action Level  
ARNG - Army National Guard  
B (floor) - Basement  
Bldg - Building  
CFMO - Construction and Facilities Management Office  
CFR - Code of Federal Regulations  
COC - Chain of Custody  
Cu - Copper  
EMB - Environmental Management Bureau  
EPA - Environmental Protection Agency  
FMS - Field Maintenance Shop  
FOC – Faucet of Concern  
ID - Identification  
min - Minute  
mL - Milliliter  
N/A - Not Available  
NJARNG - New Jersey Army National Guard  
NJDMAVA - New Jersey Department of Military and Veterans Affairs  
NJSDWA - New Jersey Safe Drinking Water Act  
Pb - Lead  
POE – Point of Entry  
ppm - Parts per Million  
QA - Quality Assurance  
SOP - Standard Operating Procedure  
SUEIP - Stockton University Environmental Internship Program

## **Definitions**

Action Level: The level of lead or copper which, if exceeded, triggers treatment or other requirements that a water system must follow.

Below Detection: Concentrations of Pb and Cu lower than the analytical detection limits of the laboratory equipment. The detection limit for Pb is 0.002 mg/L. The detection limit for Cu is 0.04 mg/L.

Faucet: For the purposes of this report, the term "Faucet" will be used to describe any fixture where water can be accessed, including water fountains and spigots.

Faucet ID: A unique label given to each faucet sampled. This ID was generated using a 12-digit random number generator consisting of numbers and uppercase letters. A Faucet Identification Table with faucet descriptions can be found in Appendix A.

Faucet of Concern: A faucet that has produced results exceeding the Pb or Cu AL during previous sampling rounds.

Point of Entry: The location where city water enters a building.

Sample ID: A unique label given to each sample collected.

## Introduction

At each New Jersey Army National Guard facility, drinking water is made available for soldiers and on-site working civilians by providing sinks and drinking-water-fountain systems. Under the NJARNG's Water Quality Management section of the Environmental Compliance Desktop Guide, facilities must comply with all state and federal regulations and requirements to ensure that each site has available and protected drinking water systems. Regulations include the Federal Safe Drinking Water Act (SDWA) and the State of New Jersey Safe Drinking Water Act (NJSDWA). These acts establish the standards for NJARNG's drinking water and protect the integrity of each system through proper construction and operation of all facility water systems.

A priority for Water Quality Management at NJARNG facilities is to monitor the concentrations of lead (Pb) and copper (Cu) in drinking water. Routine water sampling is conducted to analyze the Pb and Cu concentrations for water systems, specifically water fountains, breakroom sinks, and kitchen sinks. Common sources of Pb and Cu in drinking water include old Pb and Cu pipes and solder. These toxic elements can pose a significant risk to human health after excessive exposure. Pb and Cu are known to bioaccumulate over many years and can cause damage to the brain, red blood cells, and kidneys. Young children and pregnant woman are at an increased risk as these contaminants can negatively impact mental and physical development. According to standards set by the EPA, the exposure levels of Pb and Cu that warrant remedial action (action level) are Pb concentrations in exceedance of 0.015 mg/L or Cu concentrations in exceedance of 1.3 mg/L.

## Round 1 Summary

In the winter and spring of 2018, 101 faucets at 29 NJARNG sites were sampled by the Stockton University Environmental Internship Program (SUEIP) team in collaboration with the New Jersey Department of Military and Veterans Affairs Environmental Management Bureau (NJ DMAVA EMB). This first round of water sampling identified 14 faucets at 12 different sites with Pb or Cu concentrations equal to or exceeding the AL standards set by the EPA SDWA. A Quality Assurance (QA) round of water sampling was conducted in May and June of 2018, during which 10 of the 14 contaminated faucets identified in round 1 were re-tested. Five of the 10 faucets sampled during the QA Round continued to produce results exceeding the Pb or Cu AL. Detailed methods, results, and action plans from round 1 and the QA round can be found in an earlier report titled "Tap Water Sampling for Lead and Copper Analysis, Select NJARNG Facilities, Round 1 and Quality Assurance Results, Calendar Year 2018."

## Round 2 Summary

A second round of water sampling was conducted in the summer of 2018 to identify the source of the Pb or Cu contamination for the 14 faucets at 12 facilities with exceedances in round 1. These facilities include the Atlantic City Armory, Dover Armory, Hackettstown Armory, Lawrenceville FMS, Trenton-Mercer Aviation Facility, Newark Armory, Sea Girt Museum, Somerset Armory, Teaneck Armory, Westfield Armory and FMS, Woodbridge Armory, and Woodstown Armory. In an effort to identify the source of contamination for each FOC (faucet of concern), samples were collected from the FOC as well as other faucets within the building. Facility armorers were consulted to identify the location where the main water line enters the building (water point of entry (POE)). Samples were collected from the faucet or spigot closest to the POE to confirm that water entering the building did not exceed the Pb or Cu AL. In some

cases, the FOC was the faucet closest to the POE, in which case, a sample was collected from the nearest downstream faucet. In total, 59 samples from 30 faucets at 12 different facilities were collected, resulting in 11 exceedances. Results and recommended action plans from this round of sampling are summarized in the report titled “Tap Water Sampling for Lead and Copper Analysis, Select NJARNG Facilities, Round 2, Calendar Year 2018”.

### Round 3 Summary

In response to the round 1 and 2 sampling results, new bottle filling stations were installed at 10 facilities. In total, 53 samples from 24 faucets at all 10 facilities were collected during round 3. These facilities include the Atlantic City Armory, Dover Armory, Hackettstown Armory, Lawrenceville FMS, Newark Armory, Somerset Armory, Teaneck Armory, Westfield Armory and FMS, Woodbridge Armory, and Woodstown Armory. Sampling was not conducted at the Sea Girt NGTC or the Trenton-Mercer facilities because new faucets were not installed at these locations following the 2<sup>nd</sup> round of water sampling. Of the 24 faucets sampled, 1 water fountain, 1 kitchen sink, and 1 boiler room spigot produced results exceeding the AL for Pb and/or Cu. Detailed site-specific results and recommended action plans are included below. Appendix A contains a list of all faucets sampled during all 3 rounds. A complete list of all results from all 3 rounds can be found in Appendix B. Photographs of all round 3 sample locations are included in Appendix C.

## Methods

### Draw 1 Methods

1. A 1L wide-mouthed sample bottle was placed below the faucet.
2. The cold water tap was opened to fill the bottle, with a flow rate similar to filling a glass of water.
3. The sample bottle was tightly capped and labeled.
4. Sample collection data was recorded on the Water Sample Collection Form and COC Form. An example of these forms can be found in Appendix D.

### Draw 2 Methods

1. The cold water was flushed for several minutes until the sampler could feel a significant change in the water temperature, indicating that new water was entering the building. Flush times were recorded on the Water Sample Collection form.
2. After flushing, a second sample was collected by placing an opened bottle under the flowing water.
3. The sample bottle was tightly capped and labeled.
4. Sample collection data was recorded on the Water Sample Collection Form and COC Form.
5. Samples were transported to J.R. Henderson Labs in Beechwood, NJ for analysis within 14 days of collection. Data from the Water Sample Collection Form and lab results were entered into a database, and proofed for accuracy.
6. Survey results were communicated to EMB staff, Facilities staff, and the on-site armorers.

## **Known Faucets of Concern – From Rounds 1 and 2**

### Atlantic City Armory

FOC - The 1<sup>st</sup> floor kitchen sink by the gymnasium (JUW0W7MN6GRN) had elevated Pb concentrations during round 1 and the QA round of sampling, but was below the AL during round 2. This faucet was not sampled during round 3.

### Dover Armory

FOC – Pb concentrations for the lower level kitchen sink (V5PT95H3E739) were above the AL during round 1 and 2 sampling. This faucet was not sampled during round 3. Pb concentrations for the 2<sup>nd</sup> floor water fountain (C66DJ6TQW5W0) were just below the AL at 0.014 mg/L during round 1. This faucet was not sampled during round 2, and was replaced in summer, 2019 by a new bottle filling station (MXYFZINOMDFC).

### Hackettstown Armory

FOC – Pb concentrations for one of the kitchen sinks (758GWT8406MA) were above the AL during round 1, but were below the AL during the QA and 2<sup>nd</sup> rounds of sampling. This faucet was not sampled during round 3.

### Lawrenceville FMS

FOC – Pb concentrations for the FMS breakroom sink (IOFQA7QL25X2) were above the AL during round 1, but were below the AL during the QA and 2<sup>nd</sup> round of sampling. Pb concentrations for the FMS spigot (L5CD170VA37M) were also above AL during round 2. These faucets were not sampled during the round 3.

### Newark Armory

FOC – Pb concentrations for the breakroom sink (IORBRPRVR102) were above the AL during round 1, below the AL during the QA round, and above the AL during round 2. This faucet was not sampled during round 3.

### Somerset Armory

FOC – Pb concentrations for a kitchen sink (39RS3F3TIVXM) were above the AL during round 1 and the QA round, but below the AL during round 2. The bar sink (1RFJROM7QORH) was not tested during round 1, but contained Pb concentrations above the AL during round 2. Neither of these faucets were sampled during round 3.

### Teaneck Armory

FOC – Pb concentrations for a basement sink (L4A2L7C5B2B4) were above the AL during round 1, but below the AL during the QA round and round 2. This faucet was not sampled during round 3.

### Westfield Armory

FOC – Pb and Cu concentrations were above the AL for a bar sink in the basement (A90F16RP25HQ), but were below the AL for both contaminants during round 2. Pb and Cu concentrations were above the AL for a boiler room spigot (HI8A48C6P1A5) during round 2. Neither of these faucets were sampled during round 3.

## Westfield FMS

FOC – Cu concentrations for a sink by the water fountain and washer (DBMZHS6P6AA) were above the AL during round 1, but below the AL during round 2. This faucet was not sampled during round 3.

## Woodbridge Armory

FOC – Pb concentrations for a water fountain (S8T11IS3V2LX) and a kitchen sink (V89GI2FCKBZI) were above the AL during round 1. The water fountain was below the AL during the QA round and round 2. Pb concentrations from the kitchen sink continued to exceed the AL during the QA round and round 2. These faucets were not sampled during round 3.

## Woodstown Armory

FOC – Pb concentrations for a kitchen sink (LU62FCJZAJLM) exceeded the AL during round 1, the QA round, and round 2. This faucet also exceeded the Cu AL during round 2. Pb concentrations for the boiler room main spigot (MFPFT8IA2W82) exceeded the AL during round 2. Both of these faucets were sampled during round 3.

## **Round 3 Site-Specific Results and Recommended Action Plans**

### **Atlantic City Armory**

#### Background

New bottle filling stations were installed in 3 locations in the Atlantic City Armory in summer, 2019. Surveyors sampled all 3 new bottle filling stations on 6/4/2019. Figures AC1 and AC2 display the location of these faucets.

#### Results

Pb and Cu levels from faucets 4JGYFSHKL88E (1<sup>st</sup> floor hallway fountain) and PFSI82N17ZW1 (gymnasium water fountain) were below detection for both draws. Pb and Cu levels from faucet 73100D0XTKUA (2<sup>nd</sup> floor hallway fountain) were below detection for draw 1, however Pb levels were elevated (0.015 mg/L) for draw 2. In response to these elevated Pb levels, it was recommended that the fountain filter be changed, and the faucet be resampled. Follow-up sampling was conducted on 8/27/2019. Pb and Cu levels for these follow-up samples were below detection for both draws.

Round #	Site	Building	Collection Date	Collection Time (24 hr clock)	Floor #	Faucet Description	Faucet ID	Sample ID (As Written On COC Form)	Draw	Flush Time (min)	Faucet Usage (Daily, Weekly, Monthly)	Analysis Date	Lead Action Level (mg/L)	Lead Results (mg/L)	Copper Action Level (mg/L)	Copper Results (mg/L)
3	Atlantic City	Armory	6/4/2019	8:11	1	New Water Fountain - 1st floor hallway	4JGYFSHKL88E	AY-6-4-19-3A	1	0	Daily	6/7/2019	0.015	<0.002	1.3	<0.04
3	Atlantic City	Armory	6/4/2019	8:16	1	New Water Fountain - 1st floor hallway	4JGYFSHKL88E	AY-6-4-19-3B	2	5	Daily	6/7/2019	0.015	<0.002	1.3	<0.04
3	Atlantic City	Armory	6/4/2019	8:17	1	New Water Fountain - gymnasium	PFSI82N17ZW1	AY-6-4-19-4A	1	0	Daily	6/7/2019	0.015	<0.002	1.3	<0.04
3	Atlantic City	Armory	6/4/2019	8:22	1	New Water Fountain - gymnasium	PFSI82N17ZW1	AY-6-4-19-4B	2	5	Daily	6/7/2019	0.015	<0.002	1.3	<0.04
3	Atlantic City	Armory	6/4/2019	8:32	2	New Water Fountain - 2nd floor hallway	73100D0XTKUA	AY-6-4-19-5A	1	0	Daily	6/7/2019	0.015	<0.002	1.3	<0.04
3	Atlantic City	Armory	6/4/2019	8:37	2	New Water Fountain - 2nd floor hallway	73100D0XTKUA	AY-6-4-19-5B	2	5	Daily	6/7/2019	0.015	0.015	1.3	<0.04

**Recommended Action Plans**

- Change the filter on all 3 fountains regularly every 3,000 gal or 1 year after installation in accordance with manufacturer recommendations. Estimated cost: \$339 (\$113 each) annually.

**Dover Armory**

**Background**

New bottle filling stations were installed in 2 locations in the Dover Armory in summer, 2019; 1 on 1<sup>st</sup> floor on the drill floor and 1 on the 2<sup>nd</sup> floor at the top of the stairs. The 2<sup>nd</sup> floor bottle filling station replaced an older water fountain (faucet ID C66DJ6TQW5W0), which contained 0.014 mg/L of Pb in round 1. Surveyors sampled both new bottle filling stations on 8/28/2019. Figures DR1 and DR2 display the location of these faucets.

**Results**

Pb and Cu levels from faucets DTXUNDFG97LM (drill floor bottle filling station) and MXYFZINOMDFC (2<sup>ND</sup> floor bottle filling station at top of stairs) were below detection for both draws. No exceedances were detected at this facility during round 3 of sampling.

Round #	Site	Building	Collection Date	Collection Time (24 hr clock)	Floor #	Faucet Description	Faucet ID	Sample ID (As Written On COC Form)	Draw	Flush Time (min)	Faucet Usage (Daily, Weekly, Monthly)	Lead Action Level (mg/L)	Lead Results (mg/L)	Copper Action Level (mg/L)	Copper Results (mg/L)
3	Dover	Armory	8/28/2019	9:32	1	Bottle Filling Station Drill Floor	DTXUNDFG97LM	DR-8-28-19-4A	1	0	MONTHLY	0.015	<0.002	1.3	<0.04
3	Dover	Armory	8/28/2019	9:37	1	Bottle Filling Station Drill Floor	DTXUNDFG97LM	DR-8-28-19-4B	2	5	MONTHLY	0.015	<0.002	1.3	<0.04
3	Dover	Armory	8/28/2019	9:43	2	Bottle Filling Station At Top Of Stairs	MXYFZINOMDFC	DR-8-28-19-5A	1	0	MONTHLY	0.015	<0.002	1.3	<0.04
3	Dover	Armory	8/28/2019	9:48	2	Bottle Filling Station At Top Of Stairs	MXYFZINOMDFC	DR-8-28-19-5B	2	5	MONTHLY	0.015	<0.002	1.3	<0.04

**Recommended Action Plans**

- Change the filter on both fountains regularly every 3,000 gal or 1 year after installation in accordance with manufacturer recommendations. Estimated cost: \$226 (\$113 each).

**Hackettstown Armory**

**Background**

New bottle filling stations were installed in 2 locations in the Hackettstown Armory in summer, 2019. Surveyors sampled both new bottle filling stations on 8/13/2019. Figure HACK1 displays the location of these faucets.

**Results**

Pb and Cu levels from faucets DIUP5XE3VKFZ (bottle filling station by men’s bathroom) and WFAQGEDQ9H80 (bottle filling station by kitchen) were below the AL for both draws. No exceedances were detected at this facility during round 3 of sampling.



Round #	Site	Building	Collection Date	Collection Time (24 hr clock)	Floor #	Faucet Description	Faucet ID	Sample ID (As Written On COC Form)	Draw	Flush Time (min)	Faucet Usage (Daily, Weekly, Monthly)	Lead Action Level (mg/L)	Lead Results (mg/L)	Copper Action Level (mg/L)	Copper Results (mg/L)
3	Hackettstown	Armory	8/13/2019	10:05	1	Bottle Filling Station By Mens Room	DIUP5XE3VKFZ	HACK-8-13-19-6A	1	0	WEEKLY	0.015	<0.002	1.3	<0.04
3	Hackettstown	Armory	8/13/2019	10:10	1	Bottle Filling Station By Mens Room	DIUP5XE3VKFZ	HACK-8-13-19-6B	2	5	WEEKLY	0.015	<0.002	1.3	<0.04
3	Hackettstown	Armory	8/13/2019	10:11	1	Bottle Filling Station By Kitchen	WFAQGEDQ9H80	HACK-8-13-19-7A	1	0	MONTHLY	0.015	<0.002	1.3	0.05
3	Hackettstown	Armory	8/13/2019	10:20	1	Bottle Filling Station By Kitchen	WFAQGEDQ9H80	HACK-8-13-19-7B	2	9	MONTHLY	0.015	<0.002	1.3	<0.04

### Recommended Action Plans

- Change the filter on both fountains regularly every 3,000 gal or 1 year after installation in accordance with manufacturer recommendations. Estimated cost: \$226 (\$113 each).

## Lawrenceville FMS

### Background

A new bottle filling station was installed in the Lawrenceville FMS in summer, 2019. Surveyors sampled this new bottle filling station on 6/25/2019. Figure LV1 displays the location of this faucet.

### Results

Pb and Cu levels from faucet 514924F1YI6Z (breakroom water fountain) were below detection for both draws. No exceedances were detected at this facility during round 3 of sampling.

Round #	Site	Building	Collection Date	Collection Time (24 hr clock)	Floor #	Faucet Description	Faucet ID	Sample ID (As Written On COC Form)	Draw	Flush Time (min)	Faucet Usage (Daily, Weekly, Monthly)	Lead Action Level (mg/L)	Lead Results (mg/L)	Copper Action Level (mg/L)	Copper Results (mg/L)
3	Lawrenceville	FMS	6/25/2019	10:12	1	Breakroom Water Fountain	514924F1YI6Z	LVF-6-25-19-4A	1	0	Weekly	0.015	<0.002	1.3	<0.04
3	Lawrenceville	FMS	6/25/2019	10:17	1	Breakroom Water Fountain	514924F1YI6Z	LVF-6-25-19-4B	2	5	Weekly	0.015	<0.002	1.3	<0.04

### Recommended Action Plans

- Change the filter on the FMS breakroom bottle filling station regularly every 3,000 gal or 1 year after installation in accordance with manufacturer recommendations. Estimated cost: \$113

## Newark Armory

### Background

New bottle filling stations were installed in 2 locations in the Newark Armory in summer, 2019. Surveyors sampled both new bottle filling stations on 9/5/2019. Figures NK1 and NK2 display the location of these faucets.

### Results

Pb and Cu levels from faucets N5Z4HZ0M3DZU (1<sup>ST</sup> floor bottle filling station by women's bathroom) and UNHML4XTGJSC (2<sup>nd</sup> floor bottle filling station by bathroom) were below detection for both draws. No exceedances were detected at this facility during round 3 of sampling.

Round #	Site	Building	Collection Date	Collection Time (24 hr clock)	Floor #	Faucet Description	Faucet ID	Sample ID (As Written On COC Form)	Draw	Flush Time (min)	Faucet Usage (Daily, Weekly, Monthly)	Lead Action Level (mg/L)	Lead Results (mg/L)	Copper Action Level (mg/L)	Copper Results (mg/L)
3	Newark	Armory	9/5/2019	10:36	1	Bottle Filling Station By Womens Bathroom	NS24HZ0M3DZU	NK-9-5-19-3A	1	0	RARELY	0.015	<0.002	1.3	<0.04
3	Newark	Armory	9/5/2019	10:41	1	Bottle Filling Station By Womens Bathroom	NS24HZ0M3DZU	NK-9-5-19-3B	2	5	RARELY	0.015	<0.002	1.3	<0.04
3	Newark	Armory	9/5/2019	10:47	2	Bottle Filling Station By Bathroom	UNHML4XTGJSC	NK-9-5-19-4A	1	0	RARELY	0.015	<0.002	1.3	<0.04
3	Newark	Armory	9/5/2019	10:52	2	Bottle Filling Station By Bathroom	UNHML4XTGJSC	NK-9-5-19-4B	2	5	RARELY	0.015	<0.002	1.3	<0.04

### Recommended Action Plans

- Change the filter on both fountains regularly every 3,000 gal or 1 year after installation in accordance with manufacturer recommendations. Estimated cost: \$226 (\$113 each).

### Somerset Armory

#### Background

A new bottle filling station was installed in the Somerset Armory in summer, 2019. Surveyors sampled this new bottle filling station on 8/27/2019. Figures for this location are not available.

#### Results

Pb and Cu levels from faucet ZHTNMP5QE97B (drill floor bottle filling station) were below detection for both draws. No exceedances were detected at this facility during round 3 of sampling.

Round #	Site	Building	Collection Date	Collection Time (24 hr clock)	Floor #	Faucet Description	Faucet ID	Sample ID (As Written On COC Form)	Draw	Flush Time (min)	Faucet Usage (Daily, Weekly, Monthly)	Lead Action Level (mg/L)	Lead Results (mg/L)	Copper Action Level (mg/L)	Copper Results (mg/L)
3	Somerset	Armory	8/27/2019	8:53	1	Bottle Filling Station-Drill Floor	ZHTNMP5QE97B	ST-8-27-19-4A	1	0	DAILY	0.015	<0.002	1.3	<0.04
3	Somerset	Armory	8/27/2019	9:00	1	Bottle Filling Station-Drill Floor	ZHTNMP5QE97B	ST-8-27-19-4B	2	7	DAILY	0.015	<0.002	1.3	<0.04

### Recommended Action Plans

- Change the filter on the drill floor bottle filling station regularly every 3,000 gal or 1 year after installation in accordance with manufacturer recommendations. Estimated cost: \$113

### Teaneck

#### Background

A new bottle filling station was installed in the Teaneck Armory in summer, 2019. Surveyors sampled this new bottle filling station on 9/5/2019. Figure TN1 displays the location of this faucet.

#### Results

Pb and Cu levels from faucet K0U7QI4HGH9B (drill floor bottle filling station) were below detection for both draws. No exceedances were detected at this facility during round 3 of sampling.

Round #	Site	Building	Collection Date	Collection Time (24 hr clock)	Floor #	Faucet Description	Faucet ID	Sample ID (As Written On COC Form)	Draw	Flush Time (min)	Faucet Usage (Daily, Weekly, Monthly)	Lead Action Level (mg/L)	Lead Results (mg/L)	Copper Action Level (mg/L)	Copper Results (mg/L)
3	Teaneck	Armory	9/5/2019	9:36	1	Bottle Filling Station Drill Floor	KOU7Q4HGH9B	TNA-9-5-19-3A	1	0	DAILY	0.015	<0.002	1.3	<0.04
3	Teaneck	Armory	9/5/2019	9:46	1	Bottle Filling Station Drill Floor	KOU7Q4HGH9B	TNA-9-5-19-3B	2	10	DAILY	0.015	<0.002	1.3	<0.04

### Recommended Action Plans

- Change the filter on the drill floor bottle filling station regularly every 3,000 gal or 1 year after installation in accordance with manufacturer recommendations. Estimated cost: \$113

## Westfield Armory and FMS

### Background

New bottle filling stations were installed in 2 location in the Armory and 1 location in the FMS at this facility in the summer, 2019. Surveyors sampled the FMS bottle filling station on 6/26/2019, and sampled the Armory bottle filling stations on 7/17/2019. Figures WD1, WD2, AND WD3 display the location of these faucets.

### Results

Pb and Cu levels from faucets FJYDXCM1JUJ (FMS bottle filling station), 2MZPB1R007NP (armory 1<sup>st</sup> floor hallway bottle filling station), and 0UWF8JT2GX0G (armory 2<sup>nd</sup> floor bottle filling station) were below detection for both draws. No exceedances were detected at this facility during round 3 of sampling.

Round #	Site	Building	Collection Date	Collection Time (24 hr clock)	Floor #	Faucet Description	Faucet ID	Sample ID (As Written On COC Form)	Draw	Flush Time (min)	Faucet Usage (Daily, Weekly, Monthly)	Lead Action Level (mg/L)	Lead Results (mg/L)	Copper Action Level (mg/L)	Copper Results (mg/L)
3	Westfield	FMS	6/26/2019	9:20	1	New Bottle Filling Station	FJYDXCM1JUJ	WD-6-26-19-6A	1	0	Daily	0.015	<0.002	1.3	<0.04
3	Westfield	FMS	6/26/2019	9:25	1	New Bottle Filling Station	FJYDXCM1JUJ	WD-6-26-19-6B	2	5	Daily	0.015	<0.002	1.3	<0.04
3	Westfield	Armory	7/17/2019	9:34	1	Hallway Bottle Filling Station	2MZPB1R007NP	WD-7-17-19-7A	1	0	Daily	0.015	<0.002	1.3	<0.04
3	Westfield	Armory	7/17/2019	9:39	1	Hallway Bottle Filling Station	2MZPB1R007NP	WD-7-17-19-7B	2	5	Daily	0.015	<0.002	1.3	<0.04
3	Westfield	Armory	7/17/2019	9:46	2	2nd Floor Bottle Filling Station	0UWF8JT2GX0G	WD-7-17-19-8A	1	0	Daily	0.015	<0.002	1.3	<0.04
3	Westfield	Armory	7/17/2019	9:51	2	2nd Floor Bottle Filling Station	0UWF8JT2GX0G	WD-7-17-19-8B	2	2*	Daily	0.015	<0.002	1.3	<0.04

### Recommended Action Plans

- Change the filter on the FMS, armory 1<sup>st</sup> floor, and armory 2<sup>nd</sup> floor bottle filling stations regularly every 3,000 gal or 1 year after installation in accordance with manufacturer recommendations. Estimated cost: \$339 (\$113 each).

## Woodbridge

### Background

A new bottle filling station was installed in the Woodbridge Armory in summer, 2019. Surveyors sampled this bottle filling station on 8/15/2019, however there was evidence that this faucet had been used prior to arrival, and therefore did not undergo an 8 hour stagnation period. Sample

bottles were provided to site personnel, and additional samples were collected on the morning of 8/19/2019 after the required 8 hour stagnation period. Figure displays the location of this faucet.

### Results

Pb and Cu levels from faucet YT91QP651LY8 (bottle filling station by women’s bathroom) were below detection for both draws during both survey events. No exceedances were detected at this facility during round 3 of sampling.

Round #	Site	Building	Collection Date	Collection Time (24 hr clock)	Floor #	Faucet Description	Faucet ID	Sample ID (As Written On COC Form)	Draw	Flush Time (min)	Faucet Usage (Daily, Weekly, Monthly)	Lead Action Level (mg/L)	Lead Results (mg/L)	Copper Action Level (mg/L)	Copper Results (mg/L)
3	Woodbridge	Armory	8/15/2019	9:48	1	Bottle Filling Station By Womens Bathroom	YT91QP651LY8	WBE-8-15-19-SA	1	0	DAILY	0.015	<0.002	1.3	<0.04
3	Woodbridge	Armory	8/15/2019	9:53	1	Bottle Filling Station By Womens Bathroom	YT91QP651LY8	WBE-8-15-19-SB	2	5	DAILY	0.015	<0.002	1.3	<0.04

### Recommended Action Plans

- Change the filter on the bottle filling station regularly every 3,000 gal or 1 year after installation in accordance with manufacturer recommendations. Estimated cost: \$113

## Woodstown

### Background

A new bottle filling station (faucet 1X4GJ4Y8XDGZ) was installed at the Woodstown Armory in summer, 2019. Surveyors sampled this bottle filling station on 6/4/2019. Additional sampling of 7 faucets at this facility was also conducted on 9/11/2019. These faucets include LU62FCJZAJLM (right kitchen sink), EA2CDSBJ3UNA (left kitchen sink), MFPFT8IA2W82 (boiler room main spigot), D8QJ469BK7JJ (men’s bathroom sink), UT51696AI45G (utility room sink), 1X4GJ4Y8XDGZ (bottle filling station by women’s bathroom), and OFS6W6MXFQ (women’s bathroom sink). This sampling effort was conducted in response to the round 1 and 2 sampling results, in which the source of Pb contamination was unable to be identified. Samples were collected starting with the farthest “upstream” faucet (LU62FCJZAJLM), and sampling “downstream”. Figure WN1 shows the water flow direction and the location of these faucets. Three draws were collected from faucet 1X4GJ4Y8XDGZ because silt and rust is known to collect within this spigot fixture after extended periods of not being used.

### Results

6/4/2019 Sampling – Pb and Cu levels from faucet 1X4GJ4Y8XDGZ were at/or below detection during this survey event.

9/11/2019 Sampling – Pb and Cu levels from the furthest “upstream” faucet (LU62FCJZAJLM) were below the AL for both draws. Pb and Cu levels from the 2<sup>nd</sup> downstream faucet were below the AL for draw 1, but Cu concentrations increased to 1.8 mg/L for draw 2. This is unexpected, since this faucet had been flushed for 5min between draws 1 and 2, and the results from the immediately upstream faucet were below the AL. Sampling of the water main located outside of the Woodstown Armory confirmed that water at the main is below the Pb and Cu AL. This suggests that the source of contamination at the left kitchen sink is located either in the 30 meter

stretch of plumbing leading from the water main to the building, or in the left kitchen sink plumbing and/or fixture. Three samples were collected from the boiler room main spigot, in anticipation of the 1<sup>st</sup> draw containing sediment. As expected, this sample was discolored, and had a Pb concentration of 0.015 mg/L. Cu concentrations were below the AL. The Pb and Cu concentrations for the remaining 2 draws from this faucet were below the AL. Results from the remaining 4 “downstream” faucets, including the bottle filling station, were all below the AL for Pb and Cu.

Round #	Site	Building	Collection Date	Collection Time (24 hr clock)	Floor #	Faucet Description	Faucet ID	Sample ID (As Written On COC Form)	Draw	Flush Time (min)	Faucet Usage (Daily, Weekly, Monthly)	Lead Action Level (mg/L)	Lead Results (mg/L)	Copper Action Level (mg/L)	Copper Results (mg/L)
3	Woodstown	Armory	6/4/2019	10:35	1	New Water Fountain	1X4GJ4Y8XDZG	WN-6-4-19-3A	1	0	Daily	0.015	0.002	1.3	<0.04
3	Woodstown	Armory	6/4/2019	10:41	1	New Water Fountain	1X4GJ4Y8XDZG	WN-6-4-19-3B	2	6	Daily	0.015	<0.002	1.3	<0.04
3	Woodstown	Armory	9/11/2019	9:52	1	Right Kitchen Sink By Wall	LU62FCJZAJLM	WN-9-11-19-4A	1	0	RARELY	0.015	0.002	1.3	0.06
3	Woodstown	Armory	9/11/2019	9:57	1	Right Kitchen Sink By Wall	LU62FCJZAJLM	WN-9-11-19-4B	2	5	RARELY	0.015	<0.002	1.3	0.07
3	Woodstown	Armory	9/11/2019	9:53	1	Left Kitchen Sink By Door	EA2CDSBJ3UNA	WN-9-11-19-5A	1	0	RARELY	0.015	0.002	1.3	0.1
3	Woodstown	Armory	9/11/2019	9:58	1	Left Kitchen Sink By Door	EA2CDSBJ3UNA	WN-9-11-19-5B	2	5	RARELY	0.015	<0.002	1.3	1.8
3	Woodstown	Armory	9/11/2019	10:04A	1	Boiler Room Main	MFPFT8IA2W82	WN-9-11-19-6A	1	0	RARELY	0.015	0.015	1.3	0.4
3	Woodstown	Armory	9/11/2019	10:04B	1	Boiler Room Main	MFPFT8IA2W82	WN-9-11-19-6B	2	0	RARELY	0.015	<0.002	1.3	0.1
3	Woodstown	Armory	9/11/2019	10:14	1	Boiler Room Main	MFPFT8IA2W82	WN-9-11-19-6C	3	10	RARELY	0.015	<0.002	1.3	0.1
3	Woodstown	Armory	9/11/2019	10:20	1	Mens Bathroom Sink	D8QJ469BK7JJ	WN-9-11-19-7A	1	0	DAILY	0.015	<0.002	1.3	0.1
3	Woodstown	Armory	9/11/2019	10:25	1	Mens Bathroom Sink	D8QJ469BK7JJ	WN-9-11-19-7B	2	5	DAILY	0.015	<0.002	1.3	0.1
3	Woodstown	Armory	9/11/2019	10:29	1	Utility Room Sink	UT51696AI45G	WN-9-11-19-8A	1	0	RARELY	0.015	<0.002	1.3	0.1
3	Woodstown	Armory	9/11/2019	10:34	1	Utility Room Sink	UT51696AI45G	WN-9-11-19-8B	2	5	RARELY	0.015	<0.002	1.3	0.1
3	Woodstown	Armory	9/11/2019	10:36	1	Bottle Filling Station By Womens Bathroom	1X4GJ4Y8XDZG	WN-9-11-19-9A	1	0	DAILY	0.015	<0.002	1.3	0.1
3	Woodstown	Armory	9/11/2019	10:41	1	Bottle Filling Station By Womens Bathroom	1X4GJ4Y8XDZG	WN-9-11-19-9B	2	5	DAILY	0.015	<0.002	1.3	0.04
3	Woodstown	Armory	9/11/2019	10:47	1	Womens Bathroom Sink	OF56WFW6MXFQ	WN-9-11-19-10A	1	0	WEEKLY	0.015	<0.002	1.3	<0.04
3	Woodstown	Armory	9/11/2019	10:52	1	Womens Bathroom Sink	OF56WFW6MXFQ	WN-9-11-19-10B	2	5	WEEKLY	0.015	<0.002	1.3	0.07

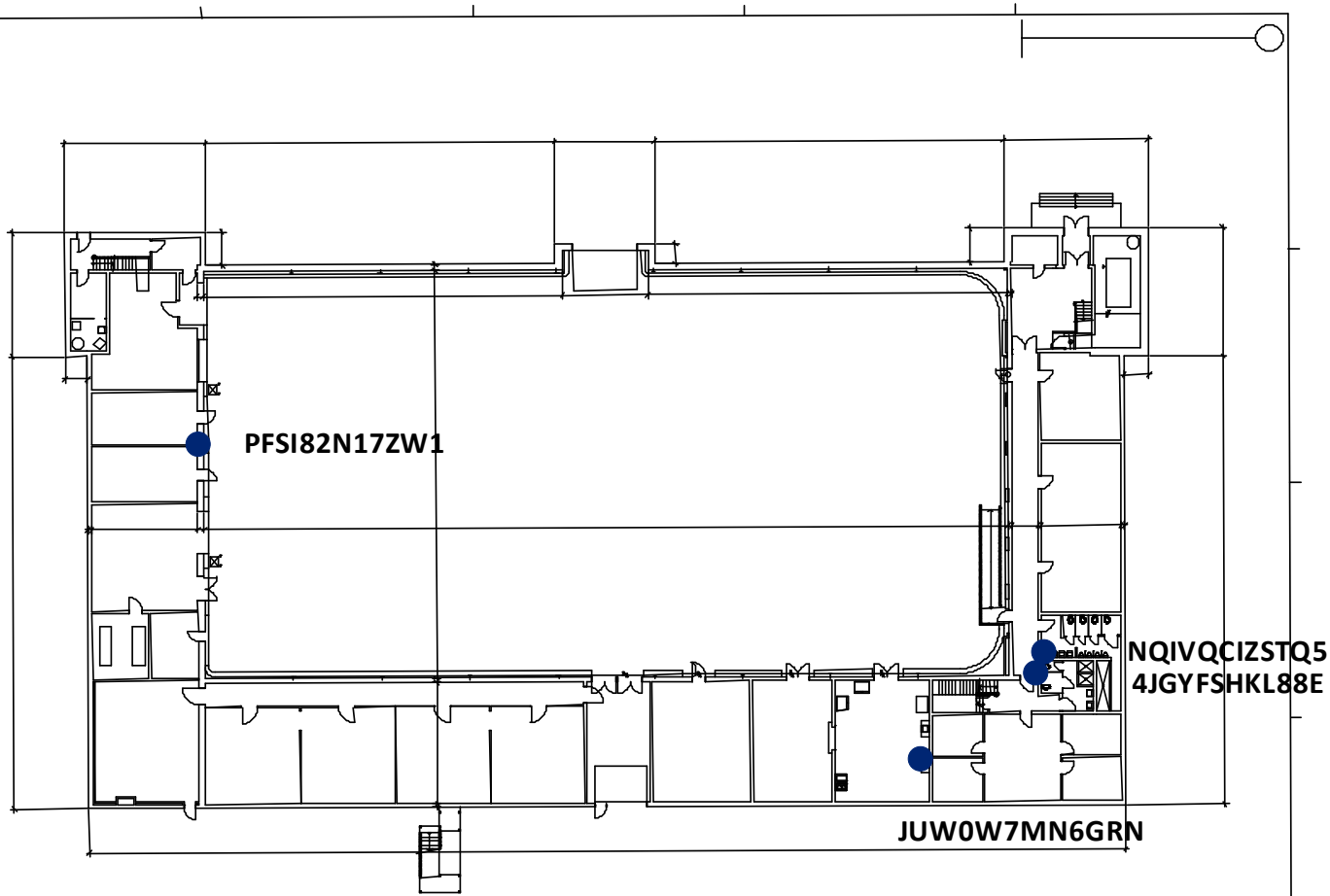
### Recommended Action Plans

- Develop a plan to identify the source of the Cu contamination in the left kitchen sink. Continue to use this sink for non-consumption purposes only. Possible causes of contamination include:
  1. Old plumbing between the water main at the street and the water POE into the building.
  2. Kitchen sink plumbing and/or soldering.
  3. Kitchen sink fixtures.

## **Figures**

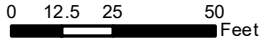
Site Floor Plans with Faucet Locations

**Figure AC1  
Atlantic City Armory  
Floor 1  
Faucet Locations  
Potable Water Sampling**



**Legend**

- EnvironmentalSampleLocation



Scale: 1 inch = 47 feet

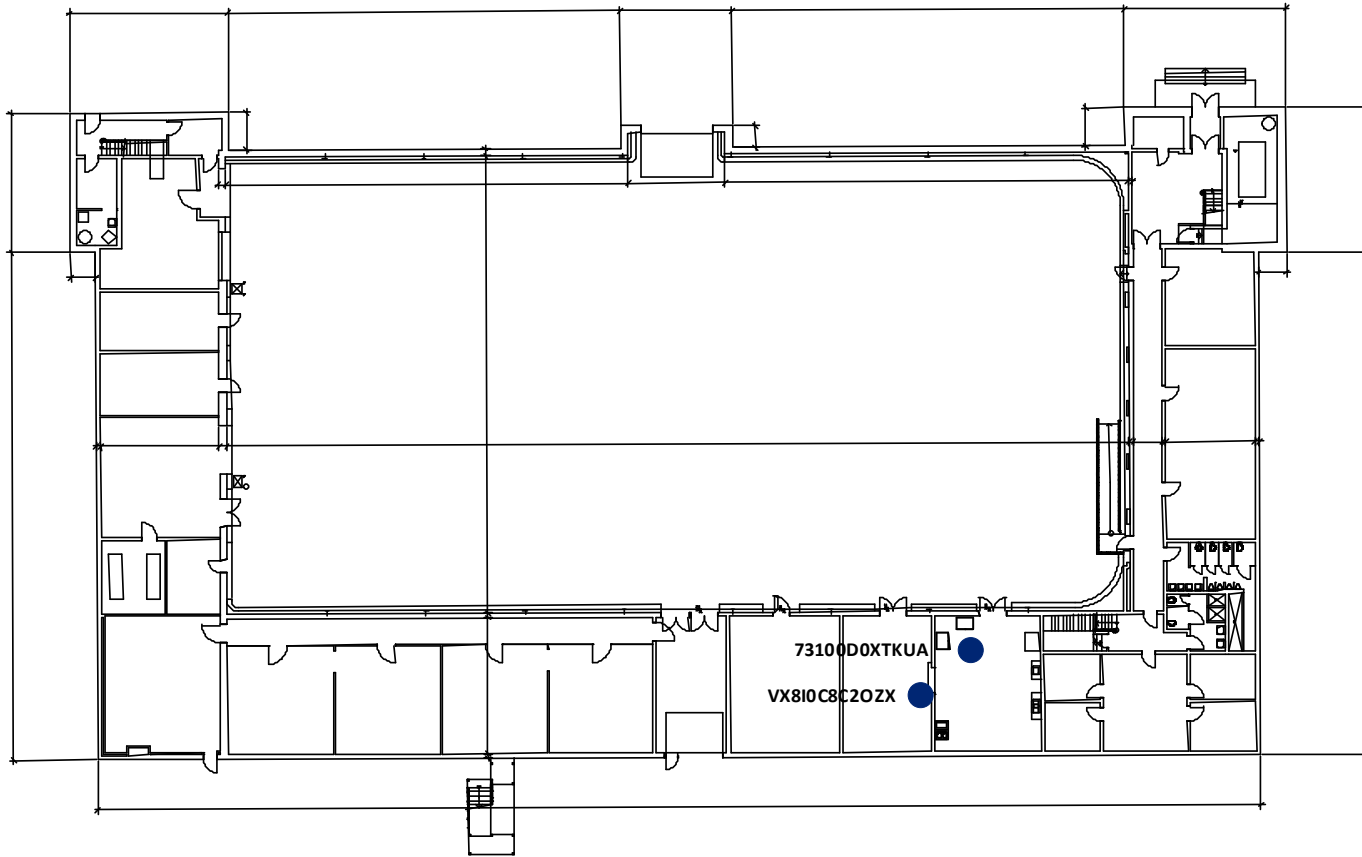
File: Figure AC 1

Date: 10/9/2019

Created By: John Hallagan



**Figure AC2  
Atlantic City Armory  
Floor 2  
Faucet Locations  
Potable Water Sampling**



**Legend**

- EnvironmentalSampleLocation

0 12.5 25 50 Feet



Scale: 1 inch = 43 feet

File: Figure AC2

Date: 10/9/2019

Created By: John Hallagan

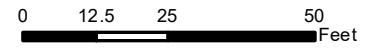
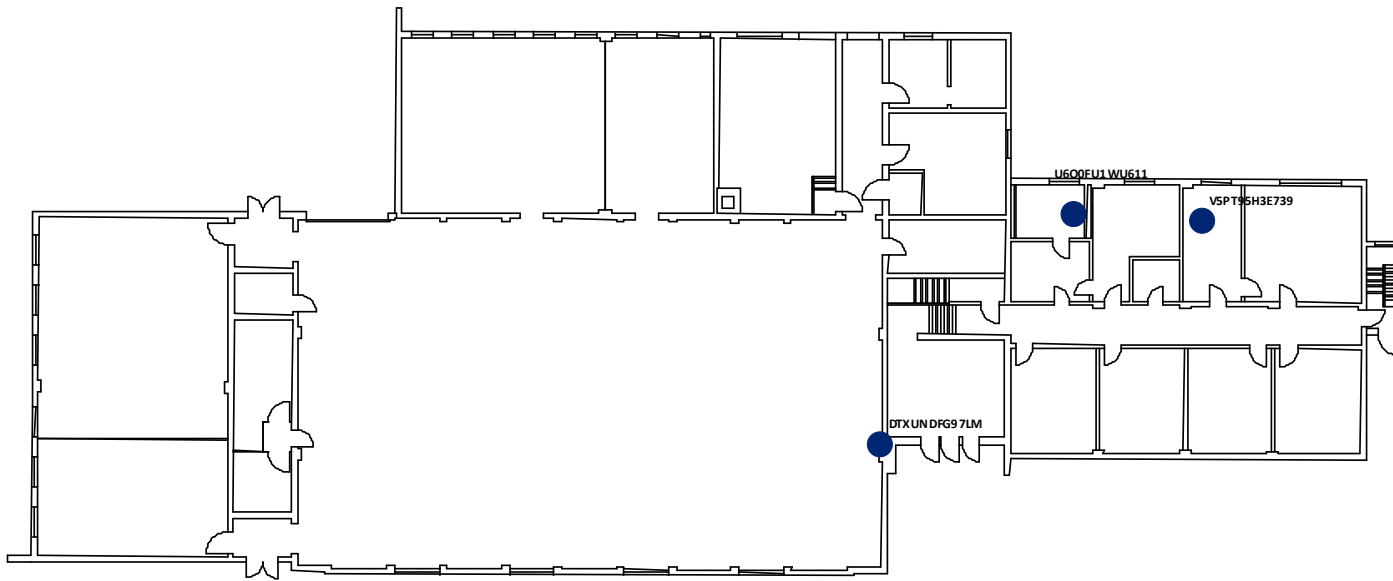




**Figure DR1  
Dover Armory  
Floor 1  
Faucet Locations  
Potable Water Sampling**

**Legend**

- EnvironmentalSampleLocation



Scale: 1 inch = 33 feet

File: Figure DR 1

Date: 10/9/2019

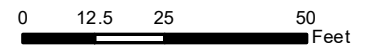
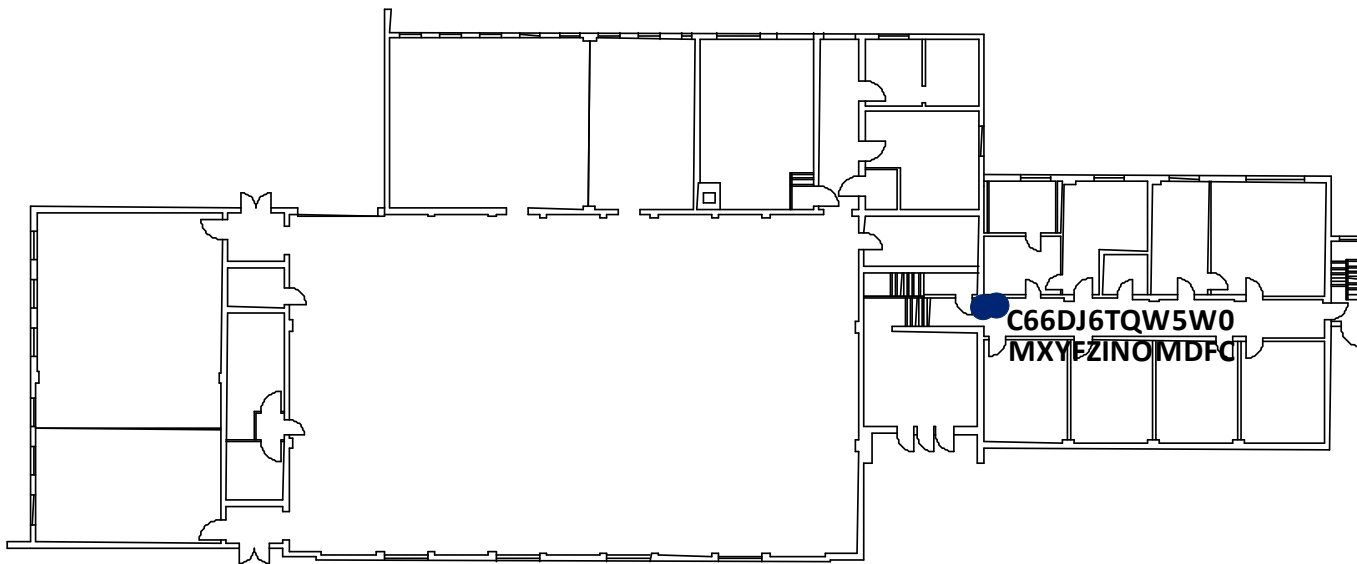
Created By: John Hallagan



**Figure DR2  
Dover Armory  
Floor 2  
Faucet Locations  
Potable Water Sampling**

**Legend**

● EnvironmentalSampleLocation



Scale: 1 inch = 34 feet

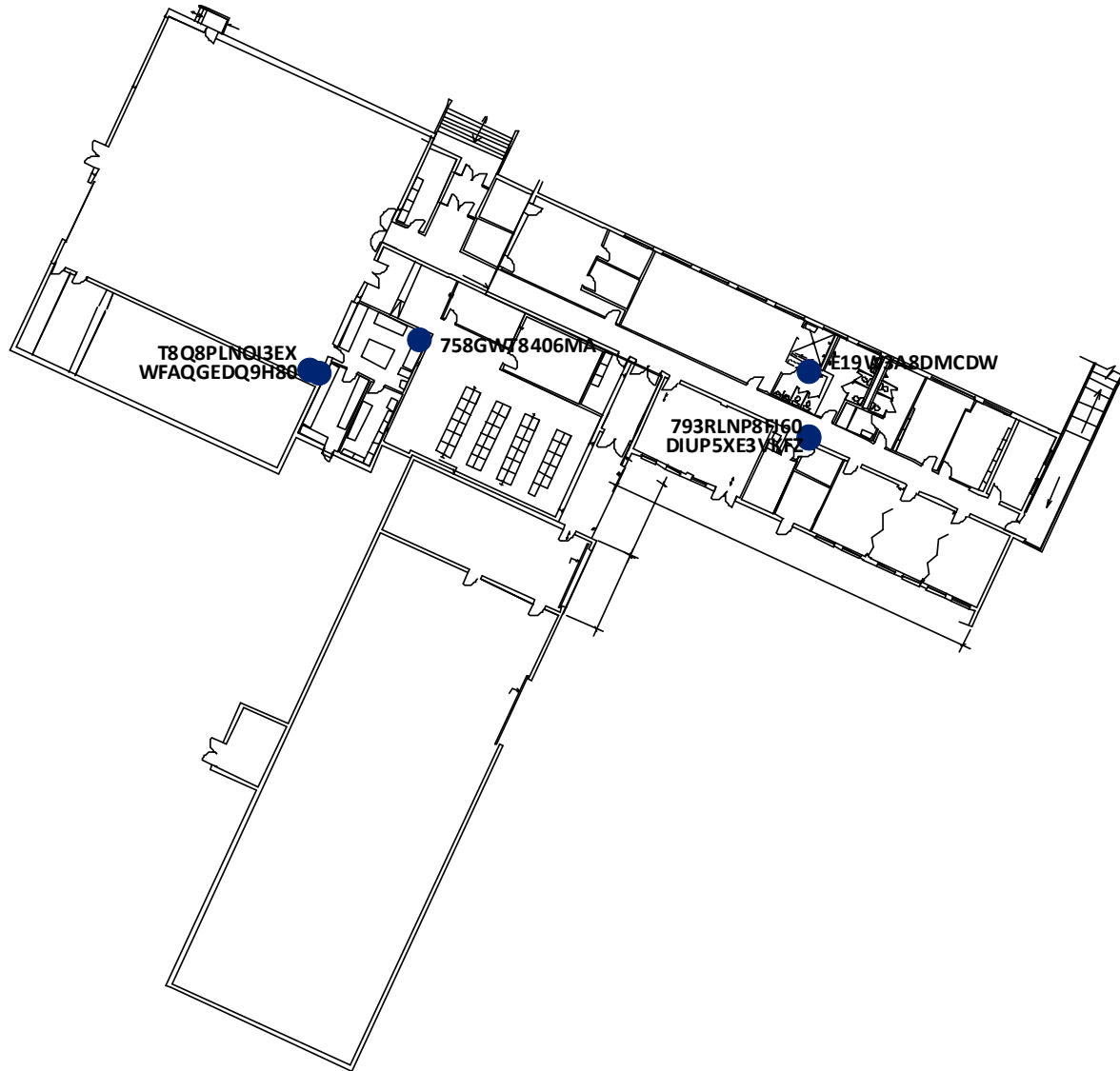
File: Figure DR2

Date: 10/9/2019

Created By: John Hallagan

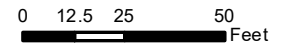


**Figure HACK1  
Hackettstown Armory  
Floor 1  
Faucet Locations  
Potable Water Sampling**



**Legend**

● EnvironmentalSampleLocation



Scale: 1 inch = 48 feet

File: Figure HACK1

Date: 10/9/2019

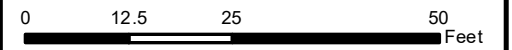
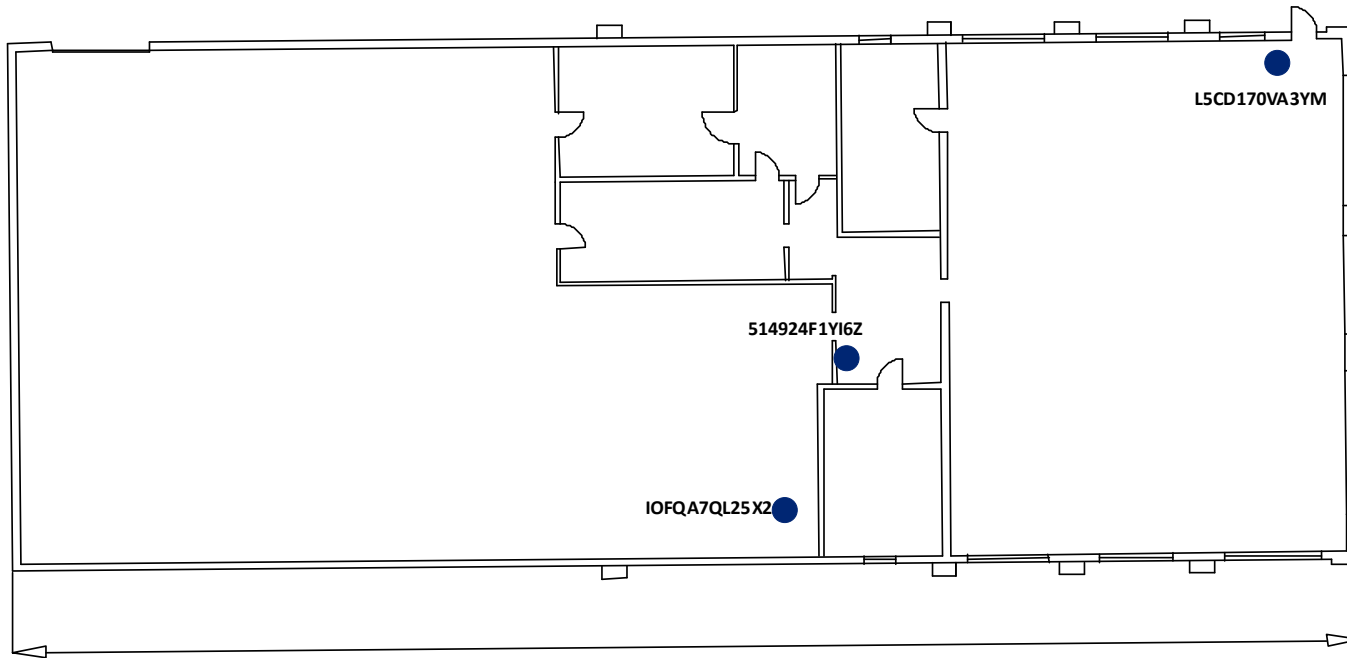
Created By: John Hallagan



**Figure LV1  
Lawrenceville FMS  
Floor 1  
Faucet Locations  
Potable Water Sampling**

**Legend**

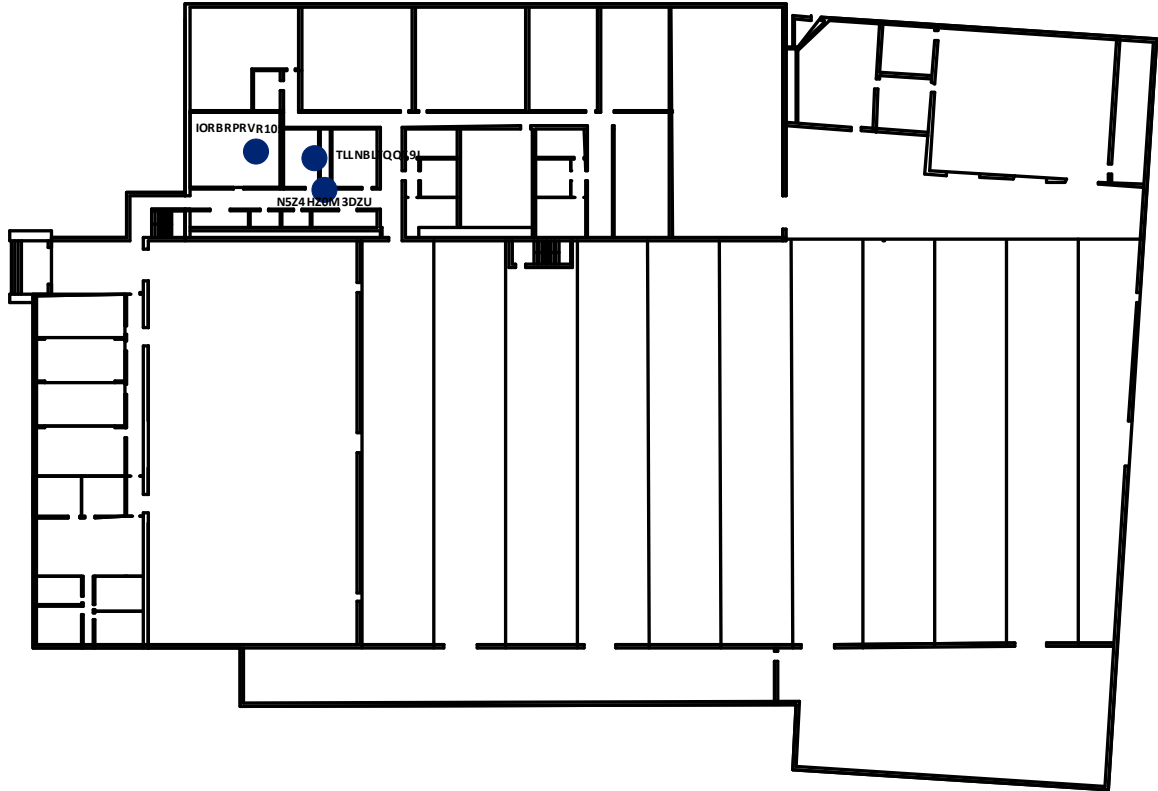
● EnvironmentalSampleLocation



Scale: 1 inch = 23 feet  
File: Figure LV1  
Date: 10/9/2019  
Created By: John Hallagan

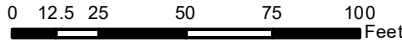


**Figure NK1  
Newark Armory  
Floor 1  
Faucet Locations  
Potable Water Sampling**



**Legend**

● EnvironmentalSampleLocation



Scale: 1 inch = 55 feet

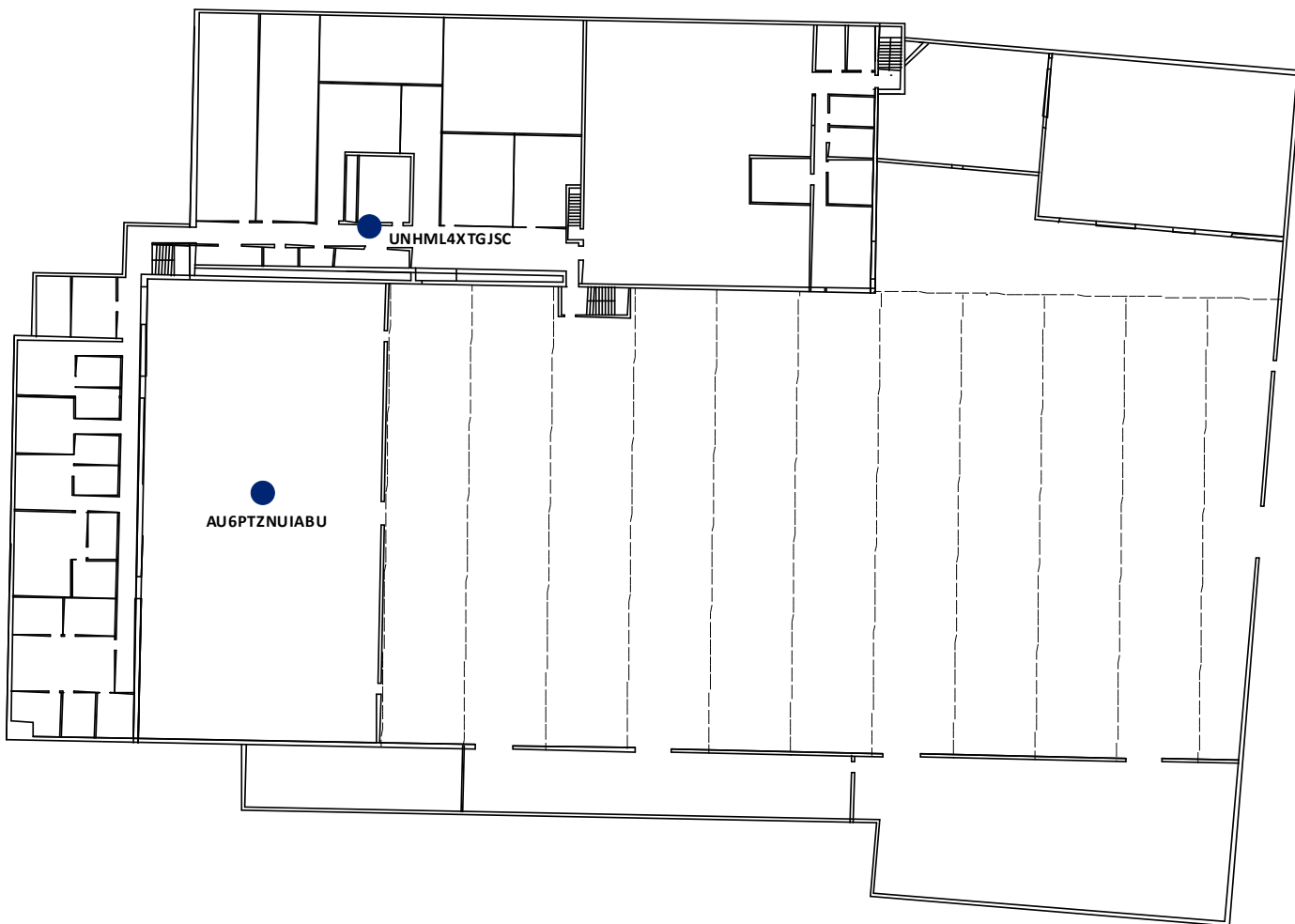
File: Figure NK1

Date: 10/9/2019

Created By: John Hallagan

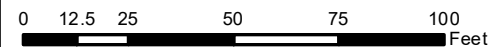


**Figure NK2  
Newark Armory  
Floor 2  
Faucet Locations  
Potable Water Sampling**



**Legend**

● EnvironmentalSampleLocation



Scale: 1 inch = 46 feet

File: Figure NK2

Date: 10/9/2019

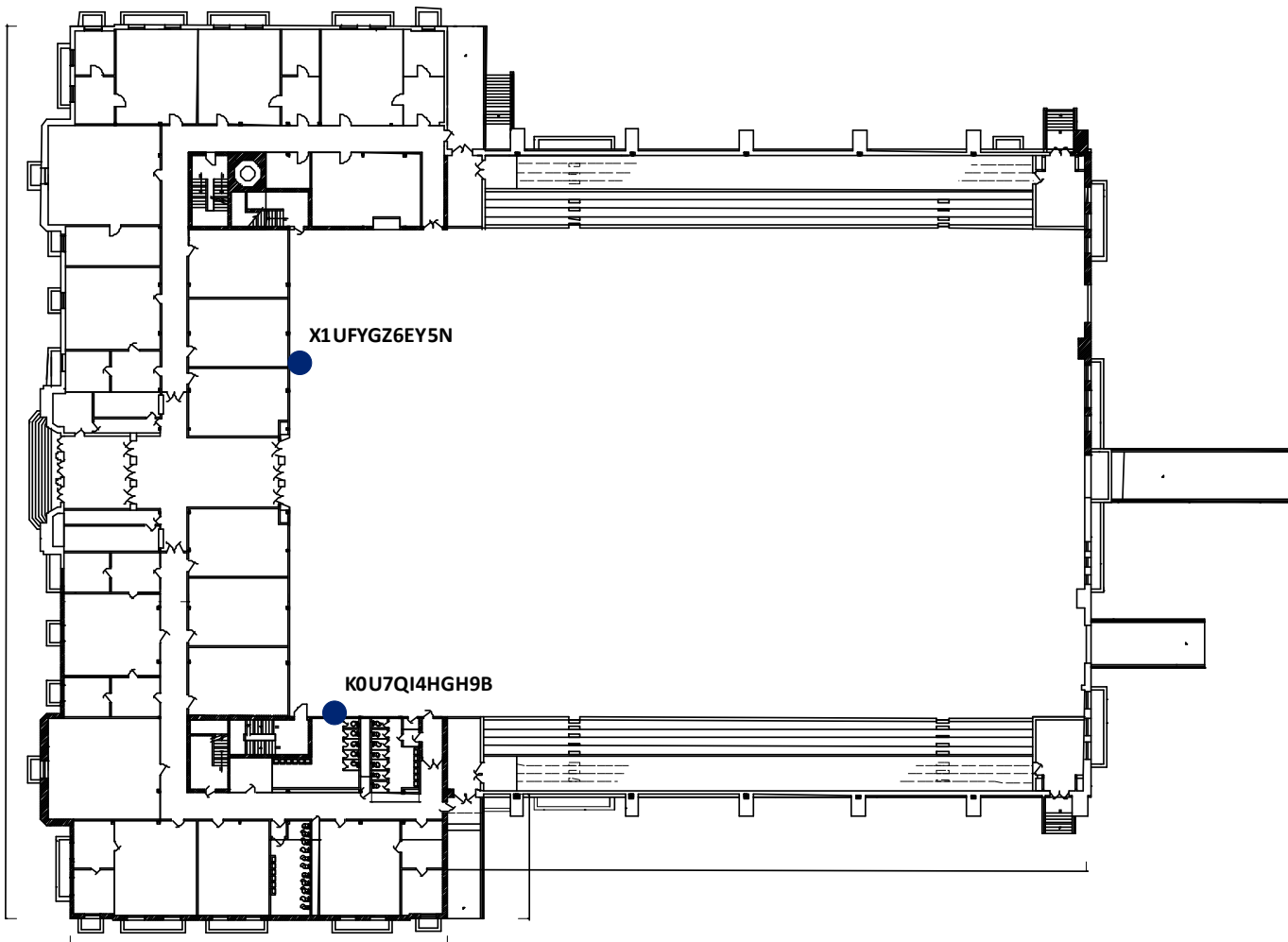
Created By: John Hallagan



**Figure TN1  
Teaneck Armory  
Floor 1  
Faucet Locations  
Potable Water Sampling**

**Legend**

● EnvironmentalSampleLocation



0 12.5 25 50 75 100 Feet

1 inch = 56 feet



Scale: 1 inch = 56 feet

File: Figure TN1

Date: 10/9/2019

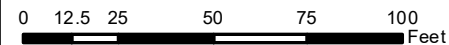
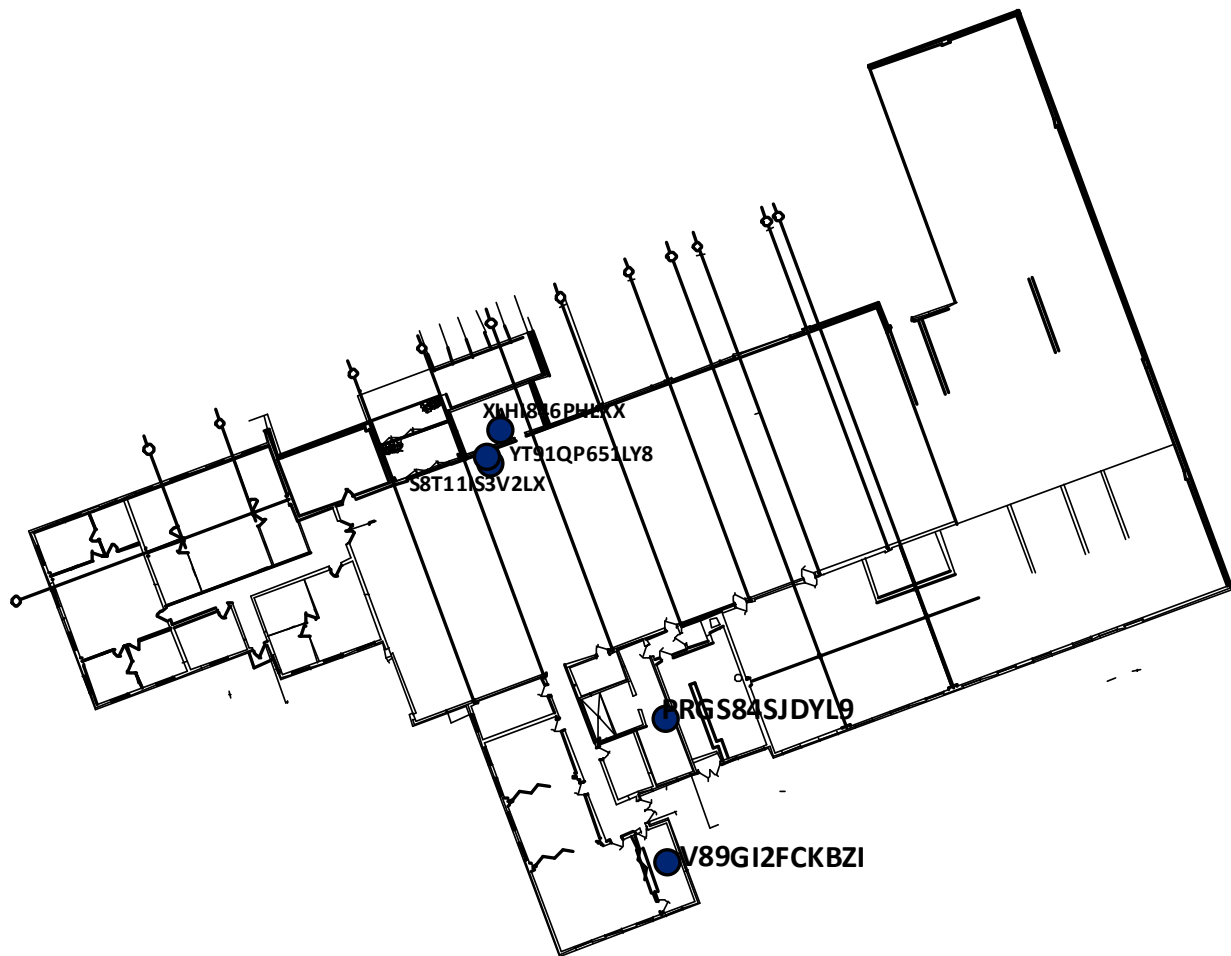
Created By: Your Name



**Figure WBE1  
Woodbridge Armory  
Floor 1  
Faucet Locations  
Potable Water Sampling**

**Legend**

● EnvironmentalSampleLocation



Scale: 1 inch = 51 feet

File: Figure WBE1

Date: 10/9/2019

Created By: John Hallagan

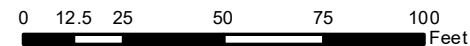
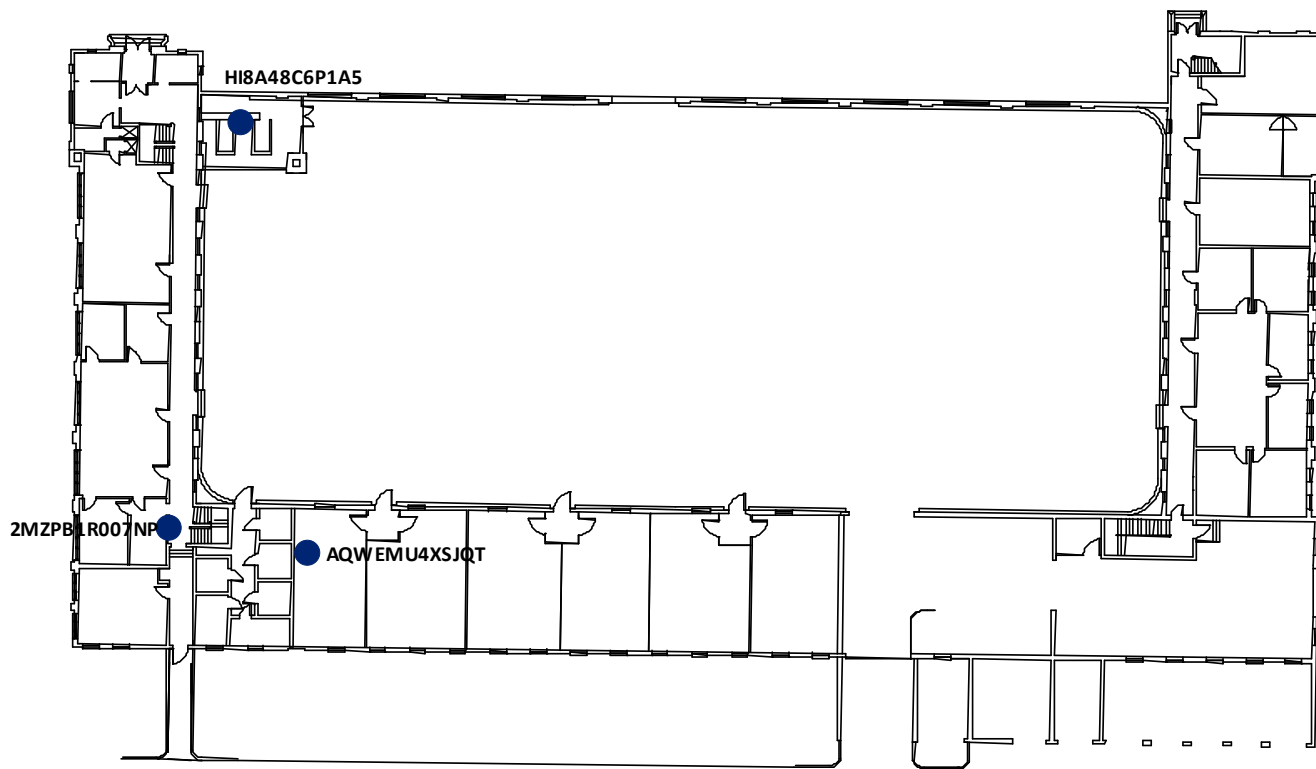




**Figure WD1  
Westfield Armory  
Floor 1  
Faucet Locations  
Potable Water Sampling**

**Legend**

● EnvironmentalSampleLocation



Scale: 1 inch = 48 feet

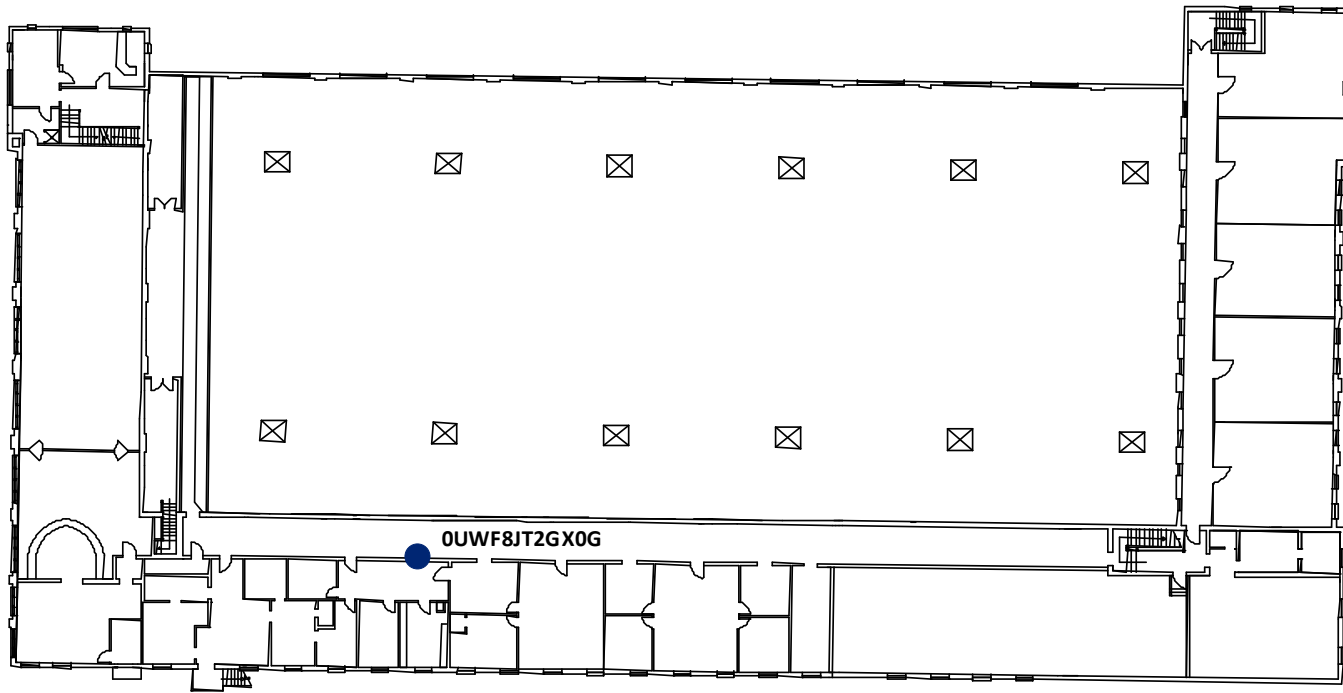
File: Figure WD1

Date: 10/9/2019

Created By: John Hallagan

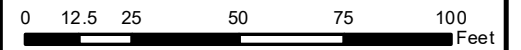


**Figure WD2  
Westfield Armory  
Floor 2  
Faucet Locations  
Potable Water Sampling**



**Legend**

- EnvironmentalSampleLocation



Scale: 1 inch = 45 feet

File: Figure WD2

Date: 10/9/2019

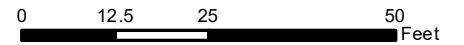
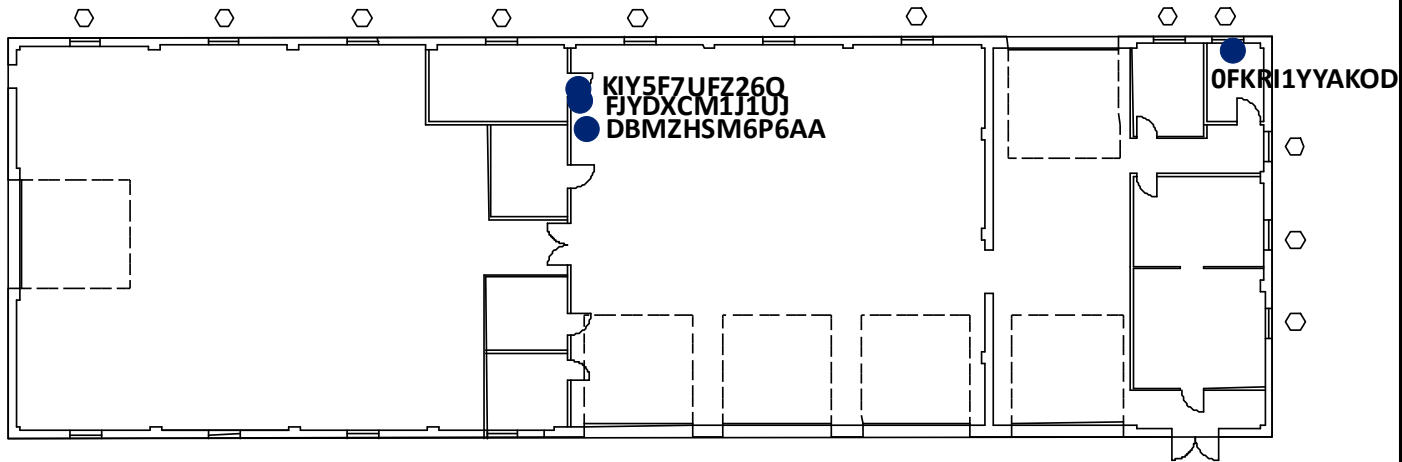
Created By: John Hallagan



**Figure WD3  
Westfield FMS  
Floor 1  
Faucet Locations  
Potable Water Sampling**

**Legend**

● EnvironmentalSampleLocation






--	--	--	--

--	--

--	--



Scale: 1 inch = 26 feet

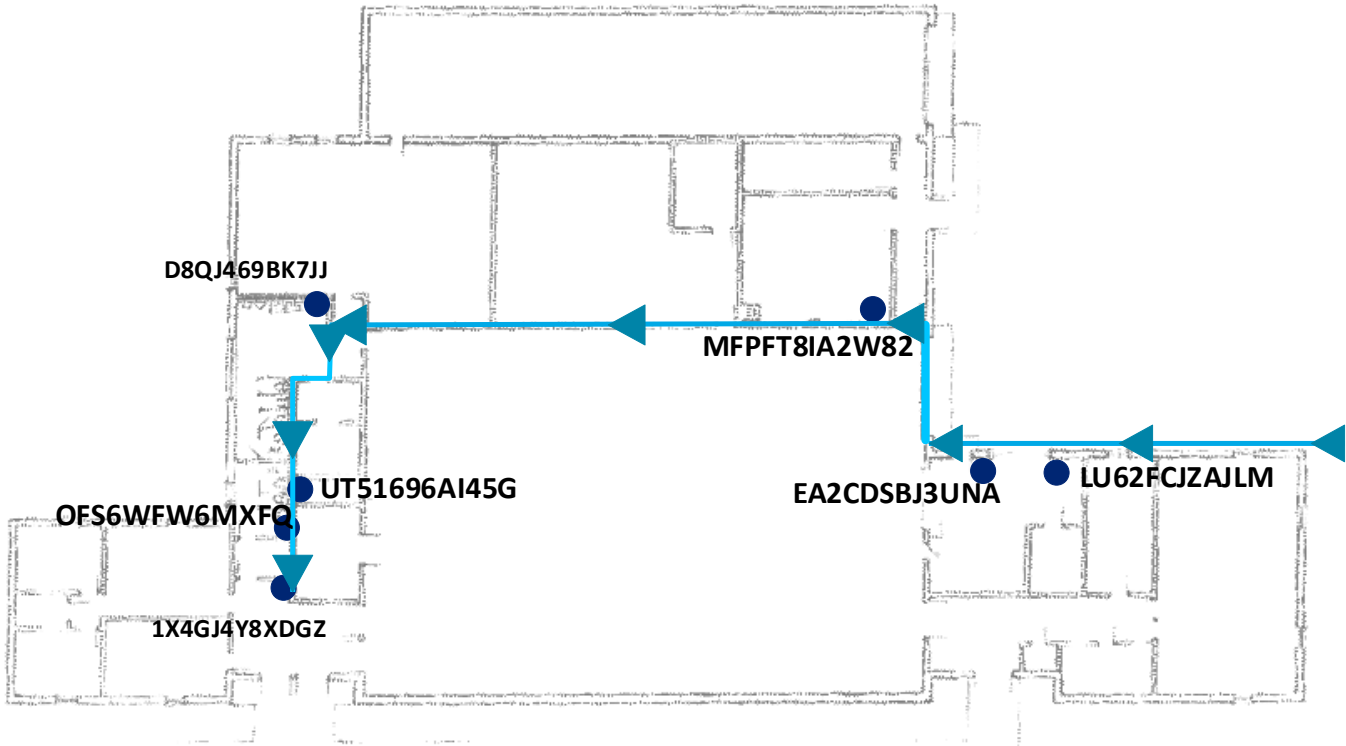
File: Figure WD3

Date: 10/9/2019

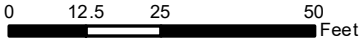
Created By: John Hallagan



**Figure WN1  
Woodstown Armory  
Floor 1  
Faucet Locations  
Potable Water Sampling**



- Legend**
- EnvironmentalSampleLocation
  - ← Flow



FLOOR PLAN  
DATE: 10/9/2019



Scale: 1 inch = 31 feet  
File: Figure WN 1  
Date: 10/9/2019  
Created By: John Hallagan



## **Appendix A**

### Faucet Identification List

Site	Building	Floor #	Faucet Description	Faucet ID
Atlantic City	Armory	1	New Water Fountain - 1st floor hallway	4JGYFSHKL88E
Atlantic City	Armory	2	New Water Fountain - 2nd floor hallway	73100D0XTKUA
Atlantic City	Armory	1	Gym Kitchen Sink	JUW0W7MN6GRN
Atlantic City	Armory	1	Mens Bathroom Sink	NQIVQCIZSTQ5
Atlantic City	Armory	1	New Water Fountain - gymnasium	PFSI82N17ZW1
Atlantic City	Armory	2	Kitchen Sink	VX8I0C8C2OZX
Bordentown	Building B	1	low sink fountain	3DUQWIR5Z17Z
Bordentown	Armory	1	kitchen sink w/o sprayer	FMZ1Z1Y5GHX8
Cape May	FMS	1	Water Fountain	0QXW85X6XUUO
Cape May	Armory	1	Kitchen Sink	E7EOFMADV3IM
Cherry Hill	FMS	1	FMS breakroom faucet	438GDYCH7GII
Cherry Hill	Armory	1	Left kitchen faucet	TRNPEP1R5HLI
Dover	FMS	1	Breakroom sink	8V2C0VEOKFFA
Dover	Armory	2	Water fountain	C66DJ6TQW5W0
Dover	Armory	1	Bottle Filling Station Drill Floor	DTXUNDFG97LM
Dover	Armory	2	Bottle Filling Station At Top Of Stairs	MXYZFZINOMDFC
Dover	Armory	1	Women's Bathroom Room 24 First Sink near door	U600FU1WU611
Dover	Armory	1	Lower Level Kitchen Sink	V5PT95H3E739
Fort Dix	3601	1	Back break room, middle sink	6JWF92O1UQ2T
Fort Dix	3650	1	Kitchen sink left of window	D4XHKVCI9NM2
Fort Dix	3651	1	Break room sink by microwave	KDLFPFUGJ4V9
Fort Dix	3650	1	Kitchen sink by dishwasher	L7DY062IPE1K
Fort Dix	3601	2	Break room sink, next to microwave	OT730ZG5KRAF
Fort Dix	3601	1	Break room sink, closest to oven	UWPYEN4BHBC2
Freehold	Armory	1	Kitchen Sink Near Ice*	1B9EG43L3F74
Freehold	Armory	1	Drinking Fountain	IQ5Y7URWIWCV
Freehold	Armory	1	Side Kitchen Sink	JXNX31HVBORF
Hackettstown	Armory	1	Kitchen Sink by Fire Extinguisher System	758GWT8406MA
Hackettstown	Armory	1	Water fountain across from Mens Room	793RLNP8FJ60
Hackettstown	Armory	1	Bottle Filling Station By Mens Room	DIUP5XE3VKFZ
Hackettstown	Armory	1	Locker Room (127), men's bathroom first sink	E19W3A8DMCDW
Hackettstown	Armory	1	Water Fountain by Kitchen	T8Q8PLNOI3EX
Hackettstown	Armory	1	Bottle Filling Station By Kitchen	WFAQGEDQ9H80
Hammonton	Armory	1	Water Fountain by Mens Room	63T6CIKH1XD7
Hammonton	Armory	1	Kitchen Sink	F7024VADS6E5
Jersey City	Armory	1	Water Fountain by Womens Locker Room	S2G9PCI5HF8K
Jersey City	Armory	B	Kitchen Sink	X3R1F4YKEALU
Lawrenceville	HSCOE	1	Break Room Sink	0K2AUOZ2B9SX
Lawrenceville	DMAVA HQ	B	HQ CAFATERIA SINK BY MICROWAVES	1M8PCNY6CE3G
Lawrenceville	Marshalls	1	Water Fountain by Bathroom	202HM98BSGAW
Lawrenceville	FMS	1	Breakroom Water Fountain	514924F1YI6Z
Lawrenceville	Marshalls	1	Break Room Sink	99Y2ZLAZTJW8
Lawrenceville	FMS	1	FMS Breakroom Sink	IOFQA7QL25X2
Lawrenceville	FMS	1	FMS Spigot by Water Fountain	L5CD170VA3YM

Site	Building	Floor #	Faucet Description	Faucet ID
Lawrenceville	Armory	1	ARMORY Kitchen sink	PH62VNR7EBO1
Lawrenceville	HSCOE	1	Water Fountain	XNT2NMPOQ67S
Mercer	ARNG Office	1	Kitchen Sink (below and to right of soap dispenser)	NDFM637CZ5GF
Mercer	Hangar	1	Breakroom sink	O45EG3H4EBUP
Mercer	State Police Office	1	Breakroom Sink	WTC54KMSATIG
Morristown	Armory	2	Kitchen Sink	9EY9O4N3C74S
Morristown	Armory	1	Water Fountain	E6LYELBVJ8E5
Morristown	Armory	2	Apartment Sink	WEVU08GE7VXG
Mount Holly	Armory	1	Kitchen faucet	F2VPMH2P5V4N
Newark	Armory	2	Kitchen Sink	AU6PTZNUIABU
Newark	Armory	1	Breakroom Sink	IORBRPRVR102
Newark	Armory	1	Bottle Filling Station By Womens Bathroom	N5Z4HZ0M3DZU
Newark	Armory	1	Women's room	TLLNBLTQQT9J
Newark	Armory	2	Bottle Filling Station By Bathroom	UNHML4XTGJSC
Picatinny	FMS	1	Kitchen Faucet	EX6SZ6FAMFPU
Picatinny	FMS	1	Water fountain outside kitchen	KPPHZRW010WH
Picatinny	FMS	2	Water fountain on 2nd floor	V7OD9TY8I346
Riverdale	Armory	1	Water Fountain	6TRA8NGD565W
Riverdale	Armory	1	Lower level kitchen Sink by microwave	G4F29TVCU4UJ
Riverdale	Armory	1	Kitchen Sink Left	W6WGYZA6I35D
Sea Girt	Bldg. 35 Armory	1	Water fountain by ladies room	OKNIE5DYOJD5
Sea Girt	Bldg. 15 Barracks	1	Water fountain	434AJPB2L4T
Sea Girt	Bldg. 11 Mess Hall	1	Chow house sink in dish return room	493BKYSO48W0
Sea Girt	Museum	1	Non-handicapped Bathroom Sink	55ZH2355LAMI
Sea Girt	Bldg. 24 Barracks	1	Bathroom sink against wall	AD5NIJZ0ELSX
Sea Girt	Bldg. 66 Museum	1	Office Bathroom	BK2BYDQQYPB5
Sea Girt	Bldg. 35 Armory	1	Kitchen sink	DWK6RK6AS240
Sea Girt	Offices	1	Break room sink	EXZXO253XVfq
Sea Girt	Bldg. 1 Residence	1	Kitchen sink	FN8XCILK7ABA
Sea Girt	Museum	1	Front room fountain	GD0WVDEBE3UQ
Sea Girt	Museum	1	Boiler Room Spigot	HHVTPNRQF002
Sea Girt	Bldg. 8 Barracks	1	Bathroom sink	IU3KTQNY5M4
Sea Girt	Bldg. 6 Residence	1	Kitchen sink	JWRLOFUYPUP
Sea Girt	Bldg. 17 Barracks	1	Bathroom sink	KB9XPSRVC8E5
Sea Girt	Bldg. 54 Classroom	1	Break room sink	L8K8E4MMFNLZ
Sea Girt	Bldg. 42	1	Break room sink	N1CNHB0PPCOP
Sea Girt	Bldg. 11 Mess Hall	1	Chow house sink near coffee blender	NDW7WTTQ7UED
Sea Girt	Bldg. 19 Barracks	1	Bathroom sink with coffee pot	P2XQD9ELG9KC
Sea Girt	and offices	1	Break Room	Q2TOYQNOSFRE
Sea Girt	Bldg. 7 Offices	1	Break room sink	QQEO6LZNC052
Sea Girt	Bldg. 23 Barracks	1	Men's room sink	R9UTTPA6EKBK
Sea Girt	Bldg. 14 Offices	1	Janitor Room (Slop Sink)	T8RTB169Q3GV
Sea Girt	Bldg. 36 FMS	1	Kitchen sink	VRLEVDI0SC41
Sea Girt	Bldg. 21 Barracks	1	Water fountain	WERC07HCZ7Q3

Site	Building	Floor #	Faucet Description	Faucet ID
Sea Girt	Bldg. 16	1	Break room sink	YOA2FXDQSDT2
Somerset	Armory	1	Kitchen Slnk 1, Dish Wash	1DWUZ5N99GG8
Somerset	Armory	1	Bar Sink	1RFJROM7QORH
Somerset	Armory	1	Kitchen Sink 2 Food prep under space heater	39RS3F3TIVXM
Somerset	FMS	1	Locker Room	EK5JB8CFWQNL
Somerset	Armory	1	Bottle Filling Station-Drill Floor	ZHTNMP5QE97B
Teaneck	Armory	2	Apartment Kitchen Sink	8WVCXP240KIQ
Teaneck	Armory	B	Basement Sink 1	GEMMB3FHZFB
Teaneck	Armory	1	Bottle Filling Station Drill Floor	K0U7QI4HGH9B
Teaneck	Armory	B	Basement Sink by Elevator	L4A2L7C5B2B4
Teaneck	FMS	1	Kitchen Sink FMS	PFLXMK6RDHXE
Teaneck	Armory	B	Basement Spigot in Sprinkler Room	TNC1O8HAK6ZM
Teaneck	Armory	1	Concession Stand	X1UFYGZ6EY5N
Toms River	Armory	1	Kitchen Sink by Extinguisher	XC3V66Y8LN8X
Tuckerton	Armory	1	Kitchen Sink	3QEL94V9UUZ0
Vineland	Armory	B	Kitchen sink by ice machine	AIFOY6PO2BVP
Vineland	Armory	B	Kitchen sink by windows	BYEK79L31KRL
Vineland	FMS	1	Break room sink	N5UA9BJHVBFS
Vineland	Armory	1	Water fountain by bathrooms	X7JRW3ZRMW7
Washington	Armory	2	Water fountain by Elevator	DVX1V6KGXUIR
Washington	Armory	1	Kitchen Sink by Mixer and Clock	EXFVH39JC5AN
Washington	Armory	1	Water fountain by Elevator	Q6AXVMSPN9YL
West Orange	CSMS	1	Breakroom Sink	8JAFWD0CUWA8
West Orange	Armory	2	Kitchen Sink (Left)	9Y4BUQ28DISL
Westfield	FMS	1	FMS Men's Bathroom Spigot	0FKRI1YYAKOD
Westfield	Armory	2	2nd Floor Bottle Filling Station	0UWF8JT2GX0G
Westfield	Armory	1	Hallway Bottle Filling Station	2M2PB1R007NP
Westfield	Armory	B	Bar Sink	A90F16RP25HQ
Westfield	Armory	1	Kitchen Sink	AQWEMU4XSJQT
Westfield	FMS	1	Sink by washer FMS	DBMZHS6P6AA
Westfield	FMS	1	New Bottle Filling Station	FJYDXCM1JUJ
Westfield	Armory	1	Boiler Room Spigot	HI8A48C6P1A5
Westfield	FMS	1	FMS Fountain by Sink and Laundry	KIY5F7UFZ26Q
Woodbridge	Armory	1	Men's Room	PRGS845JDYL9
Woodbridge	Armory	1	Water Fountain	S8T11IS3V2LX
Woodbridge	Armory	1	Right Kitchen Sink	V89GI2FCKBZI
Woodbridge	Armory	1	Women's room	XLHI846PHLXX
Woodbridge	Armory	1	Bottle Filling Station By Womens Bathroom	YT91QP651LY8
Woodbury	Armory	1	Water fountain by bathroom	2R5OL5JXG72S
Woodbury	Armory	1	Faucet by window	UAK397BRVNU6
Woodbury	Armory	1	Right faucet, back of kitchen	UWLPH36G7BXC
Woodstown	Armory	1	Bottle Filling Station By Womens Bathroom	1X4GJ4Y8XDGZ
Woodstown	Armory	1	Mens Bathroom Sink	D8QJ469BK7JJ
Woodstown	Armory	1	Left Kitchen Sink By Door	EA2CDSBJ3UNA



Site	Building	Floor #	Faucet Description	Faucet ID
Woodstown	Armory	1	Right sink by wall	LU62FCJZAJLM
Woodstown	Armory	1	Boiler Room Main	MFPFT8IA2W82
Woodstown	Armory	1	Womens Bathroom Sink	OFS6WFW6MXFQ
Woodstown	Armory	1	Utility Room Sink	UT51696AI45G

## **Appendix B**

Round 1, QA Round, Round 2, & Round 3 Water Sampling  
Results

Water Sampling Results

Round	Batch #	Site	Building	Collection Date	Collection Time (24 hr clock)	Building ID	Floor #	Faucet Description	Faucet ID	Sample ID (As Written On COC Form)	Draw	Flush Time (min)	Faucet Usage (Daily, Weekly, Monthly, etc)	Analysis Date	Lead Action Level (mg/L)	Lead Results (mg/L)	Copper Action Level (mg/L)	Copper Results (mg/L)
1	1	Atlantic City	Armory	1/29/2018	8:40	A	2	Kitchen Sink	VX8IOC8CZOZX	AY-1-29-18-2A	1	0	Daily	2/5/2018	0.015	<0.002	1.3	0.06
1	1	Atlantic City	Armory	1/29/2018	8:42	A	2	Kitchen Sink	VX8IOC8CZOZX	AY-1-29-18-2B	2	2	Daily	2/5/2018	0.015	<0.002	1.3	0.2
1	1	Atlantic City	Armory	1/29/2018	8:49	A	1	Gym Kitchen Sink	JUWOW7MNGGRN	AY-1-29-18-1A	1	0	Daily	2/5/2018	0.015	0.019	1.3	0.2
1	1	Atlantic City	Armory	1/29/2018	8:54	A	1	Gym Kitchen Sink	JUWOW7MNGGRN	AY-1-29-18-1B	2	5	Daily	2/5/2018	0.015	<0.002	1.3	0.2
1	3	Bordentown	Armory	2/22/2018	8:47	A	1	kitchen sink w/o sprayer	FMZ1Z1Y5GHX8	BN-02-22-18-1A	1	0	Daily	3/2/2018	0.015	<0.002	1.3	0.4
1	3	Bordentown	Armory	2/22/2018	8:52	A	1	kitchen sink w/o sprayer	FMZ1Z1Y5GHX8	BN-02-22-18-1B	2	5	Daily	3/2/2018	0.015	<0.002	1.3	0.1
1	3	Bordentown	Building B	2/22/2018	9:05	B	1	high sink fountain	3DUQWRSZ17Z	BN-02-22-18-2A	1	0	Weekly	3/2/2018	0.015	<0.002	1.3	0.2
1	3	Bordentown	Building B	2/22/2018	9:12	B	1	low sink fountain	3DUQWRSZ17Z	BN-02-22-18-2B	2	7	Weekly	3/2/2018	0.015	<0.002	1.3	0.4
1	2	Cape May	Armory	2/7/2018	10:44	A	1	Kitchen Sink	E7E0FMADV3IM	CY-2-7-18-1A	1	0	Weekly	2/14/2018 (Pb) 2/13/2018 (Cu)	0.015	<0.002	1.3	<0.04
1	2	Cape May	Armory	2/7/2018	10:48	A	1	Kitchen Sink	E7E0FMADV3IM	CY-2-7-18-1B	2	4	Weekly	2/14/2018 (Pb) 2/13/2018 (Cu)	0.015	<0.002	1.3	<0.04
1	2	Cape May	FMS	2/7/2018	10:56	B	1	Water Fountain	00XW85X6XUJO	CY-2-7-18-2A	1	0	Monthly	2/14/2018 (Pb) 2/13/2018 (Cu)	0.015	<0.002	1.3	<0.04
1	2	Cape May	FMS	2/7/2018	10:59	B	1	Water Fountain	00XW85X6XUJO	CY-2-7-18-2B	2	3	Monthly	2/14/2018 (Pb) 2/13/2018 (Cu)	0.015	<0.002	1.3	<0.04
1	3	Cherry Hill	Armory	2/23/2018	10:59	A	1	Left kitchen faucet	TRNPEP1R5HLI	CH-2-23-18-1A	1	0	Daily	3/5/2018	0.015	<0.002	1.3	<0.04
1	3	Cherry Hill	Armory	2/23/2018	11:04	A	1	Left kitchen faucet	TRNPEP1R5HLI	CH-2-23-18-1B	2	5	Daily	3/5/2018	0.015	<0.002	1.3	<0.04
1	3	Cherry Hill	FMS	2/23/2018	11:11	B	1	FMS breakroom faucet	438GDYCH7GII	CH-2-23-18-2A	1	0	Weekly	3/5/2018	0.015	<0.002	1.3	0.04
1	3	Cherry Hill	FMS	2/23/2018	11:13	B	1	FMS breakroom faucet	438GDYCH7GII	CH-2-23-18-2B	2	2	Weekly	3/5/2018	0.015	<0.002	1.3	0.05
1	5	Dover	Armory	3/9/2018	10:00	A	1	Lower level kitchen sink	V5PT95H3E739	DR-3-9-18-1A	1	0	ONCE YEARLY	3/16/18 (Pb) 3/15/18 (Cu)	0.015	0.02	1.3	1
1	5	Dover	Armory	3/9/2018	10:04	A	1	Lower level kitchen sink	V5PT95H3E739	DR-3-9-18-1B	2	4	ONCE YEARLY	3/16/18 (Pb) 3/15/18 (Cu)	0.015	<0.002	1.3	0.04
1	5	Dover	Armory	3/9/2018	10:07	A	2	Water fountain	C66D16TQWSWQ	DR-3-9-18-2A	1	0	MONTHLY	3/16/18 (Pb) 3/15/18 (Cu)	0.015	0.014	1.3	0.1
1	5	Dover	Armory	3/9/2018	10:11	A	2	Water fountain	C66D16TQWSWQ	DR-3-9-18-2B	2	4	MONTHLY	3/16/18 (Pb) 3/15/18 (Cu)	0.015	<0.002	1.3	0.06
1	5	Dover	FMS	3/9/2018	10:17	B	1	Breakroom sink	8V2COVEOKFFA	DR-3-9-18-3A	1	0	DAILY	3/16/18 (Pb) 3/15/18 (Cu)	0.015	<0.002	1.3	0.1
1	5	Dover	FMS	3/9/2018	10:21	B	1	Breakroom sink	8V2COVEOKFFA	DR-3-9-18-3B	2	4	DAILY	3/16/18 (Pb) 3/15/18 (Cu)	0.015	<0.002	1.3	0.1
1	6	Fort Dix	3601	3/23/2018	9:11	3601	1	Break room sink, closest to oven	UWYPEN48BHC2	FX-3-23-18-1A	1	0	Unknown	4/3/18 (Pb) 4/4/18 (Cu)	0.015	0.014	1.3	0.2
1	6	Fort Dix	3601	3/23/2018	9:14	3601	1	Back break room, middle sink	6JWF92O1UQ2T	FX-3-23-18-2A	1	0	Unknown	4/3/18 (Pb) 4/4/18 (Cu)	0.015	0.013	1.3	0.1
1	6	Fort Dix	3601	3/23/2018	9:22	3601	1	Break room sink, closest to oven	UWYPEN48BHC2	FX-3-23-18-1B	2	11	Unknown	4/3/18 (Pb) 4/4/18 (Cu)	0.015	<0.002	1.3	0.09
1	6	Fort Dix	3601	3/23/2018	9:24	3601	1	Back break room, middle sink	6JWF92O1UQ2T	FX-3-23-18-2B	2	10	Unknown	4/3/18 (Pb) 4/4/18 (Cu)	0.015	<0.002	1.3	0.08
1	6	Fort Dix	3601	3/23/2018	9:29	3601/RTSM	2	Break room sink, next to microwave	OT730ZG5KRAF	FX-3-23-18-3A	1	0	Unknown	4/3/18 (Pb) 4/4/18 (Cu)	0.015	<0.002	1.3	0.2
1	6	Fort Dix	3601	3/23/2018	9:34	3601/RTSM	2	Break room sink, next to microwave	OT730ZG5KRAF	FX-3-23-18-3B	2	5	Unknown	4/3/18 (Pb) 4/4/18 (Cu)	0.015	<0.002	1.3	0.1
1	6	Fort Dix	3650	3/23/2018	9:49	3650	1	Kitchen sink by dishwasher	L7DY062IPE1K	FX-3-23-18-4A	1	0	Rarely	4/3/18 (Pb) 4/4/18 (Cu)	0.015	0.002	1.3	0.5
1	6	Fort Dix	3650	3/23/2018	9:50	3650	1	Kitchen sink left of window	D4XHVKVC9NM2	FX-3-23-18-5A	1	0	Rarely	4/3/18 (Pb) 4/4/18 (Cu)	0.015	0.004	1.3	0.6
1	6	Fort Dix	3650	3/23/2018	9:55	3650	1	Kitchen sink by dishwasher	L7DY062IPE1K	FX-3-23-18-4B	2	6	Rarely	4/3/18 (Pb) 4/4/18 (Cu)	0.015	<0.002	1.3	0.4
1	6	Fort Dix	3650	3/23/2018	9:56	3650	1	Kitchen sink left of window	D4XHVKVC9NM2	FX-3-23-18-5B	2	6	Rarely	4/3/18 (Pb) 4/4/18 (Cu)	0.015	<0.002	1.3	0.06
1	6	Fort Dix	3651	3/23/2018	10:22	3651	1	Break room sink by microwave	KDLFFPUGJ4V9	FX-3-23-18-6A	1	0	Daily	4/3/18 (Pb) 4/4/18 (Cu)	0.015	<0.002	1.3	0.5
1	6	Fort Dix	3651	3/23/2018	10:27	3651	1	Break room sink by microwave	KDLFFPUGJ4V9	FX-3-23-18-6B	2	5	Daily	4/3/18 (Pb) 4/4/18 (Cu)	0.015	<0.002	1.3	0.2
1	3	Freehold	Armory	2/15/2018	11:12	A	1	Side Kitchen Sink	JXNX31HVBORF	FD-2-15-18-1A	1	0	Daily	3/2/2018	0.015	<0.002	1.3	0.4
1	3	Freehold	Armory	2/15/2018	11:14	A	1	Side Kitchen Sink	JXNX31HVBORF	FD-2-15-18-1B	2	2	Daily	3/2/2018	0.015	<0.002	1.3	0.2
1	3	Freehold	Armory	2/15/2018	11:14	A	1	Kitchen Sink Near Ice*	1B9EG43L3F74	FD-2-15-18-2A	1	0	Daily	3/2/2018	0.015	0.002	1.3	0.5
1	3	Freehold	Armory	2/15/2018	11:16	A	1	Kitchen Sink Near Ice*	1B9EG43L3F74	FD-2-15-18-2B	2	2	Daily	3/2/2018	0.015	<0.002	1.3	0.2
1	3	Freehold	Armory	2/15/2018	11:22	A	1	Drinking Fountain**	IQSY7URWIVCV	FD-2-15-18-3A	1	0	Daily	3/2/2018	0.015	<0.002	1.3	0.6
1	3	Freehold	Armory	2/15/2018	11:26	A	1	Drinking Fountain	IQSY7URWIVCV	FD-2-15-18-3B	2	4	Daily	3/2/2018	0.015	<0.002	1.3	0.4
1	7	Hackettstown	Armory	4/5/2018	11:14	A	1	Kitchen Sink by fire extinguisher SYS1	758GWT8406MA	HACK-4-5-18-1A	1	0	Weekly	4/17/18 (Pb) 4/18/18 (Cu)	0.015	0.017	1.3	0.2
1	7	Hackettstown	Armory	4/5/2018	11:24	A	1	Kitchen Sink by fire extinguisher SYS2	758GWT8406MA	HACK-4-5-18-1B	2	10	Weekly	4/17/18 (Pb) 4/18/18 (Cu)	0.015	<0.002	1.3	0.1
1	7	Hackettstown	Armory	4/5/2018	11:30	A	1	Water Fountain by Kitchen	T8Q8PLN0I3EX	HACK-4-5-18-2A	1	0	Weekly	4/17/18 (Pb) 4/18/18 (Cu)	0.015	0.003	1.3	0.2

1	7	Hackettstown	Armory	4/5/2018	11:35	A	1	Water Fountain by Kitchen	T8QBPLNOI3EX	HACK-4-5-18-2B	2	5	Weekly	4/17/18 (Pb), 4/18/18 (Cu)	0.015	0.005	1.3	0.3
1	7	Hackettstown	Armory	4/5/2018	11:40	A	1	Water fountain across from Mens Room	793RLNP8FJ60	HACK-4-5-18-3A	1	0	Daily	4/17/18 (Pb), 4/18/18 (Cu)	0.015	<0.002	1.3	0.3
1	7	Hackettstown	Armory	4/5/2018	11:44	A	1	Water fountain across from Mens Room	793RLNP8FJ60	HACK-4-5-18-3B	2	4	Daily	4/17/18 (Pb), 4/18/18 (Cu)	0.015	<0.002	1.3	0.2
1	5	Hammonton	Armory	3/8/2018	8:07	A	1	Kitchen Sink	F7O24VADS6E5	HN-03-08-18-1A	1	0	Unknown	3/16/18 (Pb), 3/15/18 (Cu)	0.015	0.003	1.3	0.07
1	5	Hammonton	Armory	3/8/2018	8:09	A	1	Kitchen Sink	F7O24VADS6E5	HN-03-08-18-1B	2	2	Unknown	3/16/18 (Pb), 3/15/18 (Cu)	0.015	<0.002	1.3	<0.04
1	5	Hammonton	Armory	3/8/2018	8:15	A	1	Water Fountain by Mens Room	63T6CKHXID7	HN-03-08-18-2A	1	0	Unknown	3/16/18 (Pb), 3/15/18 (Cu)	0.015	<0.002	1.3	0.04
1	5	Hammonton	Armory	3/8/2018	8:21	A	1	Water Fountain by Mens Room	63T6CKHXID7	HN-03-08-18-2B	2	6	Unknown	3/16/18 (Pb), 3/15/18 (Cu)	0.015	<0.002	1.3	<0.04
1	7	Jersey City	Armory	4/13/2018	11:32	A	1	Water Fountain by Womens Locker Room	SZG9PCISHF8K	JC-4-13-18-1A	1	0	Weekly	4/17/18 (Pb), 4/18/18 (Cu)	0.015	<0.002	1.3	0.7
1	7	Jersey City	Armory	4/13/2018	11:35	A	1	Water Fountain by Womens Locker Room	SZG9PCISHF8K	JC-4-13-18-1B	2	3	Weekly	4/17/18 (Pb), 4/18/18 (Cu)	0.015	<0.002	1.3	0.1
1	7	Jersey City	Armory	4/13/2018	11:44	A	B	Kitchen Sink	X3R1F4YKEALU	JC-4-13-18-2A	1	0	Monthly	4/17/18 (Pb), 4/18/18 (Cu)	0.015	<0.002	1.3	0.5
1	7	Jersey City	Armory	4/13/2018	11:54	A	B	Kitchen Sink	X3R1F4YKEALU	JC-4-13-18-2B	2	10	Monthly	4/17/18 (Pb), 4/18/18 (Cu)	0.015	<0.002	1.3	<0.04
1	1	Lawrenceville	DMAVA HQ	1/25/2018	8:44	B	Basement	HQ CAFATERIA SINK BY MICROWAVES	1M8PCNY6CE3G	LVH-1-25-18-1	1	0	DAILY	2/5/2018	0.015	<0.002	1.3	0.3
1	1	Lawrenceville	DMAVA HQ	1/25/2018	8:51	B	Basement	HQ CAFATERIA SINK BY MICROWAVES	1M8PCNY6CE3G	LVH-1-25-18-2	2	1	DAILY	2/5/2018	0.015	<0.002	1.3	0.04
1	1	Lawrenceville	Armory	1/25/2018	9:08	A	1	ARMORY Kitchen sink	PH62VNR7EBO1	LVA-1-25-18-1	1	0	DAILY	2/5/2018	0.015	<0.002	1.3	<0.04
1	1	Lawrenceville	Armory	1/25/2018	9:10	A	1	ARMORY Kitchen sink	PH62VNR7EBO1	LVA-1-25-18-2	2	1.5	DAILY	2/5/2018	0.015	<0.002	1.3	<0.04
1	1	Lawrenceville	FMS	1/25/2018	9:20	E	1	Break Room Sink FMS	IOFQA7QL25X2	LVF-1-25-18-2	2	2	DAILY	2/5/2018	0.015	<0.002	1.3	0.04
1	1	Lawrenceville	HSCOE	1/25/2018	9:48	C	1	Water Fountain	XNT2NMPQO67S	LVHS-1-25-18-2A	2	2	DAILY	2/5/2018	0.015	<0.002	1.3	<0.04
1	1	Lawrenceville	HSCOE	1/25/2018	9:58	C	1	Break Room Sink	OK2AUOZZB95X	LVHS-1-25-18-2B	2	2	DAILY	2/5/2018	0.015	<0.002	1.3	<0.04
1	1	Lawrenceville	Marshalls	1/25/2018	10:09	D	1	Water Fountain by Bathroom	202HM988SGAW	LVM-1-25-18-2A	2	1.5	DAILY	2/5/2018	0.015	<0.002	1.3	0.1
1	1	Lawrenceville	Marshalls	1/25/2018	10:14	D	1	Break Room Sink	99Y2ZLAZTJW8	LVM-1-25-18-2B	2	1.5	DAILY	2/5/2018	0.015	0.009	1.3	0.1
1	2	Lawrenceville	HSCOE	1/30/2018	7:03	C	1	Break Room Sink	OK2AUOZZB95X	LVHS-1-30-18-1B	1	0	Daily	2/14/2018 (Pb) 2/13/2018 (Cu)	0.015	<0.002	1.3	<0.04
1	2	Lawrenceville	HSCOE	1/30/2018	7:05	C	1	Water Fountain	XNT2NMPQO67S	LVHS-1-30-18-1A	1	0	Daily	2/14/2018 (Pb) 2/13/2018 (Cu)	0.015	<0.002	1.3	<0.04
1	2	Lawrenceville	Marshalls	1/30/2018	7:11	D	1	Water Fountain by Bathroom	202HM988SGAW	LVM-1-30-18-1A	1	0	Daily	2/14/2018 (Pb) 2/13/2018 (Cu)	0.015	<0.002	1.3	<0.04
1	2	Lawrenceville	Marshalls	1/30/2018	7:13	D	1	Break Room Sink	99Y2ZLAZTJW8	LVM-1-30-18-1B	1	0	Daily	2/14/2018 (Pb) 2/13/2018 (Cu)	0.015	<0.002	1.3	0.06
1	2	Lawrenceville	FMS	2/8/2018	7:55	E	1	Break Room Sink FMS	IOFQA7QL25X2	LVF-2-8-18-1A	1	0	Daily	2/14/2018 (Pb) 2/13/2018 (Cu)	0.015	0.093	1.3	0.5
1	2	Lawrenceville	FMS	2/8/2018	8:07	E	1	Break Room Sink FMS	IOFQA7QL25X2	LVF-2-8-18-1B	2	12	Daily	2/14/2018 (Pb) 2/13/2018 (Cu)	0.015	<0.002	1.3	<0.04
1	3	Mercer	State Police Office	2/22/2018	10:00	B	1	Break Room	WTC54KMSATIG	MR-02-22-18-1A	1	0	Daily	3/5/2018	0.015	<0.002	1.3	0.07
1	3	Mercer	State Police Office	2/22/2018	10:05	B	1	Break Room	WTC54KMSATIG	MR-02-22-18-1B	2	5	Daily	3/5/2018	0.015	0.048	1.3	0.07
1	3	Mercer	ARNG Office	2/22/2018	10:05	A	1	Kitchen Sink (below and to right of soap dispenser)	NDFM637CZ5GF	MR-02-22-18-2A	1	0	Monthly	3/5/2018	0.015	<0.002	1.3	0.1
1	3	Mercer	ARNG Office	2/22/2018	10:15	A	1	Kitchen Sink (below and to right of soap dispenser)	NDFM637CZ5GF	MR-02-22-18-2B	2	10	Monthly	3/5/2018	0.015	0.006	1.3	<0.04
1	3	Mercer	Hangar	2/22/2018	10:22	H	1	Breakroom sink	O45EG3H4EBUP	MR-02-22-18-3A	1	0	Yearly	3/5/2018	0.015	<0.002	1.3	0.3
1	3	Mercer	Hangar	2/22/2018	10:31	H	1	Breakroom sink	O45EG3H4EBUP	MR-02-22-18-3B	2	9	Yearly	3/5/2018	0.015	<0.002	1.3	<0.04
1	1	Morristown	Armory	2/1/2018	8:40	A	1	Water Fountain	E6LYELBVJ8E5	MNA-2-1-18-1A	1	0	Daily	2/5/2018	0.015	<0.002	1.3	0.4
1	1	Morristown	Armory	2/1/2018	8:43	A	1	Water Fountain	E6LYELBVJ8E5	MNA-2-1-18-1B	2	3	Daily	2/5/2018	0.015	<0.002	1.3	0.07
1	1	Morristown	Armory	2/1/2018	8:55	A	2	Kitchen Sink	9EY9Q4N3C745	MNA-2-1-18-2A	1	0	Weekly	2/5/2018	0.015	0.002	1.3	0.3
1	1	Morristown	Armory	2/1/2018	8:57	A	2	Kitchen Sink	9EY9Q4N3C745	MNA-2-1-18-2B	2	1.5	Weekly	2/5/2018	0.015	<0.002	1.3	0.05
1	1	Morristown	Armory	2/1/2018	9:08	A	2	Apartment Sink	WEVU08GE7VXG	MNA-2-1-18-3A	1	0	Daily	2/5/2018	0.015	<0.002	1.3	0.2
1	1	Morristown	Armory	2/1/2018	9:10	A	2	Apartment Sink	WEVU08GE7VXG	MNA-2-1-18-3B	2	2	Daily	2/5/2018	0.015	<0.002	1.3	0.04
1	3	Mount Holly	Armory	2/26/2018	8:43	A	1	Kitchen faucet	FZVPMH2P5V4N	MH-2-26-18-1A	1	0	Daily	3/5/2018	0.015	<0.002	1.3	0.4
1	3	Mount Holly	Armory	2/26/2018	8:47	A	1	Kitchen faucet	FZVPMH2P5V4N	MH-2-26-18-1B	2	4	Daily	3/5/2018	0.015	<0.002	1.3	0.4
1	7	Newark	Armory	4/13/2018	9:34	A	1	Break room sink	IORBRRPRV102	NK-4-13-18-1A	1	0	Daily	4/17/18 (Pb), 4/18/18 (Cu)	0.015	0.017	1.3	0.7
1	7	Newark	Armory	4/13/2018	9:38	A	1	Break room sink	IORBRRPRV102	NK-4-13-18-1B	2	4	Daily	4/17/18 (Pb), 4/18/18 (Cu)	0.015	0.034	1.3	0.6
1	7	Newark	Armory	4/13/2018	9:44	A	2	Kitchen Sink	AU6PTZNUJABU	NK-4-13-18-2A	1	0	Monthly	4/17/18 (Pb), 4/18/18 (Cu)	0.015	<0.002	1.3	0.1
1	7	Newark	Armory	4/13/2018	9:49	A	2	Kitchen Sink	AU6PTZNUJABU	NK-4-13-18-2B	2	5	Monthly	4/17/18 (Pb), 4/18/18 (Cu)	0.015	<0.002	1.3	0.07
1	5	Picatinny	FMS	3/9/2018	10:48	B	1	Kitchen Faucet	EX65Z6FAMFPU	PY-3-9-18-1A	1	0	DAILY	3/16/18 (Pb), 3/15/18 (Cu)	0.015	<0.002	1.3	0.07
1	5	Picatinny	FMS	3/9/2018	10:50	B	1	Water fountain outside kitchen	KPPHRZRW01DWH	PY-3-9-18-2A	1	0	DAILY	3/16/18 (Pb), 3/15/18 (Cu)	0.015	<0.002	1.3	0.2
1	5	Picatinny	FMS	3/9/2018	10:52	B	1	Kitchen Faucet	EX65Z6FAMFPU	PY-3-9-18-1B	2	4	DAILY	3/16/18 (Pb), 3/15/18 (Cu)	0.015	<0.002	1.3	<0.04
1	5	Picatinny	FMS	3/9/2018	10:54	B	1	Water fountain outside kitchen	KPPHRZRW01DWH	PY-3-9-18-2B	2	4	DAILY	3/16/18 (Pb), 3/15/18 (Cu)	0.015	<0.002	1.3	<0.04

1	5	Picatunny	FMS	3/9/2018	10:59	B	2		Water fountain on 2nd floor	V70D9TY8I346	PY-3-9-18-3A	1	0	DAILY	3/16/18 (Pb), 3/15/18 (Cu)	0.015	<0.002	1.3	0.1
1	5	Picatunny	FMS	3/9/2018	11:03	B	2		Water fountain on 2nd floor	V70D9TY8I346	PY-3-9-18-3B	2	4	DAILY	3/16/18 (Pb), 3/15/18 (Cu)	0.015	<0.002	1.3	<0.04
1	5	Riverdale	Armory	3/9/2018	8:55	A	1		Kitchen Sink Left	W6WGYZ6I35D	RD-3-9-18-1A	1	0	UNKNOWN	3/16/18 (Pb), 3/15/18 (Cu)	0.015	0.007	1.3	0.3
1	5	Riverdale	Armory	3/9/2018	8:58	A	1		Kitchen Sink Left	W6WGYZ6I35D	RD-3-9-18-1B	2	3	UNKNOWN	3/16/18 (Pb), 3/15/18 (Cu)	0.015	<0.002	1.3	0.1
1	5	Riverdale	Armory	3/9/2018	9:01	A	1		Water Fountain	6TR8BNG0565W	RD-3-9-18-2A	1	0	UNKNOWN	3/16/18 (Pb), 3/15/18 (Cu)	0.015	<0.002	1.3	0.2
1	5	Riverdale	Armory	3/9/2018	9:04	A	1		Water Fountain	6TR8BNG0565W	RD-3-9-18-2B	2	3	UNKNOWN	3/16/18 (Pb), 3/15/18 (Cu)	0.015	<0.002	1.3	0.2
1	5	Riverdale	Armory	3/9/2018	9:13	A	1		Lower level kitchen Sink by microwave	G4F29TVCU4UJ	RD-3-9-18-3A	1	0	UNKNOWN	3/19/18 (Pb), 3/16/18 (Cu)	0.015	<0.002	1.3	0.1
1	5	Riverdale	Armory	3/9/2018	9:16	A	1		Lower level kitchen Sink by microwave	G4F29TVCU4UJ	RD-3-9-18-3B	2	3	UNKNOWN	3/19/18 (Pb), 3/16/18 (Cu)	0.015	<0.002	1.3	0.1
1	4	Sea Girt	Bldg. 7 Offices	3/1/2018	6:50	7	1		Break room sink	QQE06LZNC052	SG-03-01-18-3A	1	0	Daily	3/6/2018	0.015	<0.002	1.3	0.04
1	4	Sea Girt	Bldg. 11 Mess Hall	3/1/2018	8:33	11	1		Chow house sink in dish return room	4938KY5048W0	SG-03-01-18-2A	1	0	Daily	3/6/2018	0.015	0.005	1.3	<0.04
1	4	Sea Girt	Bldg. 11 Mess Hall	3/1/2018	8:36	11	1		Chow house sink in dish return room	4938KY5048W0	SG-03-01-18-2B	2	3	Daily	3/6/2018	0.015	<0.002	1.3	<0.04
1	4	Sea Girt	Bldg. 11 Mess Hall	3/1/2018	8:39	11	1		Chow house sink near coffee blender	NDW7WTTQ7UEJ	SG-03-01-18-1A	1	0	Daily	3/6/2018	0.015	<0.002	1.3	<0.04
1	4	Sea Girt	Bldg. 11 Mess Hall	3/1/2018	8:41	11	1		Chow house sink near coffee blender	NDW7WTTQ7UEJ	SG-03-01-18-1B	2	2	Daily	3/6/2018	0.015	<0.002	1.3	<0.04
1	4	Sea Girt	Bldg. 7 Offices	3/1/2018	8:57	7	1		Break room sink	QQE06LZNC052	SG-03-01-18-3B	2	2	Daily	3/6/2018	0.015	<0.002	1.3	<0.04
1	4	Sea Girt	Bldg. 15 Barracks	3/1/2018	9:21	15	1		Water fountain	434AIPB82L4T	SG-03-01-18-4A	1	0	Unkown	3/6/2018	0.015	0.004	1.3	0.06
1	4	Sea Girt	Bldg. 15 Barracks	3/1/2018	9:27	15	1		Water fountain	434AIPB82L4T	SG-03-01-18-4B	2	6	Unkown	3/6/2018	0.015	<0.002	1.3	0.08
1	4	Sea Girt	Bldg. 59 Warehouses & Offices	3/1/2018	9:37	59	1		Break room sink	EXX2O253XVFQ	SG-03-01-18-5A	1	0	Daily	3/6/2018	0.015	<0.002	1.3	<0.04
1	4	Sea Girt	Bldg. 59 Warehouses & Offices	3/1/2018	9:39	59	1		Break room sink	EXX2O253XVFQ	SG-03-01-18-5B	2	2	Daily	3/6/2018	0.015	<0.002	1.3	<0.04
1	4	Sea Girt	Bldg. 54 Classroom	3/1/2018	9:44	54	1		Break room sink	L8K8E4MMFNLZ	SG-03-01-18-6A	1	0	Daily	3/6/2018	0.015	0.002	1.3	0.2
1	4	Sea Girt	Bldg. 54 Classroom	3/1/2018	9:46	54	1		Break room sink	L8K8E4MMFNLZ	SG-03-01-18-6B	2	2	Daily	3/6/2018	0.015	<0.002	1.3	0.06
1	4	Sea Girt	Bldg. 42	3/1/2018	9:52	42	1		Break room sink	N1CNHBP0PPCOP	SG-03-01-18-7A	1	0	Daily	3/6/2018	0.015	<0.002	1.3	0.1
1	4	Sea Girt	Bldg. 42	3/1/2018	9:54	42	1		Break room sink	N1CNHBP0PPCOP	SG-03-01-18-7B	2	2	Daily	3/6/2018	0.015	<0.002	1.3	0.2
1	4	Sea Girt	Bldg. 16	3/1/2018	10:00	16	1		Break room sink	YOA2FXDQSDTJ2	SG-03-01-18-8A	1	0	Daily	3/8/2018 (Pb), 3/7/2018 (Cu)	0.015	<0.002	1.3	<0.04
1	4	Sea Girt	Bldg. 16	3/1/2018	10:05	16	1		Break room sink	YOA2FXDQSDTJ2	SG-03-01-18-8B	2	5	Daily	3/8/2018 (Pb), 3/7/2018 (Cu)	0.015	<0.002	1.3	<0.04
1	4	Sea Girt	Bldg. 35 Armory	3/1/2018	10:15	35	1		Kitchen sink	DWK6R6KA5240	SG-03-01-18-9A	1	0	Daily	3/8/2018 (Pb), 3/7/2018 (Cu)	0.015	<0.002	1.3	0.1
1	4	Sea Girt	Bldg. 35 Armory	3/1/2018	10:19	35	1		Kitchen sink	DWK6R6KA5240	SG-03-01-18-9B	2	4	Daily	3/8/2018 (Pb), 3/7/2018 (Cu)	0.015	<0.002	1.3	<0.04
1	4	Sea Girt	Bldg. 35 Armory	3/1/2018	10:21	35	1		Water fountain by ladies room	OKNIE5YOJ0D5	SG-03-01-18-10A	1	0	Daily	3/8/2018 (Pb), 3/7/2018 (Cu)	0.015	<0.002	1.3	0.07
1	4	Sea Girt	Bldg. 35 Armory	3/1/2018	10:26	35	1		Water fountain by ladies room	OKNIE5YOJ0D5	SG-03-01-18-10B	2	5	Daily	3/8/2018 (Pb), 3/7/2018 (Cu)	0.015	0.002	1.3	<0.04
1	4	Sea Girt	Bldg. 24 Barracks	3/1/2018	10:31	24	1		Bathroom sink against wall	AD5NIUZ0ELSX	SG-03-01-18-11A	1	0	Daily	3/8/2018 (Pb), 3/7/2018 (Cu)	0.015	<0.002	1.3	0.08
1	4	Sea Girt	Bldg. 24 Barracks	3/1/2018	10:35	24	1		Bathroom sink against wall	AD5NIUZ0ELSX	SG-03-01-18-11B	2	4	Daily	3/8/2018 (Pb), 3/7/2018 (Cu)	0.015	<0.002	1.3	0.1
1	4	Sea Girt	Bldg. 19 Barracks	3/1/2018	10:43	19	1		Bathroom sink with coffee pot	P2XQD9ELG9KC	SG-03-01-18-12A	1	0	Daily	3/8/2018 (Pb), 3/7/2018 (Cu)	0.015	<0.002	1.3	0.9
1	4	Sea Girt	Bldg. 19 Barracks	3/1/2018	10:45	19	1		Bathroom sink with coffee pot	P2XQD9ELG9KC	SG-03-01-18-12B	2	2	Daily	3/8/2018 (Pb), 3/7/2018 (Cu)	0.015	<0.002	1.3	<0.04
1	4	Sea Girt	Bldg. 66 Museum	3/1/2018	11:00	66	1		Water fountain	G00WVDEBE3UQ	SG-03-01-18-13A	1	0	Daily	3/8/2018 (Pb), 3/7/2018 (Cu)	0.015	<b>0.023</b>	1.3	0.04
1	4	Sea Girt	Bldg. 66 Museum	3/1/2018	11:01	66	1		Office Bathroom	BK28YDQYBP5	SG-03-01-18-14A	1	0	Daily	3/8/2018 (Pb), 3/7/2018 (Cu)	0.015	<0.002	1.3	<0.04
1	4	Sea Girt	Bldg. 66 Museum	3/1/2018	11:03	66	1		Water fountain	G00WVDEBE3UQ	SG-03-01-18-13B	2	3	Daily	3/8/2018 (Pb), 3/7/2018 (Cu)	0.015	0.014	1.3	0.04
1	4	Sea Girt	Bldg. 66 Museum	3/1/2018	11:06	66	1		Office Bathroom	BK28YDQYBP5	SG-03-01-18-14B	2	5	Daily	3/8/2018 (Pb), 3/7/2018 (Cu)	0.015	<0.002	1.3	<0.04
1	4	Sea Girt	Bldg. 56 Warehouse and offices	3/1/2018	11:19	56	1		Break Room	Q27QYQNOSFRE	SG-03-01-18-15A	1	0	Daily	3/8/2018 (Pb), 3/7/2018 (Cu)	0.015	<0.002	1.3	<0.04
1	4	Sea Girt	Bldg. 56 Warehouse and offices	3/1/2018	11:23	56	1		Break Room	Q27QYQNOSFRE	SG-03-01-18-15B	2	4	Daily	3/8/2018 (Pb), 3/7/2018 (Cu)	0.015	<0.002	1.3	<0.04
1	4	Sea Girt	Bldg. 6 Residence	3/1/2018	11:32	Q6	1		Kitchen sink	JWRLOFUYPLUP	SG-03-01-18-16A	1	0	Daily	3/8/2018 (Pb), 3/7/2018 (Cu)	0.015	<0.002	1.3	0.08
1	4	Sea Girt	Bldg. 1 Residence	3/1/2018	11:33	Q1	1		Kitchen sink	FN8XCLK7ABA	SG-03-01-18-17A	1	0	Daily	3/8/2018 (Pb), 3/7/2018 (Cu)	0.015	<0.002	1.3	<0.04
1	4	Sea Girt	Bldg. 1 Residence	3/1/2018	11:35	Q1	1		Kitchen sink	FN8XCLK7ABA	SG-03-01-18-17B	2	2	Daily	3/9/2018 (Pb), 3/7/2018 (Cu)	0.015	<0.002	1.3	<0.04
1	4	Sea Girt	Bldg. 6 Residence	3/1/2018	11:36	Q6	1		Kitchen sink	JWRLOFUYPLUP	SG-03-01-18-16B	2	4	Daily	3/8/2018 (Pb), 3/7/2018 (Cu)	0.015	<0.002	1.3	<0.04
1	4	Sea Girt	Bldg. 36 FMS	3/1/2018	11:46	36	1		Kitchen sink	VRLEVDIOSC41	SG-03-01-18-18A	1	0	Daily	3/9/2018 (Pb), 3/7/2018 (Cu)	0.015	<0.002	1.3	0.2
1	4	Sea Girt	Bldg. 36 FMS	3/1/2018	11:52	36	1		Kitchen sink	VRLEVDIOSC41	SG-03-01-18-18B	2	6	Daily	3/9/2018 (Pb), 3/7/2018 (Cu)	0.015	<0.002	1.3	0.1
1	4	Sea Girt	Bldg. 8 Barracks	3/1/2018	12:09	8	1		Bathroom sink	IU3KTQNY55M4	SG-03-01-18-19B	2	2	Daily	3/9/2018 (Pb), 3/7/2018 (Cu)	0.015	<0.002	1.3	0.06
1	4	Sea Girt	Bldg. 14 Offices	3/1/2018	12:18	14	1		Janitor Room (Slop Sink)	T8RTB169Q3GV	SG-03-01-18-20A	1	0	Daily	3/9/2018 (Pb), 3/7/2018 (Cu)	0.015	<0.002	1.3	0.2
1	4	Sea Girt	Bldg. 14 Offices	3/1/2018	12:21	14	1		Janitor Room (Slop Sink)	T8RTB169Q3GV	SG-03-01-18-20B	2	3	Daily	3/9/2018 (Pb), 3/7/2018 (Cu)	0.015	<0.002	1.3	0.1
1	4	Sea Girt	Bldg. 17 Barracks	3/1/2018	12:28	17	1		Bathroom sink	KB9XPSRVCE85	SG-03-01-18-21B	2	2	Daily	3/9/2018 (Pb), 3/7/2018 (Cu)	0.015	<0.002	1.3	0.3
1	4	Sea Girt	Bldg. 21 Barracks	3/1/2018	12:35	21	1		Water fountain	WERC07HCZ7Q3	SG-03-01-18-22A	1	0	Daily	3/9/2018 (Pb), 3/7/2018 (Cu)	0.015	<0.002	1.3	0.7
1	4	Sea Girt	Bldg. 21 Barracks	3/1/2018	12:38	21	1		Water fountain	WERC07HCZ7Q3	SG-03-01-18-22B	2	3	Daily	3/9/2018 (Pb), 3/7/2018 (Cu)	0.015	<0.002	1.3	0.3



QA	2	Newark	Armory	6/5/2018	12:32	A	1	Breakroom Sink	IORBRPRV102	NK-6-5-18-2A	1	0	Daily	6/11/2018	0.015	0.005	1.3	0.1
QA	2	Newark	Armory	6/5/2018	12:36	A	1	Breakroom Sink	IORBRPRV102	NK-6-5-18-2B	2	4	Daily	6/11/2018	0.015	0.005	1.3	0.5
QA	2	Sea Girt	Museum	6/6/2018	11:15	66	1	Front room fountain	GDOWDEBE3UQ	SG-6-6-18-2R-1A	1	0	Weekly	6/11/2018	0.015	0.019	1.3	0.5
QA	1	Somerset	Armory	5/16/2018	9:49	A	1	Kitchen Sink 2 Food prep under space heater	39R53F3TIVXM	ST-5-16-18-2AR2	1	0	Monthly	5/18/18 (Pb) 5/21/18 (Cu)	0.015	0.015	1.3	<0.04
QA	1	Teaneck	Armory	5/16/2018	11:13	A	B	Basement Sink 2	LA42L7CS82B4	TNA-5-16-18-4AR2	1	0	Monthly	5/18/18 (Pb) 5/21/18 (Cu)	0.015	0.005	1.3	<0.04
QA	2	Woodbridge	Armory	6/6/2018	9:50	A	1	Water Fountain	S8T11S3V2LX	WB-6-6-18-2R-1A	1	0	Weekly	6/11/2018	0.015	0.004	1.3	0.3
QA	2	Woodbridge	Armory	6/6/2018	9:58	A	1	Right Kitchen Sink	V89G12FC8Z1	WB-6-6-18-2R-2A	1	0	Monthly	6/11/2018	0.015	0.209	1.3	0.2
QA	2	Woodstown	Armory	6/7/2018	9:36	A	1	Right sink by wall	LU62FC2A1LM	WN-6-7-18-R2-1A	1	0	Weekly	6/11/2018	0.015	0.023	1.3	0.2
2	1	Atlantic City	Armory	9/4/2018	12:40	A	1	Gym Kitchen Sink	JUWOW7MN6GRN	AY-9-4-18-1A-R2	1	0	Not Used	9/13/2018	0.015	0.009	1.3	0.2
2	1	Atlantic City	Armory	9/4/2018	12:45	A	1	Gym Kitchen Sink	JUWOW7MN6GRN	AY-9-4-18-1B-R2	2	5	Not Used	9/13/2018	0.015	<0.002	1.3	0.1
2	1	Atlantic City	Armory	9/4/2018	12:55	A	1	Mens Bathroom Sink	NQIVQICZ1TQ5	AY-9-4-18-2A-R2	1	0	Daily	9/13/2018	0.015	<0.002	1.3	0.3
2	1	Atlantic City	Armory	9/4/2018	13:00	A	1	Mens Bathroom Sink	NQIVQICZ1TQ5	AY-9-4-18-2B-R2	2	5	Daily	9/13/2018	0.015	<0.002	1.3	0.07
2	1	Dover	Armory	8/30/2018	10:06	A	1	Women's Bathroom Room 24 First Sink near door	U600FU1WU611	DR-8-30-18-1A-R2	1	0	Daily	9/13/2018	0.015	<0.002	1.3	0.04
2	1	Dover	Armory	8/30/2018	10:11	A	1	Women's Bathroom Room 24 First Sink near door	U600FU1WU611	DR-8-30-18-1B-R2	2	5	Daily	9/13/2018	0.015	0.007	1.3	0.08
2	1	Dover	Armory	8/30/2018	10:12	A	1	Lower Level Kitchen Sink	V5PT95H3E739	DR-8-30-18-2A-R2	1	0	Monthly	9/13/2018	0.015	0.025	1.3	0.1
2	1	Dover	Armory	8/30/2018	10:17	A	1	Lower Level Kitchen Sink	V5PT95H3E739	DR-8-30-18-2B-R2	2	5	Monthly	9/13/2018	0.015	<0.002	1.3	0.05
2	1	Hackettstown	Armory	8/30/2018	9:08	A	1	Locker Room (127), men's bathroom first sink	E19W3A80MCDW	HACK-8-30-18-1A-R2	1	0	Daily	9/13/2018	0.015	<0.002	1.3	0.1
2	1	Hackettstown	Armory	8/30/2018	9:22	A	1	Kitchen Sink by Fire Extinguisher System	758GW78406MA	HACK-8-30-18-2A-R2	1	0	Monthly	9/13/2018	0.015	0.003	1.3	0.3
2	1	Hackettstown	Armory	8/30/2018	9:27	A	1	Kitchen Sink by Fire Extinguisher System	758GW78406MA	HACK-8-30-18-2B-R2	2	5	Monthly	9/13/2018	0.015	<0.002	1.3	0.1
2	1	Lawrenceville	FMS	8/30/2018	12:55	E	1	FMS Breakroom Sink	IOFQA7QL25X2	LVF-8-30-18-1A-R2	1	0	Daily	9/14/2018	0.015	<0.002	1.3	0.06
2	1	Lawrenceville	FMS	8/30/2018	13:01	E	1	FMS Breakroom Sink	IOFQA7QL25X2	LVF-8-30-18-1B-R2	2	6	Daily	9/14/2018	0.015	<0.002	1.3	0.04
2	1	Lawrenceville	FMS	8/30/2018	13:07	E	1	FMS Spigot by Water Fountain	L5CD170VA3YM	LVF-8-30-18-2A-R2	1	0	Rare	9/14/2018	0.015	1.09	1.3	10
2	1	Lawrenceville	FMS	8/30/2018	13:08	E	1	FMS Spigot by Water Fountain	L5CD170VA3YM	LVF-8-30-18-2B-R2	2	2(s)	Rare	9/14/2018	0.015	0.004	1.3	<0.04
2	1	Mercer	State Police Office	8/30/2018	12:15	B	1	Utility Sink/Slop Sink	SRPBRV5SCWPG	MR-8-30-18-1A-R2	1	0	3xWeek	9/14/2018	0.015	<0.002	1.3	0.08
2	1	Mercer	State Police Office	8/30/2018	12:20	B	1	Utility Sink/Slop Sink	SRPBRV5SCWPG	MR-8-30-18-1B-R2	2	5	3xWeek	9/14/2018	0.015	<0.002	1.3	0.07
2	1	Mercer	State Police Office	8/30/2018	12:22	B	1	Breakroom Sink	WTC54KM5ATIG	MR-8-30-18-2A-R2	1	0	Daily	9/14/2018	0.015	<0.002	1.3	0.08
2	1	Mercer	State Police Office	8/30/2018	12:28	B	1	Breakroom Sink	WTC54KM5ATIG	MR-8-30-18-2B-R2	2	6	Daily	9/14/2018	0.015	<0.002	1.3	0.09
2	1	Newark	Armory	9/6/2018	10:30	A	1	Breakroom Sink	IORBRPRV102	NK-9-6-18-1A-R2	1	0	Monthly	9/12/2018	0.015	0.009	1.3	0.6
2	1	Newark	Armory	9/6/2018	10:35	A	1	Breakroom Sink	IORBRPRV102	NK-9-6-18-1B-R2	2	5	Monthly	9/12/2018	0.015	0.018	1.3	0.5
2	1	Newark	Armory	9/6/2018	10:42	A	1	Women's room	TLNBLTQQ79J	NK-9-6-18-2A-R2	1	0	Monthly	9/12/2018	0.015	<0.002	1.3	0.1
2	1	Newark	Armory	9/6/2018	10:47	A	1	Women's room	TLNBLTQQ79J	NK-9-6-18-2B-R2	2	5	Monthly	9/12/2018	0.015	<0.002	1.3	0.08
2	1	Sea Girt	Museum	9/5/2018	8:36	66	1	Boiler Room Spigot	HHVTPNRCFOO2	SG-9-5-18-1A-R2	1	0	Daily	9/12/2018	0.015	0.053	1.3	5.5
2	1	Sea Girt	Museum	9/5/2018	8:41	66	1	Boiler Room Spigot	HHVTPNRCFOO2	SG-9-5-18-1B-R2	2	5	Daily	9/12/2018	0.015	<0.002	1.3	0.04
2	1	Sea Girt	Museum	9/5/2018	8:43	66	1	Non-handicapped Bathroom Sink	55Z235SLAMI	SG-9-5-18-2A-R2	1	0	Daily	9/12/2018	0.015	0.004	1.3	0.1
2	1	Sea Girt	Museum	9/5/2018	8:48	66	1	Non-handicapped Bathroom Sink	55Z235SLAMI	SG-9-5-18-2B-R2	2	5	Daily	9/12/2018	0.015	<0.002	1.3	0.07
2	1	Sea Girt	Museum	9/5/2018	8:50	66	1	Front room fountain	GDOWDEBE3UQ	SG-9-5-18-3A-R2	1	0	Not Used	9/12/2018	0.015	<0.002	1.3	0.5
2	1	Sea Girt	Museum	9/5/2018	8:55	66	1	Front room fountain	GDOWDEBE3UQ	SG-9-5-18-3B-R2	2	5	Not Used	9/12/2018	0.015	0.031	1.3	0.1
2	1	Somerset	Armory	9/6/2018	14:27	A	1	Kitchen Sink 2 Food prep under space heater	39R53F3TIVXM	SS-9-6-18-1A-R2	1	0	Rare	9/13/2018	0.015	0.009	1.3	0.3
2	1	Somerset	Armory	9/6/2018	14:32	A	1	Kitchen Sink 2 Food prep under space heater	39R53F3TIVXM	SS-9-6-18-1B-R2	2	5	Rare	9/13/2018	0.015	<0.002	1.3	0.2
2	1	Somerset	Armory	9/6/2018	14:40	A	1	Bar Sink	1RFJROMZQORH	SS-9-6-18-2A-R2	1	0	Rare	9/13/2018	0.015	0.019	1.3	0.9
2	1	Somerset	Armory	9/6/2018	14:45	A	1	Bar Sink	1RFJROMZQORH	SS-9-6-18-2B-R2	2	5	Rare	9/13/2018	0.015	<0.002	1.3	0.09
2	1	Teaneck	Armory	9/6/2018	9:23	A	B	Basement Sink by Elevator	LA42L7CS82B4	TNA-9-6-18-1A-R2	1	0	Rare	9/12/2018	0.015	<0.002	1.3	0.733
2	1	Teaneck	Armory	9/6/2018	9:28	A	B	Basement Sink by Elevator	LA42L7CS82B4	TNA-9-6-18-1B-R2	2	5	Rare	9/12/2018	0.015	0.006	1.3	0.737
2	1	Teaneck	Armory	9/6/2018	9:35	A	B	Basement Spigot in Sprinkler Room	TNC108HAK6ZM	TNA-9-6-18-2A-R2	1	0	Rare	9/12/2018	0.015	0.01	1.3	0.741
2	1	Teaneck	Armory	9/6/2018	9:36	A	B	Basement Spigot in Sprinkler Room	TNC108HAK6ZM	TNA-9-6-18-2B-R2	2	1	Rare	9/12/2018	0.015	0.002	1.3	0.745
2	1	Westfield	FMS	9/6/2018	11:31	B	1	Sink by washer FMS	DBMZHS6M6PAA	WD-9-6-18-1A-R2	1	0	Rare	9/13/2018	0.015	0.002	1.3	0.8
2	1	Westfield	FMS	9/6/2018	11:35	B	1	Sink by washer FMS	DBMZHS6M6PAA	WD-9-6-18-1B-R2	2	5	Rare	9/13/2018	0.015	<0.002	1.3	0.8
2	1	Westfield	FMS	9/6/2018	11:38	B	1	FMS Fountain by Sink and Laundry	KIY5F7UFZ26Q	WD-9-6-18-2A-R2	1	0	Rare	9/13/2018	0.015	<0.002	1.3	0.2
2	1	Westfield	FMS	9/6/2018	11:43	B	1	FMS Fountain by Sink and Laundry	KIY5F7UFZ26Q	WD-9-6-18-2B-R2	2	5	Rare	9/13/2018	0.015	<0.002	1.3	<0.04
2	1	Westfield	FMS	9/6/2018	11:45	B	1	FMS Men's Bathroom Spigot	QFKRI1YYAKOD	WD-9-6-18-3A-R2	1	0	Weekly	9/13/2018	0.015	<0.002	1.3	0.8
2	1	Westfield	FMS	9/6/2018	11:46	B	1	FMS Men's Bathroom Spigot	QFKRI1YYAKOD	WD-9-6-18-3B-R2	2	1	Weekly	9/13/2018	0.015	<0.002	1.3	0.6
2	1	Westfield	Armory	9/6/2018	12:02	A	B	Bar Sink	A90F16RP25HQ	WD-9-6-18-4A-R2	1	0	Rare	9/13/2018	0.015	<0.002	1.3	4
2	1	Westfield	Armory	9/6/2018	12:05	A	B	Bar Sink	A90F16RP25HQ	WD-9-6-18-4B-R2	2	5	Rare	9/13/2018	0.015	<0.002	1.3	0.1
2	1	Westfield	Armory	9/6/2018	12:15	A	1	Boiler Room Spigot	H8A48C6P1A5	WD-9-6-18-5A-R2	1	0	Rare	9/13/2018	0.015	0.016	1.3	2.6
2	1	Westfield	Armory	9/6/2018	12:15	A	1	Boiler Room Spigot	H8A48C6P1A5	WD-9-6-18-5B-R2	2	1	Rare	9/13/2018	0.015	0.005	1.3	0.3
2	1	Woodbridge	Armory	9/6/2018	13:11	A	1	Water Fountain	S8T11S3V2LX	WBE-9-6-18-1A-R2	1	0	Rare	9/12/2018	0.015	0.002	1.3	0.749
2	1	Woodbridge	Armory	9/6/2018	13:16	A	1	Water Fountain	S8T11S3V2LX	WBE-9-6-18-1B-R2	2	5	Rare	9/12/2018	0.015	<0.002	1.3	0.759
2	1	Woodbridge	Armory	9/6/2018	13:29	A	1	Right Kitchen Sink	V89G12FC8Z1	WBE-9-6-18-2A-R2	1	0	Weekly	9/12/2018	0.015	0.226	1.3	0.809
2	1	Woodbridge	Armory	9/6/2018	13:31	A	1	Men's Room	PRGS845DYL9	WBE-9-6-18-3A-R2	1	0	Daily	9/12/2018	0.015	<0.002	1.3	0.844
2	1	Woodbridge	Armory	9/6/2018	13:34	A	1	Right Kitchen Sink	V89G12FC8Z1	WBE-9-6-18-2B-R2	2	5	Weekly	9/12/2018	0.015	<0.002	1.3	0.824
2	1	Woodbridge	Armory	9/6/2018	13:36	A	1	Men's Room	PRGS845DYL9	WBE-9-6-18-3B-R2	2	5	Daily	9/12/2018	0.015	<0.002	1.3	0.848
2	1	Woodbridge	Armory	9/6/2018	13:43	A	1	Women's room	XLH846PHLXX	WBE-9-6-18-4A-R2	1	0	Daily	9/12/2018	0.015	<0.002	1.3	0.851
2	1	Woodbridge	Armory	9/6/2018	13:48	A	1	Women's room	XLH846PHLXX	WBE-9-6-18-4B-R2	2	5	Daily	9/12/2018	0.015	<0.002	1.3	0.855
2	1	Woodstown	Armory	9/4/2018	10:24	A	1	Right Kitchen Sink by Wall	LU62FC2A1LM	WN-9-4-18-1A-R2	1	0	Not Used	9/14/2018	0.015	<0.002	1.3	0.4

2	1	Woodstown	Armory	9/4/2018	10:29	A	1	Right Kitchen Sink by Wall	LU62FCJZAILM	WN-9-4-18-1B-R2	2	5	Not Used	9/14/2018	0.015	0.065	1.3	1.5
2	1	Woodstown	Armory	9/4/2018	10:34	A	1	Boiler Room Main	MFFFT8IA2W82	WN-9-4-18-2A-R2	1	0	Daily	9/14/2018	0.015	0.014	1.3	0.1
2	1	Woodstown	Armory	9/4/2018	10:34	A	1	Boiler Room Main	MFFFT8IA2W82	WN-9-4-18-2B-R2	2	0	Daily	9/14/2018	0.015	0.117	1.3	0.5
3	1	Woodstown	Armory	6/4/2019	10:35	A	1	New Water Fountain	1X4G4Y8XDGZ	WN-6-4-19-3A	1	0	Daily	6/7/2019	0.015	<0.002	1.3	<0.04
3	1	Woodstown	Armory	6/4/2019	10:41	A	1	New Water Fountain	1X4G4Y8XDGZ	WN-6-4-19-3B	2	6	Daily	6/7/2019	0.015	<0.002	1.3	<0.04
3	1	Atlantic City	Armory	6/4/2019	8:11	A	1	New Water Fountain - 1st floor hallway	4IGYFSHKL88E	AY-6-4-19-3A	1	0	Daily	6/7/2019	0.015	<0.002	1.3	<0.04
3	1	Atlantic City	Armory	6/4/2019	8:16	A	1	New Water Fountain - 1st floor hallway	4IGYFSHKL88E	AY-6-4-19-3B	2	5	Daily	6/7/2019	0.015	<0.002	1.3	<0.04
3	1	Atlantic City	Armory	6/4/2019	8:17	A	1	New Water Fountain - gymnasium	PFSI82N17ZW1	AY-6-4-19-4A	1	0	Daily	6/7/2019	0.015	<0.002	1.3	<0.04
3	1	Atlantic City	Armory	6/4/2019	8:22	A	1	New Water Fountain - gymnasium	PFSI82N17ZW1	AY-6-4-19-4B	2	5	Daily	6/7/2019	0.015	<0.002	1.3	<0.04
3	1	Atlantic City	Armory	6/4/2019	8:32	A	2	New Water Fountain - 2nd floor hallway	73100D0XTKUA	AY-6-4-19-5A	1	0	Daily	6/7/2019	0.015	<0.002	1.3	<0.04
3	1	Atlantic City	Armory	6/4/2019	8:37	A	2	New Water Fountain - 2nd floor hallway	73100D0XTKUA	AY-6-4-19-5B	2	5	Daily	6/7/2019	0.015	0.015	1.3	<0.04
3	2	Lawrenceville	FMS	6/25/2019	10:12	E	1	Breakroom Water Fountain	514924FY1Y6Z	LVF-6-25-19-4A	1	0	Weekly	7/3/2019	0.015	<0.002	1.3	<0.04
3	2	Lawrenceville	FMS	6/25/2019	10:17	E	1	Breakroom Water Fountain	514924FY1Y6Z	LVF-6-25-19-4B	2	5	Weekly	7/3/2019	0.015	<0.002	1.3	<0.04
3	2	Westfield	FMS	6/26/2019	9:20	B	1	New Bottle Filling Station	F1YDXCM1JIUJ	WD-6-26-19-6A	1	0	Daily	7/3/2019	0.015	<0.002	1.3	<0.04
3	2	Westfield	FMS	6/26/2019	9:25	B	1	New Bottle Filling Station	F1YDXCM1JIUJ	WD-6-26-19-6B	2	5	Daily	7/3/2019	0.015	<0.002	1.3	<0.04
3	3	Westfield	Armory	7/17/2019	9:34	A	1	Hallway Bottle Filling Station	2M2P81R007NP	WD-7-17-19-7A	1	0	Daily	7/29/2019	0.015	<0.002	1.3	<0.04
3	3	Westfield	Armory	7/17/2019	9:39	A	1	Hallway Bottle Filling Station	2M2P81R007NP	WD-7-17-19-7B	2	5	Daily	7/29/2019	0.015	<0.002	1.3	<0.04
3	3	Westfield	Armory	7/17/2019	9:46	A	2	2nd Floor Bottle Filling Station	0UWF8JT2GX0G	WD-7-17-19-8A	1	0	Daily	7/29/2019	0.015	<0.002	1.3	<0.04
3	3	Westfield	Armory	7/17/2019	9:51	A	2	2nd Floor Bottle Filling Station	0UWF8JT2GX0G	WD-7-17-19-8B	2	2*	Daily	7/29/2019	0.015	<0.002	1.3	<0.04
3	4	Hackettstown	Armory	8/13/2019	10:05	A	1	Bottle Filling Station By Mens Room	DIUPSXE3VKFZ	HACK-8-13-19-6A	1	0	WEEKLY	8/15/2019	0.015	<0.002	1.3	<0.04
3	4	Hackettstown	Armory	8/13/2019	10:10	A	1	Bottle Filling Station By Mens Room	DIUPSXE3VKFZ	HACK-8-13-19-6B	2	5	WEEKLY	8/15/2019	0.015	<0.002	1.3	<0.04
3	4	Hackettstown	Armory	8/13/2019	10:11	A	1	Bottle Filling Station By Kitchen	WFAQGEDQ9H80	HACK-8-13-19-7A	1	0	MONTHLY	8/15/2019	0.015	<0.002	1.3	0.05
3	4	Hackettstown	Armory	8/13/2019	10:20*	A	1	Bottle Filling Station By Kitchen	WFAQGEDQ9H80	HACK-8-13-19-7B	2	9	MONTHLY	8/15/2019	0.015	<0.002	1.3	<0.04
3	5	Woodbridge	Armory	8/15/2019	9:48	A	1	Bottle Filling Station By Womens Bathroom	Y191QP651LY8	WBE-8-15-19-5A	1	0	DAILY	8/19/2019	0.015	<0.002	1.3	<0.04
3	5	Woodbridge	Armory	8/15/2019	9:53	A	1	Bottle Filling Station By Womens Bathroom	Y191QP651LY8	WBE-8-15-19-5B	2	5	DAILY	8/19/2019	0.015	<0.002	1.3	<0.04
3	6	Somerset	Armory	8/27/2019	8:53	A	1	Bottle Filling Station-Drill Floor	ZHTNMP5QE97B	ST-8-27-19-4A	1	0	DAILY	8/30/2019 (Pb), 9/3/2019 (Cu)	0.015	<0.002	1.3	<0.04
3	6	Somerset	Armory	8/27/2019	9:00	A	1	Bottle Filling Station-Drill Floor	ZHTNMP5QE97B	ST-8-27-19-4B	2	7	DAILY	8/30/2019 (Pb), 9/3/2019 (Cu)	0.015	<0.002	1.3	<0.04
3	6	Woodbridge	Armory	8/19/2019	7:30	A	1	Bottle Filling Station By Womens Bathroom	Y191QP651LY8	WBE-8-19-19-6A	1	0	DAILY	8/30/2019 (Pb), 9/3/2019 (Cu)	0.015	<0.002	1.3	<0.04
3	6	Woodbridge	Armory	8/19/2019	7:35	A	1	Bottle Filling Station By Womens Bathroom	Y191QP651LY8	WBE-8-19-19-6B	2	5	DAILY	8/30/2019 (Pb), 9/3/2019 (Cu)	0.015	<0.002	1.3	<0.04
3	6	Atlantic City	Armory	8/27/2019	7:52	A	2	New Water Fountain - 2nd floor hallway	73100D0XTKUA	AY-8-27-19-5A	1	0	DAILY	8/30/2019 (Pb), 9/3/2019 (Cu)	0.015	<0.002	1.3	<0.04
3	6	Atlantic City	Armory	8/27/2019	7:59	A	2	New Water Fountain - 2nd floor hallway	73100D0XTKUA	AY-8-27-19-5B	2	5.5	DAILY	8/30/2019 (Pb), 9/3/2019 (Cu)	0.015	<0.002	1.3	<0.04
3	6	Dover	Armory	8/28/2019	9:32	A	1	Bottle Filling Station Drill Floor	DTXUNDFG97LM	DR-8-28-19-4A	1	0	MONTHLY	8/30/2019 (Pb), 9/3/2019 (Cu)	0.015	<0.002	1.3	<0.04
3	6	Dover	Armory	8/28/2019	9:37	A	1	Bottle Filling Station Drill Floor	DTXUNDFG97LM	DR-8-28-19-4B	2	5	MONTHLY	8/30/2019 (Pb), 9/3/2019 (Cu)	0.015	<0.002	1.3	<0.04
3	6	Dover	Armory	8/28/2019	9:43	A	2	Bottle Filling Station At Top Of Stairs	MXFYZINOMDFC	DR-8-28-19-5A	1	0	MONTHLY	8/30/2019 (Pb), 9/3/2019 (Cu)	0.015	<0.002	1.3	<0.04
3	6	Dover	Armory	8/28/2019	9:48	A	2	Bottle Filling Station At Top Of Stairs	MXFYZINOMDFC	DR-8-28-19-5B	2	5	MONTHLY	8/30/2019 (Pb), 9/3/2019 (Cu)	0.015	<0.002	1.3	<0.04
3	7	Teaneck	Armory	9/5/2019	9:36	A	1	Bottle Filling Station Drill Floor	K0U7QI4HG9B	TNA-9-5-19-3A	1	0	DAILY	9/18/2019	0.015	<0.002	1.3	<0.04
3	7	Teaneck	Armory	9/5/2019	9:46	A	1	Bottle Filling Station Drill Floor	K0U7QI4HG9B	TNA-9-5-19-3B	2	10	DAILY	9/18/2019	0.015	<0.002	1.3	<0.04
3	7	Newark	Armory	9/5/2019	10:36	A	1	Bottle Filling Station By Womens Bathroom	NS24HZM3DZU	NK-9-5-19-3A	1	0	RARELY	9/18/2019	0.015	<0.002	1.3	<0.04
3	7	Newark	Armory	9/5/2019	10:41	A	1	Bottle Filling Station By Womens Bathroom	NS24HZM3DZU	NK-9-5-19-3B	2	5	RARELY	9/18/2019	0.015	<0.002	1.3	<0.04
3	7	Newark	Armory	9/5/2019	10:47	A	2	Bottle Filling Station By Bathroom	UNHML4XTGJSC	NK-9-5-19-4A	1	0	RARELY	9/18/2019	0.015	<0.002	1.3	<0.04
3	7	Newark	Armory	9/5/2019	10:52	A	2	Bottle Filling Station By Bathroom	UNHML4XTGJSC	NK-9-5-19-4B	2	5	RARELY	9/18/2019	0.015	<0.002	1.3	<0.04
3	7	Woodstown	Armory	9/11/2019	9:52	A	1	Right Kitchen Sink by Wall	LU62FCJZAILM	WN-9-11-19-4A	1	0	RARELY	9/18/2019	0.015	0.002	1.3	0.06
3	7	Woodstown	Armory	9/11/2019	9:57	A	1	Right Kitchen Sink by Wall	LU62FCJZAILM	WN-9-11-19-4B	2	5	RARELY	9/18/2019	0.015	<0.002	1.3	0.07
3	7	Woodstown	Armory	9/11/2019	9:53	A	1	Left Kitchin Sink By Door	EAC2DSBJUNA	WN-9-11-19-5A	1	0	RARELY	9/18/2019	0.015	0.002	1.3	0.1
3	7	Woodstown	Armory	9/11/2019	9:58	A	1	Left Kitchin Sink By Door	EAC2DSBJUNA	WN-9-11-19-5B	2	5	RARELY	9/18/2019	0.015	<0.002	1.3	1.8
3	7	Woodstown	Armory	9/11/2019	10:04A	A	1	Boiler Room Main	MFFFT8IA2W82	WN-9-11-19-6A	1	0	RARELY	9/18/2019	0.015	0.015	1.3	0.4
3	7	Woodstown	Armory	9/11/2019	10:04B	A	1	Boiler Room Main	MFFFT8IA2W82	WN-9-11-19-6B	2	0	RARELY	9/18/2019	0.015	<0.002	1.3	0.1
3	7	Woodstown	Armory	9/11/2019	10:14	A	1	Boiler Room Main	MFFFT8IA2W82	WN-9-11-19-6C	3	10	RARELY	9/18/2019	0.015	<0.002	1.3	0.1
3	7	Woodstown	Armory	9/11/2019	10:20	A	1	Mens Bathroom Sink	DBQJ469BK7JJ	WN-9-11-19-7A	1	0	DAILY	9/18/2019	0.015	<0.002	1.3	0.1
3	7	Woodstown	Armory	9/11/2019	10:25	A	1	Mens Bathroom Sink	DBQJ469BK7JJ	WN-9-11-19-7B	2	5	DAILY	9/18/2019	0.015	<0.002	1.3	0.1
3	7	Woodstown	Armory	9/11/2019	10:29	A	1	Utility Room Sink	UTS1696A45G	WN-9-11-19-8A	1	0	RARELY	9/18/2019	0.015	<0.002	1.3	0.1
3	7	Woodstown	Armory	9/11/2019	10:34	A	1	Utility Room Sink	UTS1696A45G	WN-9-11-19-8B	2	5	RARELY	9/18/2019	0.015	<0.002	1.3	0.1
3	7	Woodstown	Armory	9/11/2019	10:36	A	1	Bottle Filling Station By Womens Bathroom	1X4G4Y8XDGZ	WN-9-11-19-9A	1	0	DAILY	9/18/2019	0.015	<0.002	1.3	0.1
3	7	Woodstown	Armory	9/11/2019	10:41	A	1	Bottle Filling Station By Womens Bathroom	1X4G4Y8XDGZ	WN-9-11-19-9B	2	5	DAILY	9/18/2019	0.015	<0.002	1.3	0.04
3	7	Woodstown	Armory	9/11/2019	10:47	A	1	Womens Bathroom Sink	OF56WFW6MXFQ	WN-9-11-19-10A	1	0	WEEKLY	9/18/2019	0.015	<0.002	1.3	<0.04
3	7	Woodstown	Armory	9/11/2019	10:52	A	1	Womens Bathroom Sink	OF56WFW6MXFQ	WN-9-11-19-10B	2	5	WEEKLY	9/18/2019	0.015	<0.002	1.3	0.07



## **Appendix C**

Photographs of Round 3 Sample Locations

**Site:** Atlantic City

**Date:** 6/4/2019

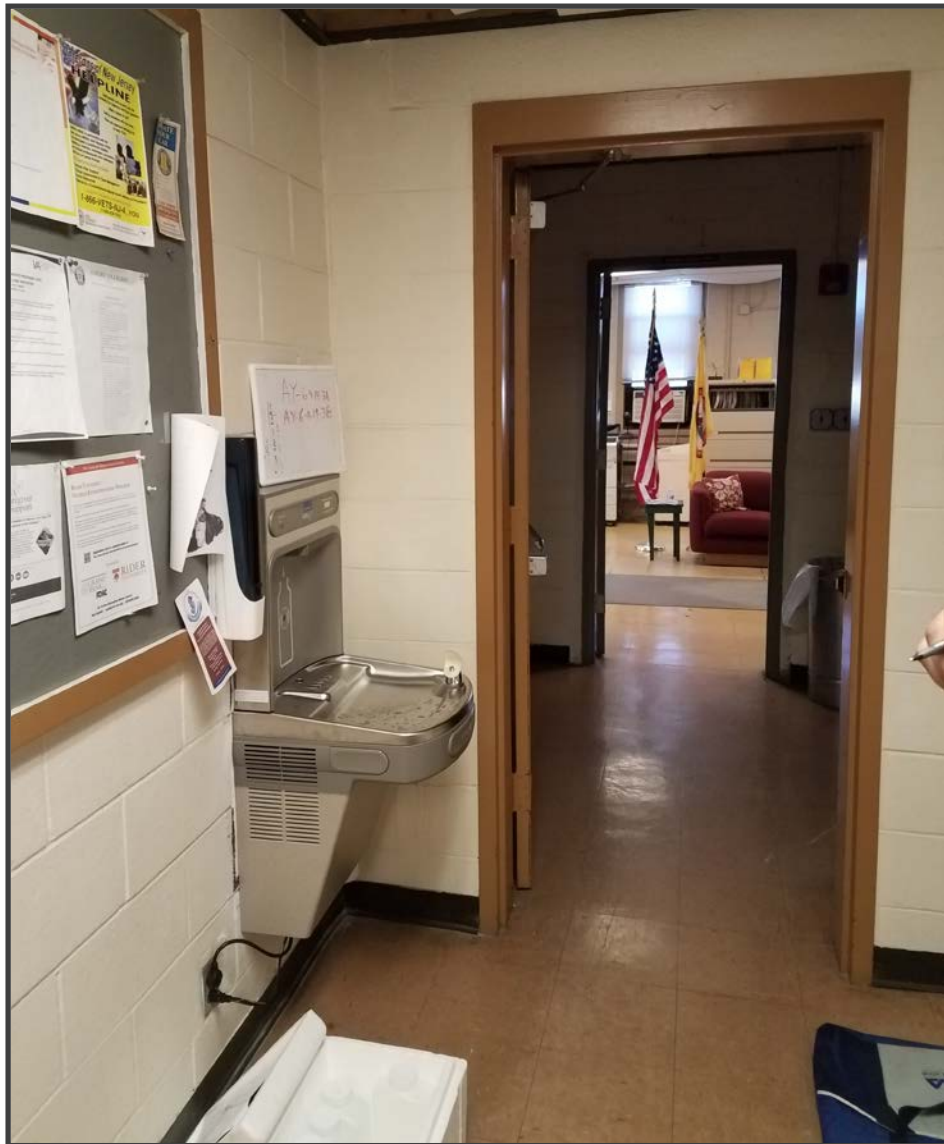
**Faucet ID:** 4JGYFSHKL88E

**Sample ID:** AY-6-14-19-3A & AY-6-14-19-3B

**Building:** Armory

**Floor:** 1

**Faucet Description:** New Bottle Filling Station – 1<sup>st</sup> Floor Hallway



**Site:** Atlantic City

**Date:** 6/4/2019

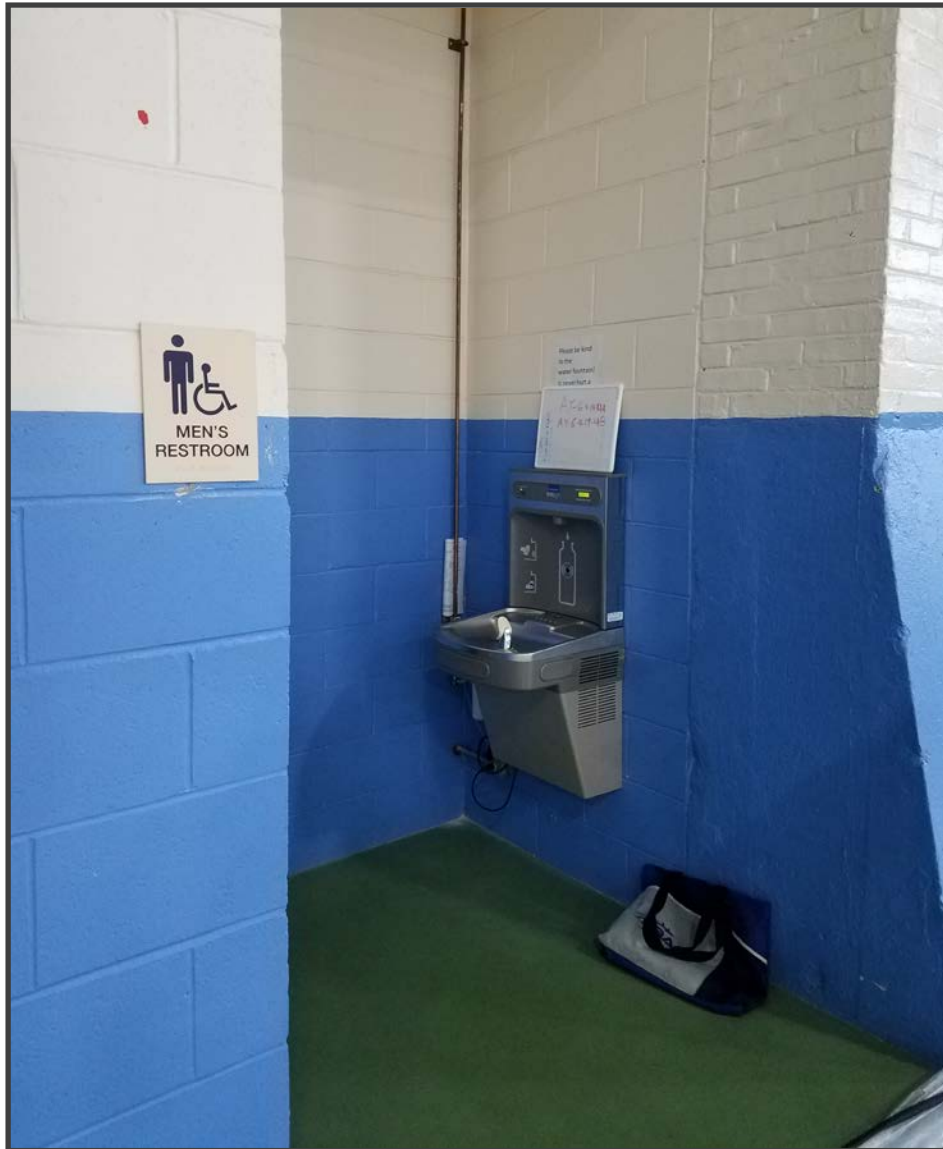
**Faucet ID:** PFSI82N17ZW1

**Sample ID:** AY-6-14-19-4A & AY-6-14-19-4B

**Building:** Armory

**Floor:** 1

**Faucet Description:** New Bottle Filling Station – Gymnasium



**Site:** Atlantic City

**Date:** 6/4/2019 & 8/27/2019

**Faucet ID:** 73100D0XTKUA

**Sample ID:** AY-6-14-19-5A, AY-6-14-19-5B, AY-8-27-2019-5A, AY-8-27-2019-5B

**Building:** Armory

**Floor:** 2

**Faucet Description:** New Bottle Filling Station – 2<sup>nd</sup> Floor Hallway



**Site:** Dover

**Date:** 8/28/2019

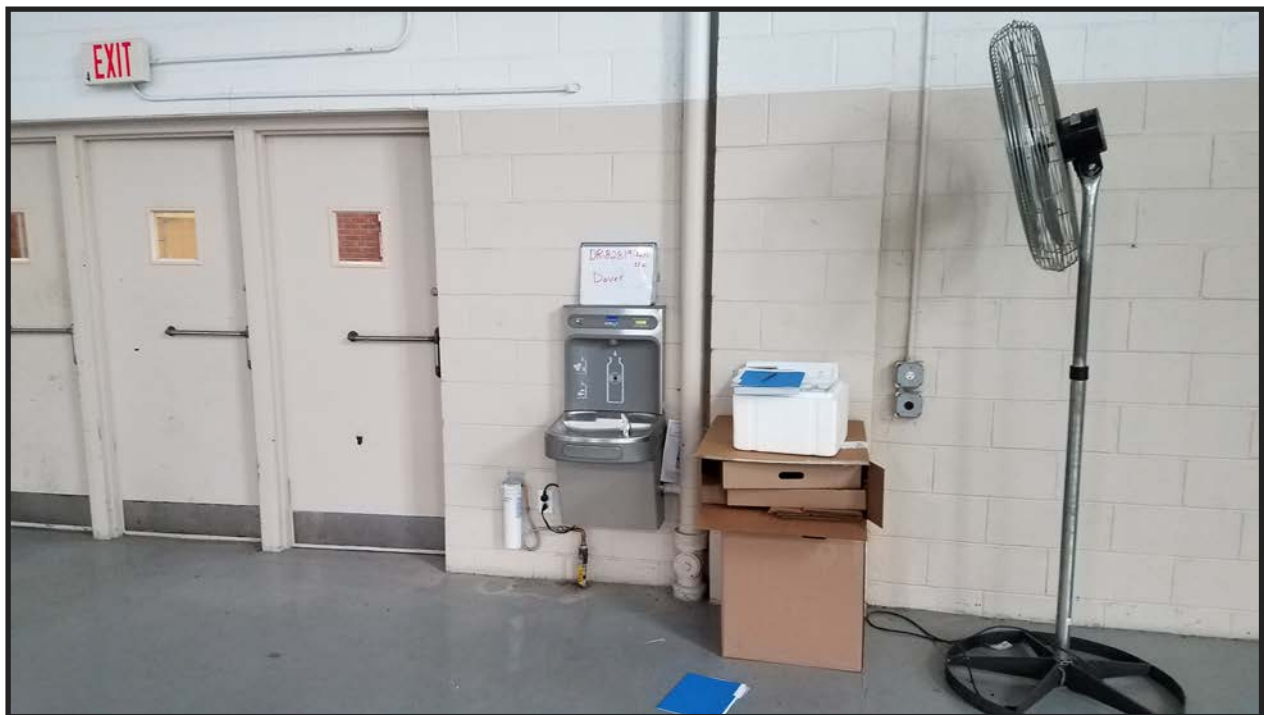
**Faucet ID:** DTXUNDFG97LM

**Sample ID:** DR-8-28-19-4A & DR-8-28-19-4B

**Building:** Armory

**Floor:** 1

**Faucet Description:** 1<sup>st</sup> Floor Bottle Filling Station – Drill Floor



**Site:** Dover

**Date:** 8/28/2019

**Faucet ID:** MXYZINOMDFC

**Sample ID:** DR-8-28-19-5A & DR-8-28-19-5B

**Building:** Armory

**Floor:** 2

**Faucet Description:** 2<sup>nd</sup> Floor Bottle Filling Station At Top Of Stairs



**Site:** Hackettstown

**Date:** 8/13/2019

**Faucet ID:** DIUP5XE3VKFZ

**Sample ID:** HACK-8-13-19-6A & HACK-8-13-19-6B

**Building:** Armory

**Floor:** 1

**Faucet Description:** Bottle Filling Station By Men's Room



**Site:** Hackettstown

**Date:** 8/13/2019

**Faucet ID:** WFAQGEDQ9H80

**Sample ID:** HACK-8-13-19-7A & HACK-8-13-19-7B

**Building:** Armory

**Floor:** 1

**Faucet Description:** Bottle Filling Station By Kitchen





Site: Lawrenceville

Date: 6/25/2019

Faucet ID: 514924F1YI6Z

Sample ID: LVF-6-25-19-4A & LVF-6-25-19-4B

Building: FMS

Floor: 1

Faucet Description: Breakroom Water Fountain



**Site:** Newark

**Date:** 9/5/2019

**Faucet ID:** N5Z4HZ0M3DZU

**Sample ID:** NK-9-5-19-3A & NK-9-5-19-3B

**Building:** Armory

**Floor:** 1

**Faucet Description:** Bottle Filling Station By Women's Bathroom



**Site:** Newark

**Date:** 9/5/2019

**Faucet ID:** UNHML4XTGJSC

**Sample ID:** NK-9-5-19-4A & NK-9-5-19-4B

**Building:** Armory

**Floor:** 2

**Faucet Description:** Bottle Filling Station By Bathroom



**Site:** Somerset

**Date:** 8/27/2019

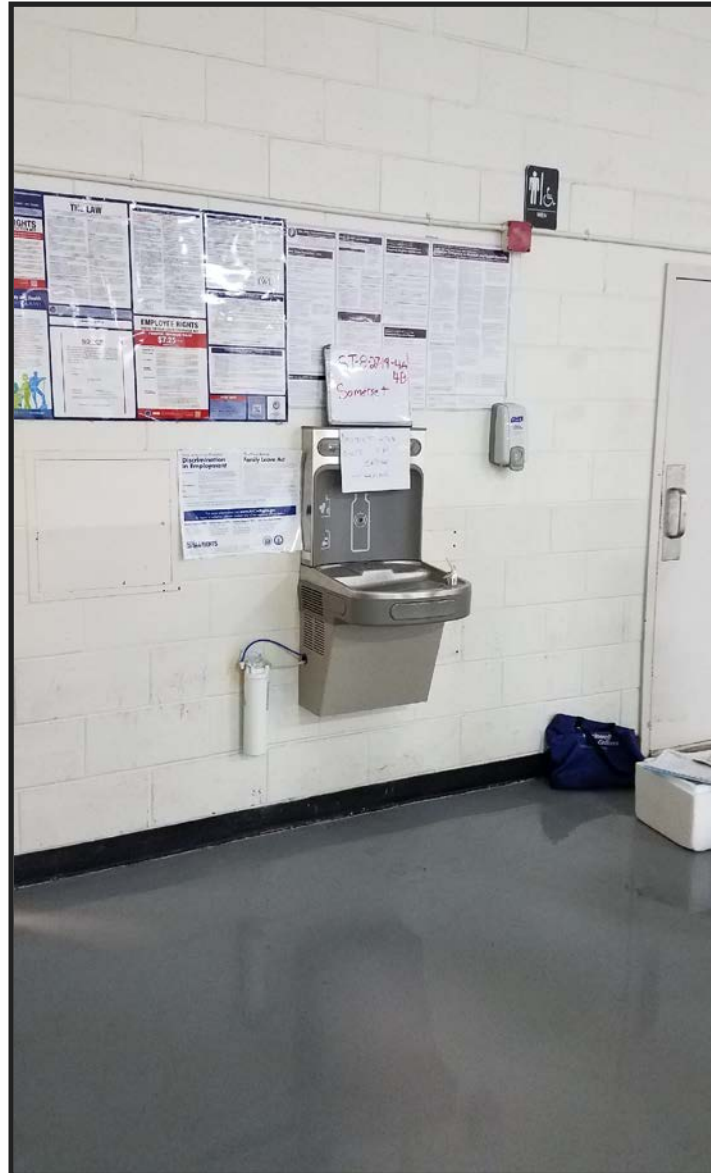
**Faucet ID:** ZHTNMP5QE97B

**Sample ID:** ST-8-27-19-4A & ST-8-27-19-4B

**Building:** Armory

**Floor:** 1

**Faucet Description:** Bottle Filling Station – Drill Floor



**Site:** Teaneck

**Date:** 9/5/2019

**Faucet ID:** K0U7QI4HGH9B

**Sample ID:** TNA-9-5-19-3A & TNA-9-5-19-3B

**Building:** Armory

**Floor:** 1

**Faucet Description:** Bottle Filling Station – Drill Floor



**Site:** Westfield

**Date:** 6/26/2019

**Faucet ID:** FJYDXCM1JUJ

**Sample ID:** WD-6-26-19-6A & WD-6-26-19-6B

**Building:** FMS

**Floor:** 1

**Faucet Description:** Bottle Filling Station

Photo Not Available

**Site:** Westfield

**Date:** 7/17/2019

**Faucet ID:** 2MZPB1R007NP

**Sample ID:** WD-7-17-19-7A & WD-7-17-19-7B

**Building:** Armory

**Floor:** 1

**Faucet Description:** Hallway Bottle Filling Station



**Site:** Westfield

**Date:** 7/17/2019

**Faucet ID:** OUWF8JT2GX0G

**Sample ID:** WD-7-17-19-8A & WD-7-17-19-8B

**Building:** Armory

**Floor:** 2

**Faucet Description:** 2<sup>ND</sup> Floor Bottle Filling Station





**Site:** Woodbridge

**Date:** 8/15/2019 & 8/19/2019

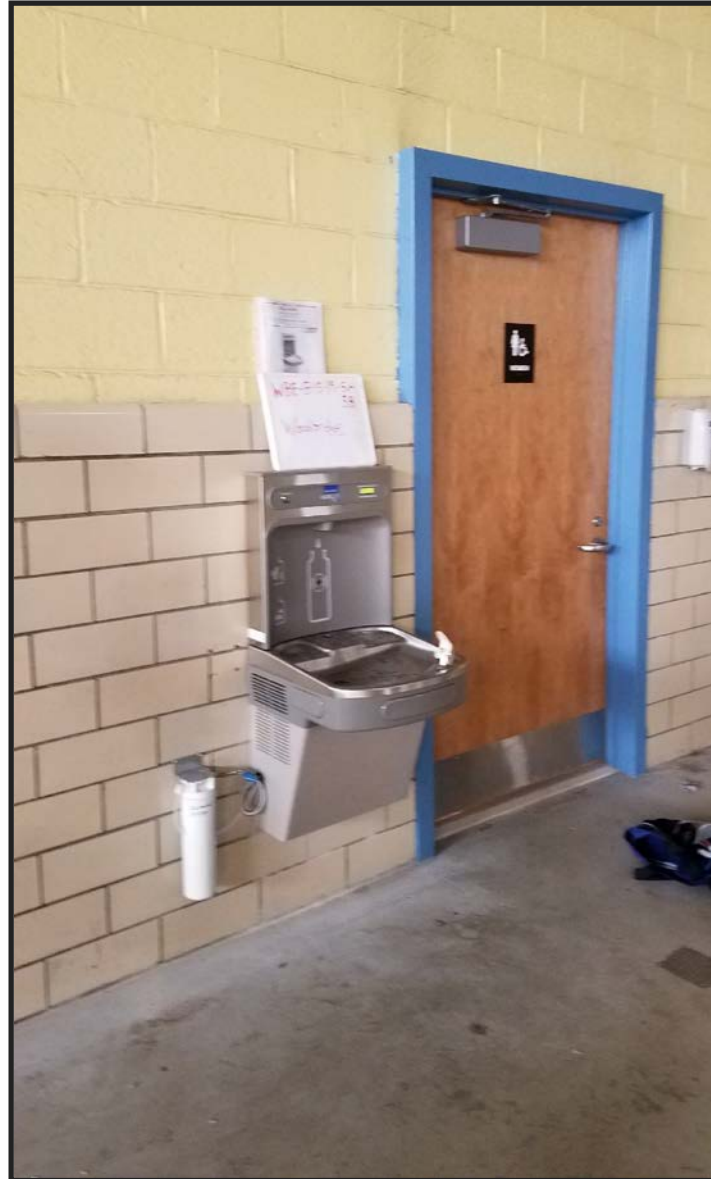
**Faucet ID:** YT91QP651LY8

**Sample ID:** WBE-8-15-19-5A, WBE-8-15-19-5B, WBE-8-19-19-6A, & WBE-8-19-19-6B

**Building:** Armory

**Floor:** 1

**Faucet Description:** Bottle Filling Station By Women's Bathroom



**Site:** Woodstown

**Date:** 6/4/2019 & 9/11/2019

**Faucet ID:** 1X4GJ4Y8XDGZ

**Sample ID:** WN-6-4-19-3A, WN-6-4-19-3B, WN-9-11-19-9A, & WN-9-11-9B

**Building:** Armory

**Floor:** 1

**Faucet Description:** Bottle Filling Station By Women's Bathroom



**Site:** Woodstown

**Date:** 9/11/2019

**Faucet ID:** LU62FCJZAJLM

**Sample ID:** WN-9-11-19-4A & WN-9-11-19-4B

**Building:** Armory

**Floor:** 1

**Faucet Description:** Right Kitchen Sink By Wall



**Site:** Woodstown

**Date:** 9/11/2019

**Faucet ID:** EA2CDSBJ3UNA

**Sample ID:** WN-9-11-19-5A & WN-9-11-19-5B

**Building:** Armory

**Floor:** 1

**Faucet Description:** Left Kitchen Sink By Door



**Site:** Woodstown

**Date:** 9/11/2019

**Faucet ID:** MFPFT8IA2W82

**Sample ID:** WN-9-11-19-6A, WN-9-11-19-6B, & WN-9-11-19-6C

**Building:** Armory

**Floor:** 1

**Faucet Description:** Boiler Room Main Spigot



**Site:** Woodstown

**Date:** 9/11/2019

**Faucet ID:** D8QJ469BK7JJ

**Sample ID:** WN-9-11-19-7A & WN-9-11-19-7B

**Building:** Armory

**Floor:** 1

**Faucet Description:** Men's Bathroom Sink



**Site:** Woodstown

**Date:** 9/11/2019

**Faucet ID:** UT51696AI45G

**Sample ID:** WN-9-11-19-8A & WN-9-11-19-8B

**Building:** Armory

**Floor:** 1

**Faucet Description:** Utility Room Sink



**Site:** Woodstown

**Date:** 9/11/2019

**Faucet ID:** OFS6WFW6MXFQ

**Sample ID:** WN-9-11-19-10A & WN-9-11-19-10B

**Building:** Armory

**Floor:** 1

**Faucet Description:** Women's Bathroom Sink





## **Appendix D**

Sample Collection Data Sheet and Chain of Custody Form



J.R. Henderson Labs, INC  
 123 Seaman Ave  
 Beachwood, NJ 08722  
 732-341-1211  
 Fax: 732-505-1658

### Chain of Custody

**Customer Name:** NJARNG - Chuck Appleby  
**Customer Address:** 101 Eggerts Crossing Road, Lawrenceville, NJ 08648  
**Phone #:** 1-609-530-7135  
**Site Name & Address:**

**Type of Sample**

Aq= Aqueous                      TB= Trip Blank  
 S= Soil                              FB= Field Blank  
 MW= Monitoring Well          WW= Waste Water

Sample ID #	Type	Date	Time	Location	#of Bottles	Bacteria-TC	Bacteria-FC	B & M # 3	94-1	Nitrate	Secondaries	Inorganics	PB & CU	Iron	Manganese	pH	VOC	COD	BOD	TSS	TDS	Oil & Grease	Temperature	Diss. Oxygen
	Aq				1								X											
	Aq				1								X											
	Aq				1								X											
	Aq				1								X											
	Aq				1								X											
	Aq				1								X											
	Aq				1								X											
	Aq				1								X											
	Aq				1								X											
	Aq				1								X											

Relinquished By:	Received By:	Time & Date:	Cooler Temp:
Relinquished By:	Received By:	Time & Date:	Preservatives: As per NJFSM 8/2005
Relinquished By:	Received By:	Time & Date:	Comments: