

Water Fountain Inventory  
 Date: 1/15/2019  
 Done By: Laurel Klein  
 Armory Name: Lodi  
 Armorer: Frank Martinez

| Site | Location | Floor | Room    | Equipment Type | Make                   | Model               | Serial Number | Refrigerant | Code With Color (Index and totals to right) | GWP Level | Amount of Refrigerant (lbs/oz) |
|------|----------|-------|---------|----------------|------------------------|---------------------|---------------|-------------|---|-----------|--------------------------------|
| Lodi | ARMORY   | 1     | 117     | WATER COOLER   | Halsey Taylor          | G8MAKV D            | 60227926      | R134A       | R134A                                       | Medium    | 1.6 oz                         |
|      | ARMORY   | 1     | 144     | WATER COOLER   | Oasis                  | BPD1SHS-H203        |               | R134A       | R134A                                       | Medium    | 1.3 oz                         |
|      | ARMORY   | 1     | 122     | WATER COOLER   | Oasis                  | BPD1SHS-H203        | 1530020 033A  | R134A       | R134A                                       | Medium    | 1.3 oz                         |
|      | MVSB 2   | 1     | MVSB1-2 | WATER COOLER   | Crystal Rock           | GLE D2WHW 18C       | D60698052     | R134A       | R134A                                       | Medium    | 1 oz                           |
|      | MVSB 2   | 1     | MVSB1-1 | WATER COOLER   | Drinking Water Coolers | Visions White-VW210 | SA09C01 619   | R134A       | R134A                                       | Medium    | 35 g                           |
|      | MVSB 1   | 1     | MVSB1-6 | WATER COOLER   | Oasis                  | BPD1SHS-H203        | 63762477      | R134A       | R134A                                       | Medium    | 1.3 oz                         |

| Color Code Index   |                   |
|--|-------------------|
|  | Totals            |
| Class 1  | 0                 |
| Class 2  | 0                 |
| Missing Code   | 0                 |
|  |                   |
| GWP Level* Index   |                   |
| High   | Greater than 2500 |
| Medium   | 150-2500          |
| Low  | Less than 150     |
| <small>*Values from Linde Gas and IPCC 4th Assessment Report, 2007. Global Warming Potential (GWP) based 100 year.</small> |                   |

Lodi site maps MVSB 1 and MVSB 2 are unavailable.

No Photos Available

**Figure LI1**  
**Water Fountain Locations**  
**Lodi Armory Floor 1**

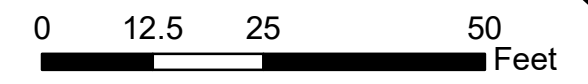
**FIRST FLOOR PLAN**  
 SCALE : 3/32" = 1' - 0"



**FIRST FLOOR**  
**TOTAL AREA :**

**Legend**

 Water Cooler



1 inch = 22 feet



**Notes:**

Floor plans georeferenced via headsup digitizing over 2015 aerial photography



|                          |
|--------------------------|
| Scale: 1 inch = 22 feet  |
| File: LI1                |
| Date: 1/21/2019          |
| Created By: Laurel Klein |

Stockton University

Water Fountain Inventory

Date: 1/15/2019  
 Done By: Laurel Klein  
 Armory Name: Morristown  
 Armorer: Collin Thomas

| Site       | Location | Floor | Room | Equipment Description | Make  | Model | Serial Number | Refrigerant | GWP Level | Amount of Refrigerant (lbs/oz) |
|------------|----------|-------|------|-----------------------|-------|-------|---------------|-------------|-----------|--------------------------------|
| Morristown | ARMORY   | 1     | 100  | Water Fountain        | Elkay | EZFS8 | 30512485      | R134A       | Medium    | 4.1oz                          |

Morristown site map for floor 1 is unavailable.

| Color Code Index |                   |
|------------------|-------------------|
|                  | Totals            |
| Class 1          | 0                 |
| Class 2          | 0                 |
| Missing Code     | 0                 |
| GWP Level* Index |                   |
| High             | Greater than 2500 |
| Medium           | 150-2500          |
| Low              | Less than 150     |

\*Values from Linde Gas and IPCC 4th Assessment Report, 2007. Global Warming Potential (GWP) based 100 year.



Morristown Armory Water Fountain

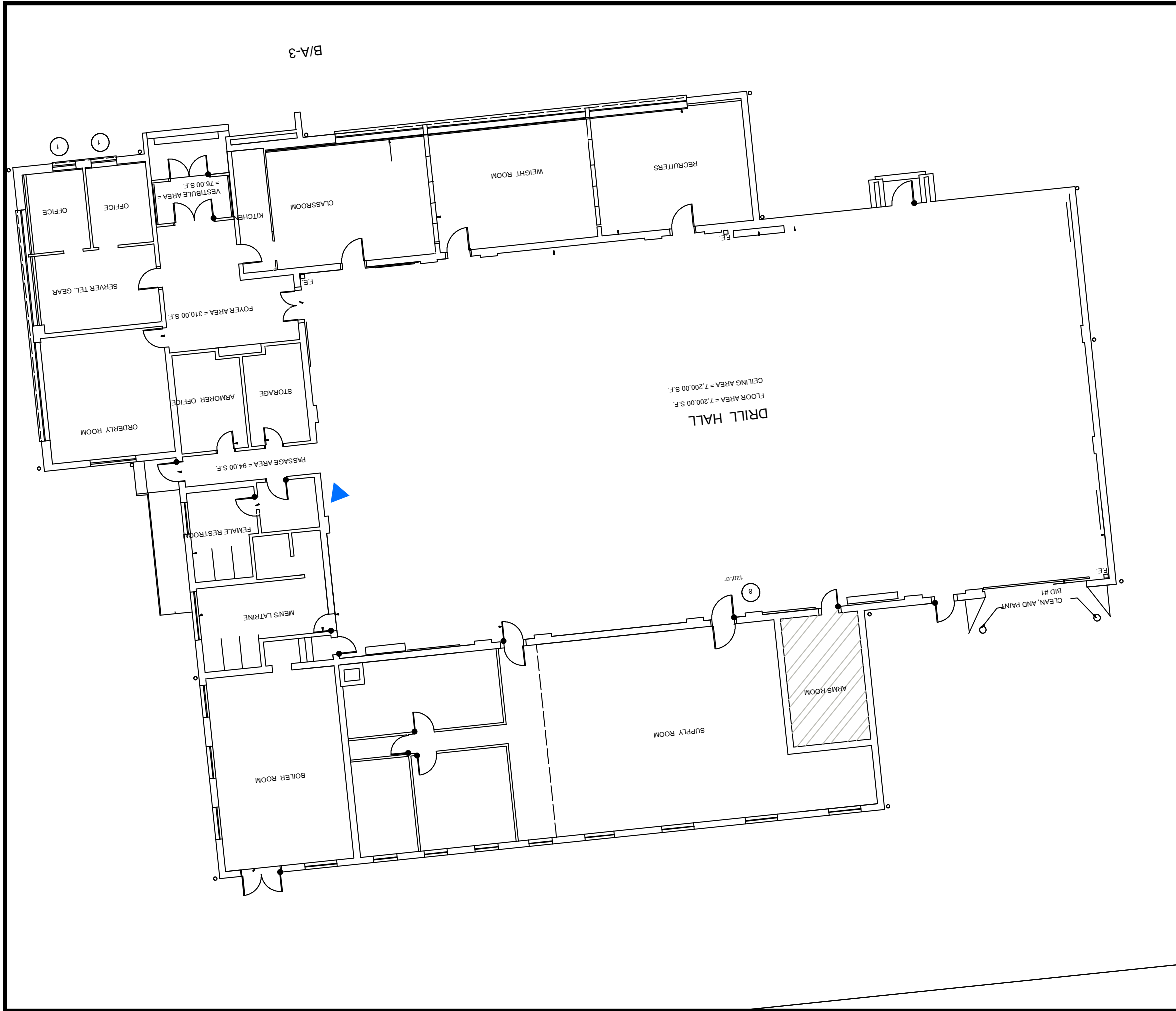
Water Fountain Inventory

Date: 1/15/2019  
 Done By: Laurel Klein  
 Armory Name: Mt. Holly  
 Armorer: Nick Torres

| Site      | Location | Floor | Room | Equipment Description | Make  | Model   | Serial Number | Refrigerant | GWP Level | Amount of Refrigerant (lbs/oz) |
|-----------|----------|-------|------|-----------------------|-------|---------|---------------|-------------|-----------|--------------------------------|
| MT. Holly | ARMORY   | 1     | 107  | WATER FOUNTAIN        | Elkay | HEW1_1H | 919779        | R134A       | Medium    | 4.38 oz                        |

| Color Code Index   |                   |
|--|-------------------|
|  | Totals            |
| Class 1  | 0                 |
| Class 2  | 0                 |
| Missing Code   | 0                 |
| GWP Level* Index   |                   |
| High   | Greater than 2500 |
| Medium   | 150-2500          |
| Low  | Less than 150     |
| <small>*Values from Linde Gas and IPCC 4th Assessment Report, 2007. Global Warming Potential (GWP) based 100 year.</small> |                   |

No Photos Available



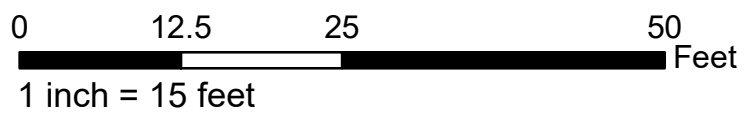
B/A-3

Figure MY1

**Water Fountain Locations  
Mount Holly Armory  
Floor 1**

**Legend**

 Water Fountain



**Notes:**

Floor plans georeferenced via headsup digitizing over 2015 aerial photography



|             |                  |
|-------------|------------------|
| Scale:      | 1 inch = 15 feet |
| File:       | Figure MY1       |
| Date:       | 1/21/2019        |
| Created By: | Laurel Klein     |

Stockton University

Water Fountain Inventory  
 Date: 1/15/2019  
 Done By: Laurel Klein  
 Armory Name: Newark  
 Armorer: Jamie Simon

| Site   | Location | Floor | Room | Equipment Description | Make          | Model    | Serial Number | Refrigerant | GWP Level | Amount of Refrigerant (lbs/oz) |
|--------|----------|-------|------|-----------------------|---------------|----------|---------------|-------------|-----------|--------------------------------|
| Newark | OMS      | 1     | 103  | WATER FOUNTAIN        | Sunroc        | NSW14    | H369994<br>D  | R12         | High      | 5.5 oz                         |
|        | ARMORY   | 1     | 113H | WATER FOUNTAIN        | Halsey Taylor | SW4AQ_1M | 81015173      | R134A       | Medium    | 3.70 oz                        |
|        | ARMORY   | 2     | Hall | WATER FOUNTAIN        | Halsey Taylor | SW4AQ_1M | 81015172      | R134A       | Medium    | 3.7 oz                         |

| Color Code Index   |                   |
|--|-------------------|
|  | Totals            |
| Class 1  | 1                 |
| Class 2  | 0                 |
| Missing Code   | 0                 |
|  |                   |
| GWP Level* Index   |                   |
| High   | Greater than 2500 |
| Medium   | 150-2500          |
| Low  | Less than 150     |
| <small>*Values from Linde Gas and IPCC 4th Assessment Report, 2007, Global Warming Potential (GWP) based 100 year.</small> |                   |

Newark site maps for floor 2 and OMS are unavailable.

No Photos Available

Figure NK1

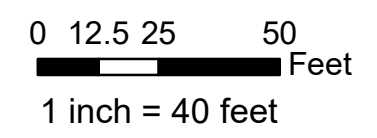
Water Fountain Locations  
Newark Armory  
Floor 1



FIRST FLOOR PLAN  
SCALE 1"=30'-0"

Legend

▲ Water Fountain



Notes:

Floor plans georeferenced via headsup digitizing over 2015 aerial photography



|                          |
|--------------------------|
| Scale: 1 inch = 40 feet  |
| File: NK1                |
| Date: 1/21/2019          |
| Created By: Laurel Klein |

Stockton University

Water Fountain Inventory  
 Date: 1/15/2019  
 Done By: Laurel Klein  
 Armory Name: Old UTES  
 Armorer: Sam Delpidio

| Site     | Location | Floor | Room | Equipment Description | Make | Model | Serial Number | Refrigerant | GWP Level | Amount of Refrigerant (lbs/oz) |
|----------|----------|-------|------|-----------------------|------|-------|---------------|-------------|-----------|--------------------------------|
| Old UTES | N/A      | N/A   | N/A  | N/A                   | N/A  | N/A   | N/A           | N/A         | N/A       | N/A                            |

| <i>Color Code Index</i>  |                   |
|--|-------------------|
|  | Totals            |
| Class 1  | 0                 |
| Class 2  | 0                 |
| Missing Code   | 0                 |
|  |                   |
| <i>GWP Level* Index</i>  |                   |
| High   | Greater than 2500 |
| Medium   | 150-2500          |
| Low  | Less than 150     |
| <small>*Values from Linde Gas and IPCC 4th Assessment Report, 2007. Global Warming Potential (GWP) based 100 year.</small> |                   |

No Photos Available

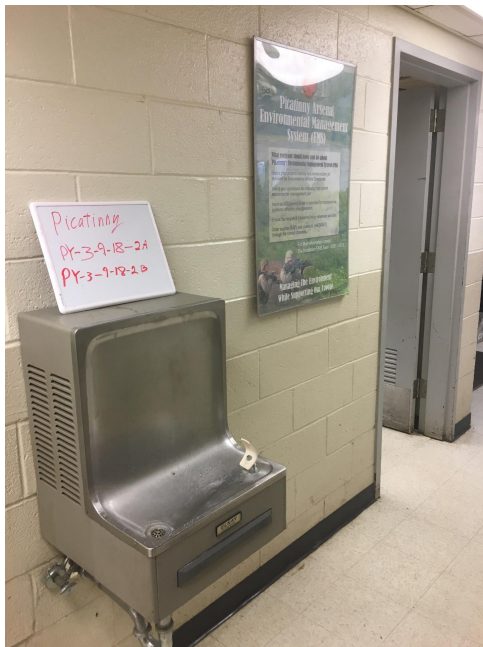


Water Fountain Inventory  
 Date: 1/15/2019  
 Done By: Laurel Klein  
 Armory Name: Picatinny  
 Armorer: Charles Rissmiller

| Site      | Location | Floor | Room | Equipment Description | Make  | Model    | Serial Number | Refrigerant | GWP Level | Amount of Refrigerant (lbs/oz) |
|-----------|----------|-------|------|-----------------------|-------|----------|---------------|-------------|-----------|--------------------------------|
| Picatinny | FMS      | 1     | 114  | Water Fountain        | Elkay | EHFA8 1E | 10320637      | R134A       | Medium    | 4.25 OZ                        |
|           | FMS      | 2     | 203  | Water Fountain        | Elkay | EHFA8 1E | 10320641      | R134A       | Medium    | 4.25 OZ                        |

| Color Code Index   |                   |
|--|-------------------|
|  | Totals            |
| Class 1  | 0                 |
| Class 2  | 0                 |
| Missing Code   | 0                 |
|  |                   |
| GWP Level* Index   |                   |
| High   | Greater than 2500 |
| Medium   | 150-2500          |
| Low  | Less than 150     |
| <small>*Values from Linde Gas and IPCC 4th Assessment Report, 2007. Global Warming Potential (GWP) based 100 year.</small> |                   |

Picatinny site maps for floor 1 and floor 2 are unavailable.



Picatinny FMS 1st Floor Water Fountain

Water Fountain Inventory

Date: 1/15/2019  
 Done By: Laurel Klein  
 Armory Name: Princeton  
 Armorer: Sam Delpidio

| Armory    | Location | Floor | Room | Equipment Description | Make | Model | Serial Number | Refrigerant | GWP Level | Amount of Refrigerant (lbs/oz) |
|-----------|----------|-------|------|-----------------------|------|-------|---------------|-------------|-----------|--------------------------------|
| Princeton | N/A      | N/A   | N/A  | N/A                   | N/A  | N/A   | N/A           | N/A         | N/A       | N/A                            |

| <i>Color Code Index</i>  |                   |
|--|-------------------|
|  | Totals            |
| Class 1  | 0                 |
| Class 2  | 0                 |
| Missing Code   | 0                 |
|  |                   |
| <i>GWP Level* Index</i>  |                   |
| High   | Greater than 2500 |
| Medium   | 150-2500          |
| Low  | Less than 150     |
| <small>*Values from Linde Gas and IPCC 4th Assessment Report, 2007. Global Warming Potential (GWP) based 100 year.</small> |                   |

No Photos Available

Water Fountain Inventory  
 Date: 1/15/2019  
 Done By: Laurel Klein  
 Armory Name: Riverdale  
 Armorer: Charles Rissmiller

| Site      | Location | Floor | Room | Equipment Description | Make          | Model    | Serial Number       | Refrigerant | GWP Level | Amount of Refrigerant (lbs/oz) |
|-----------|----------|-------|------|-----------------------|---------------|----------|---------------------|-------------|-----------|--------------------------------|
| Riverdale | ARMORY   | 1     | 100  | Water Fountain        | Elkay         | EZFS8 1B | 50724298            | R13         | High      | 4.1oz                          |
|           | ARMORY   | 2     | 200  | Water Fountain        | Halsey Taylor | 5W4A-3   | 0200615<br>61 F92 5 | R12         | High      | 5.5oz                          |

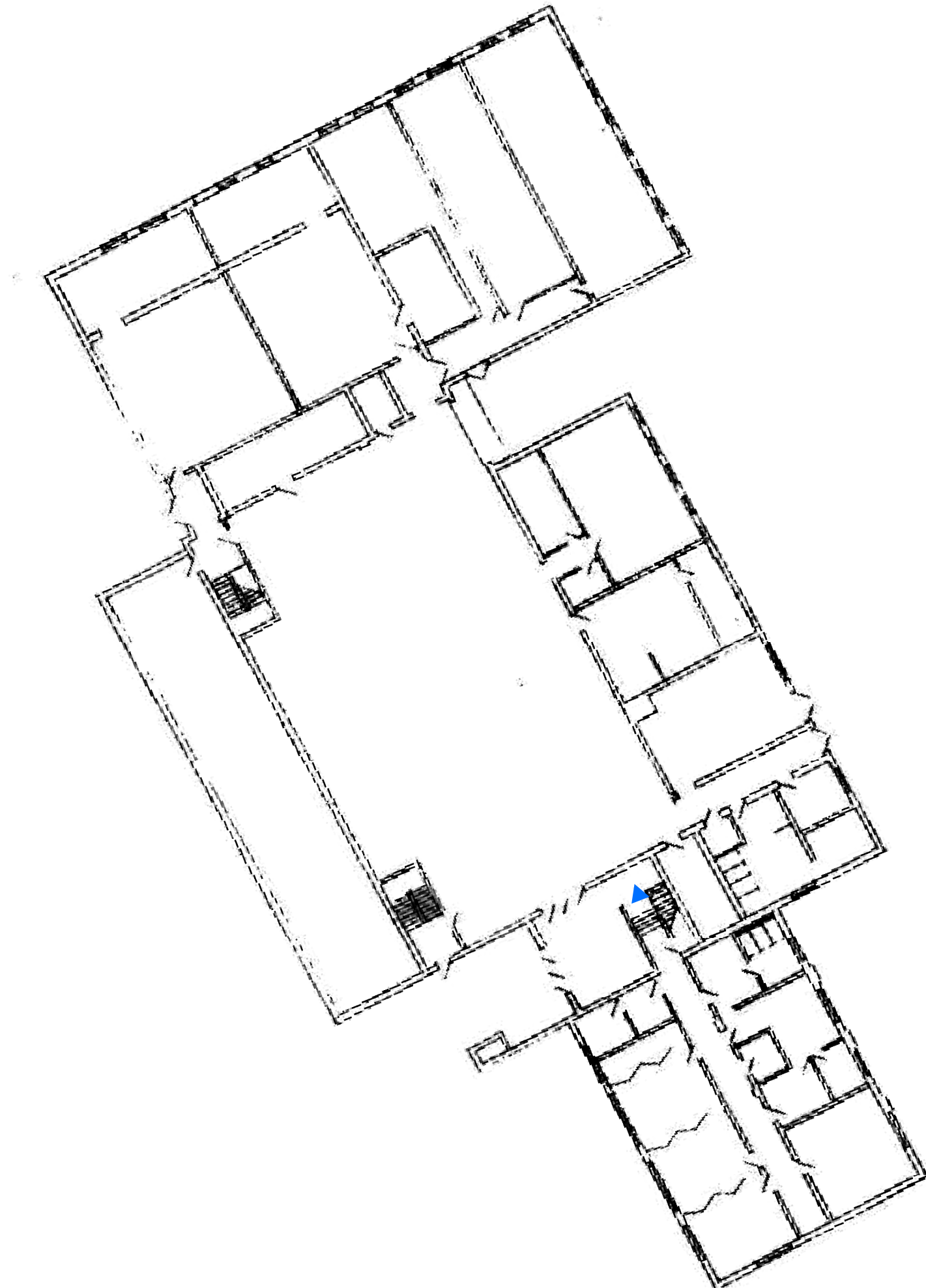
| Color Code Index |                   |
|------------------|-------------------|
|                  | Totals            |
| Class 1          | 2                 |
| Class 2          | 0                 |
| Missing Code     | 0                 |
|                  |                   |
| GWP Level* Index |                   |
| High             | Greater than 2500 |
| Medium           | 150-2500          |
| Low              | Less than 150     |

\*Values from Linde Gas and IPCC 4th Assessment Report, 2007. Global Warming Potential (GWP) based 100 year.



Riverdale Armory 1st Floor Water Fountain

# Figure RE1 Water Fountain Locations Riverdale Armory Floor 1



### Legend

▲ Water Fountain

0 12.5 25 50 Feet

1 inch = 25 feet



### Notes:

Floor plans georeferenced via headsup digitizing over 2015 aerial photography



Scale: 1 inch = 25 feet

File: Riverdale  
Floor 1

Date: 1/21/2019

Created By: Laurel Klein

Stockton  
University